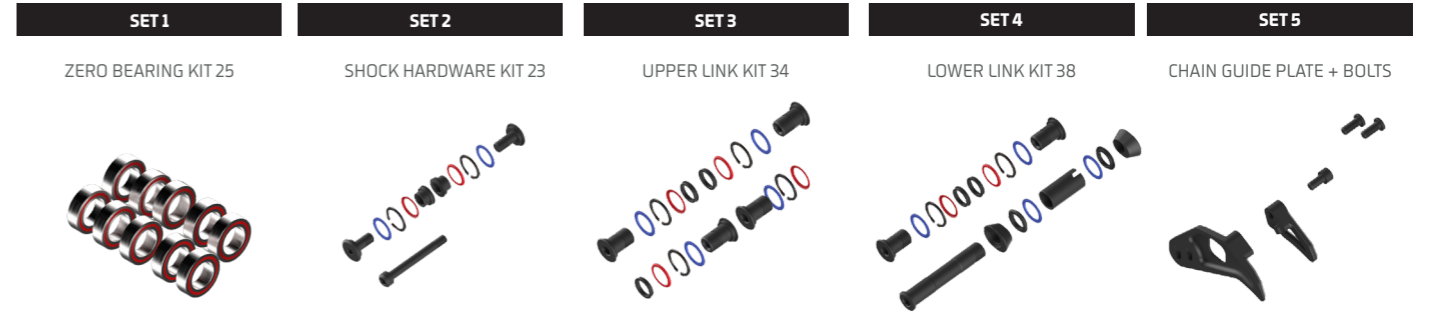
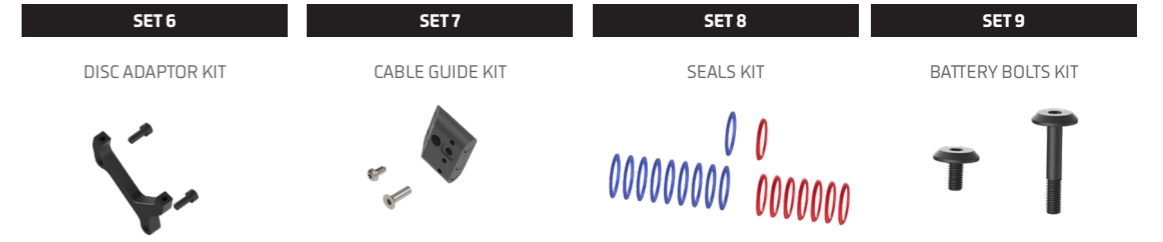
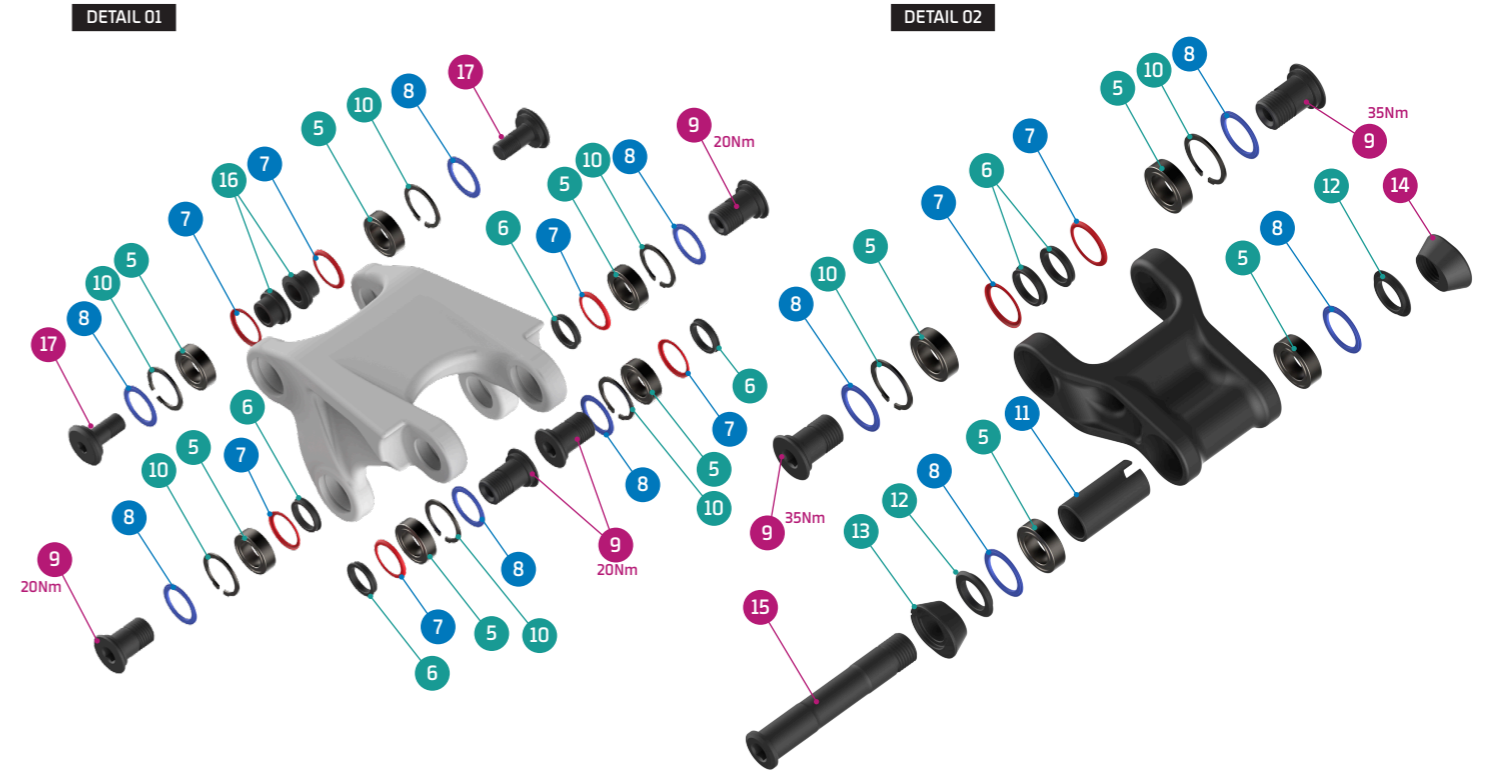
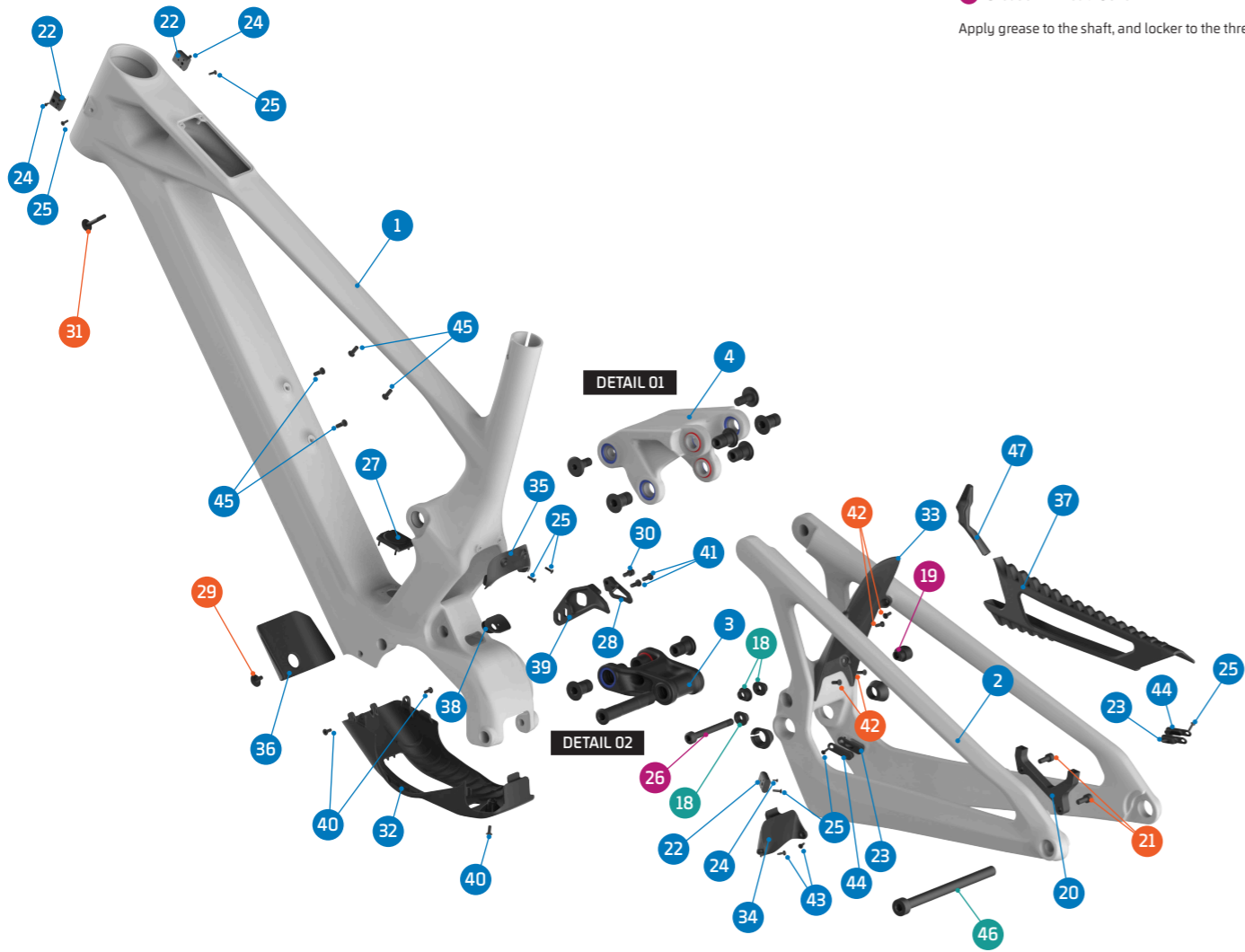




● Grease  
● Threadlocker  
● Grease + Threadlocker  
 Apply grease to the shaft, and locker to the threads



ITEM No.	DESCRIPTION	QTY.	PART NUMBER	TORQUE
1	FRAME	1		
2	REAR TRIANGLE	1		
3	LOWER LINK	1	099.26038	
4	UPPER LINK	1	Refer to B2B web for color options	
5	BEARING, 24x15x7 (3802-2RS)	10	SET 1 / 099.00113	
6	PIVOT WASHER	6	SET 3 & 4	
7	PIVOT SEAL, INTERNAL	8	SET 2, 3, 4 & 8	
8	PIVOT SEAL, EXTERNAL	10	SET 2, 3, 4 & 8	
9	PIVOT AXLE, M15	6	SET 3 & 4	35Nm / 20Nm
10	C-RING	8	SET 2, 3 & 4	
11	SPACER, 38L	1	SET 4	
12	SPACER, LOWER	2	SET 4	
13	PIVOT CHIP, LEFT	1	SET 4 & 099.26049	
14	PIVOT CHIP, RIGHT	1	SET 4 & 099.26050	
15	PIVOT AXLE, 81L	1	SET 4	17Nm
16	SPACER, 10x17x6	2	SET 2	
17	SHOCK BOLT	2	SET 2	8Nm
18	SHOCK FLIP CHIP LEFT	3	099.26044	
19	SHOCK FLIP CHIP RIGHT	1	099.26045	
20	DISC MOUNT	1	SET 6	
21	SCREW BOLT, M6x15	2	SET 6	12Nm
22	CABLE GUIDE	3	SET 7	
23	CABLE GUIDE	2	099.26046	
24	SCREW BOLT, M2,5x5	3	SET 7	1Nm

ITEM No.	DESCRIPTION	QTY.	PART NUMBER	TORQUE
25	SCREW BOLT, M3x10	7	SET 7 & 099.20068	1Nm
26	SHOCK BOLT, 70L	1	SET 2 & 099.26051	10Nm
27	CHARGE PORT COVER	1	099.26052	
28	CHAIN GUIDE OUTER	1	SET 5	
29	SCREW BOLT, M5x10	1	SET 9	5Nm
30	SCREW BOLT, M5x8	1	SET 5	2Nm
31	SCREW BOLT, M5x30	1	SET 9	5Nm
32	MOTOR COVER	1	099.26054	
33	TYRE FENDER	1	099.26055	
34	YOKE FENDER	1	099.26056	
35	FRONT FENDER	1	099.26057	
36	DOWN TUBE PROTECTOR	1	099.20058	
37	CHAINSTAY PROTECTOR	1	099.26059	
38	RUBBER CABLE PROTECTOR	1	099.26060	
39	CHAIN GUIDE BASE PLATE	1	SET 5	
40	SCREW BOLT, M4x10	3	099.26061	2Nm
41	SCREW BOLT, M5x12	2	SET 5	1,5Nm
42	SCREW BOLT, M4x10	4	099.20078	1Nm
43	SCREW BOLT, M3x10	2	099.26063	1Nm
44	CABLE GUIDE, COVER	2	099.26047	
45	SCREW BOLT, M5x8	4		1Nm
46	REAR AXLE	1	112.90027	
47	CHAINSTAY YOKE PROTECTOR	1	099.26109	

PART NUMBER	DESCRIPTION	COMPONENTS
099.22100	SET 1: ZERO BEARING KIT 25	BEARING 3802-2RS, 24x15x7 (x10)
099.26201	SET 2: SHOCK HARDWARE KIT 23	PIVOT SEAL INTERNAL (x2) / PIVOT SEAL EXTERNAL (x2) / C-RING (x2) / SPACER, 10x17x6 (x2) / SHOCK BOLT (x2) / SHOCK BOLT, 70 (x1)
099.26300	SET 3: UPPER LINK KIT 34	PIVOT WASHER (x4) / PIVOT SEAL INTERNAL (x4) / PIVOT SEAL EXTERNAL (x4) / PIVOT AXLE, M15 (x4) / C-RING (x4)
099.26400	SET 4: LOWER LINK KIT 38	PIVOT WASHER (x2) / PIVOT SEAL INTERNAL (x2) / PIVOT SEAL EXTERNAL (x4) / PIVOT AXLE, M15 (x2) / C-RING (x2) / SCPACER, 38 (x1) / SCPACER LOWER (x1) / PIVOT CHIP LEFT (x1) / PIVOT CHIP RIGHT (x1) / PIVOT AXLE, 81 (x1)
099.26064	SET 5: CHAIN GUIDE PLATE + BOLTS	CHAIN GUIDE BASE (x1) / CHAIN GUIDE OUTER PLATE (x1) / SCREW BOLT, M5x12 (x2) / SCREW BOLT, M5x10 (x1)
099.25018	SET 6: DISC ADAPTOR KIT	DISC ADAPTOR (x1) / SCREW BOLT (x2)
099.26048	SET 7: CABLE GUIDE KIT	CABLE GUIDE (x1) / SCREW BOLT, M2,5X5L (x1) / SCREW BOLT M3X10L (x1)
099.26062	SET 8: SEALS KIT	PIVOT SEAL INTERNAL (x8) / PIVOT SEAL EXTERNAL (x10)
099.26053	SET 9: BATTERY BOLTS KIT	SCREW BOLT, M5x10 (x1) / SCREW BOLT, M5x30 (x1)