



MANUALS & DOCUMENTS

ANARK

ANARK

EN	3
MANUALS & DOCUMENTS	
DE	15
ANLEITUNGEN UND DOKUMENTE	
FR	27
MANUELS ET DOCUMENTS	
IT	39
MANUALI E DOCUMENTI	
ES	51
MANUALES Y DOCUMENTOS	

MANUALS & DOCUMENTS





GENERAL AND SAFETY INSTRUCTIONS

This technical guide may use the following 3 icons. Each icon denotes that the following precautions should be taken:

WARNING:

Improper use or failure to follow directions may result in serious injury or death. These tasks are technically difficult and, if not performed properly, could cause damage to your bicycle or void your warranty.

CAUTION:

Improper use or failure to follow directions may result in minor injuries. These tasks are technically difficult and, if not performed properly, could cause damage to your bicycle or void your warranty.

INFORMATION

Essential information to correctly perform this task in order to avoid any damage to the bicycle or void the warranty, without any risk to people.

FURTHER CONSIDERATIONS

- Using non-original spare parts can lead to damage, malfunctions and accidents with potentially serious consequences.
- Some of the steps described in this manual require skills beyond those of the average bicycle user. If you are unable to follow any of these steps, please arrange for your bicycle to be serviced and replaced at an authorized Mondraker service centre. Installing spare parts incorrectly may result in malfunctions, accidents, injuries and void the warranty.

CLEANING AND MAINTENANCE

- Once the parts have been disassembled, components to be reused should be cleaned, greased and thread sealed (if necessary).

SYMBOL LEGEND



Medium grade threadlocker. Loctite 243.



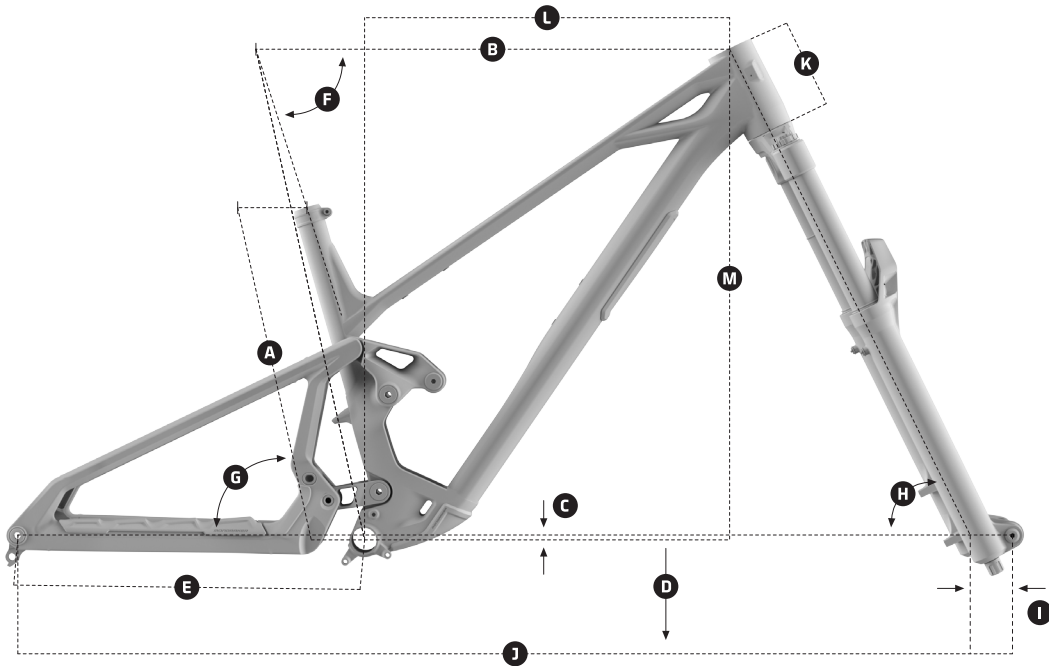
Quality synthetic assembly grease.



Special carbon friction grease.



1. DIMENSIONS



ANARK

FRAME SIZE	S [STD / LOW]	M [STD / LOW]	ML [STD / LOW]	L [STD / LOW]	XL [STD / LOW]
A Seat Tube Length	380 mm	410 mm	435 mm	460 mm	490 mm
B Top Tube Length	583 mm / 584 mm	603 mm / 604 mm	625 mm / 626 mm	647 mm / 648 mm	669 mm / 670 mm
C Bottom Bracket Drop	-10 mm / -15 mm	-10 mm / -15 mm	-10 mm / -15 mm	-10 mm / -15 mm	-10 mm / -15 mm
D Bottom Bracket Height	346 mm / 341 mm	346 mm / 341 mm	346 mm / 341 mm	346 mm / 341 mm	346 mm / 341 mm
E Chainstay Length	445 mm / 446 mm	445 mm / 446 mm	445 mm / 446 mm	445 mm / 446 mm	445 mm / 446 mm
F Seat Tube Angle, Actual	74.00° / 73.65°	74.00° / 73.65°	74.00° / 73.65°	74.00° / 73.65°	74.00° / 73.65°
G Seat Tube Angle, Effective	77.50° / 77.15°	77.50° / 77.15°	77.50° / 77.15°	77.50° / 77.15°	77.50° / 77.15°
H Headtube Angle	63.50° / 63.15°	63.50° / 63.15°	63.50° / 63.15°	63.50° / 63.15°	63.50° / 63.15°
I Fork Offset	44 mm / 44 mm	44 mm / 44 mm	44 mm / 44 mm	44 mm / 44 mm	44 mm / 44 mm
J Wheelbase	1241 mm	1261 mm	1285 mm	1310 mm	1334 mm
K Headtube Length	110 mm	110 mm	110 mm	110 mm	110 mm
L Reach	440 mm / 436 mm	460 mm / 456 mm	480 mm / 476 mm	500 mm / 496 mm	520 mm / 516 mm
M Stack	644 mm / 647 mm	644 mm / 647 mm	653 mm / 656 mm	662 mm / 665 mm	671 mm / 674 mm

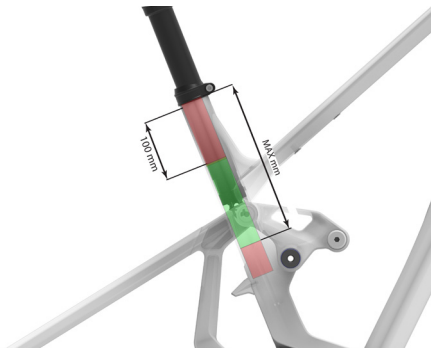
SHOCK FLIP CHIP ADJUST +/-5mm BB height, 0,35° angles



2. FRAME TECHNICAL SPECIFICATIONS

FRAME SIZES	S / M / ML / L / XL
FRONT WHEEL SIZE	29"
FRONT AXLE	110 mm x 15 mm (BOOST)
REAR WHEEL SIZE	27,5"
REAR AXLE	148 mm x 12 mm
REAR SHAFT	REAR AXLE, 12x148 P1.0 L180
BOTTOM BRACKET	BSA 73 mm
REAR WHEEL TRAVEL	170 mm
REAR SHOCK	205 x 65 mm TRUNNION, 30 x 8 mm
FRONT WHEEL TRAVEL	180 mm
SEATPOST/SEAT CLAMP DIAMETER	31.6 mm / 36.9 mm
CHAIN LINE	55 mm
HEADSET	Onoff custom ZS56/ZS56, 1-1/8", 1.2"
MAXIMUM CHAINRING SIZE	32T
REAR BRAKE	POST MOUNT CUSTOM ADAPTER, DIRECT 200
MAXIMUM COMPATIBLE WHEEL SIZE	27'5 x 2.5

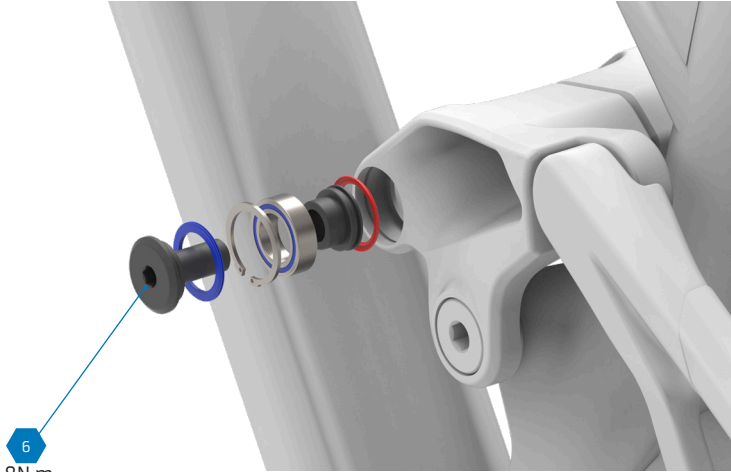
3. SEATPOST INSERTION DEPTH





FRAME SIZE	MIN. (mm)	MAX. (mm)
XL	100	190
L	100	210
ML	100	230
M	100	260
S	100	280

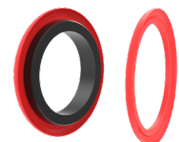
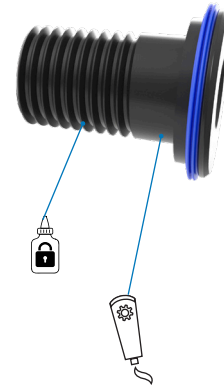
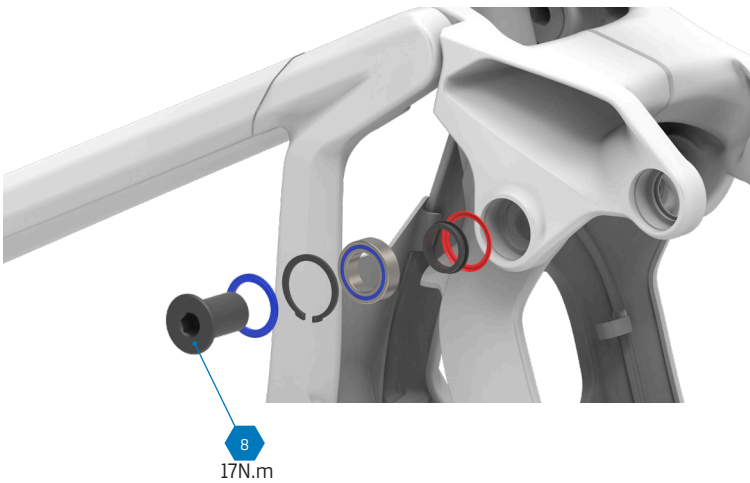


4. UPPER LINK

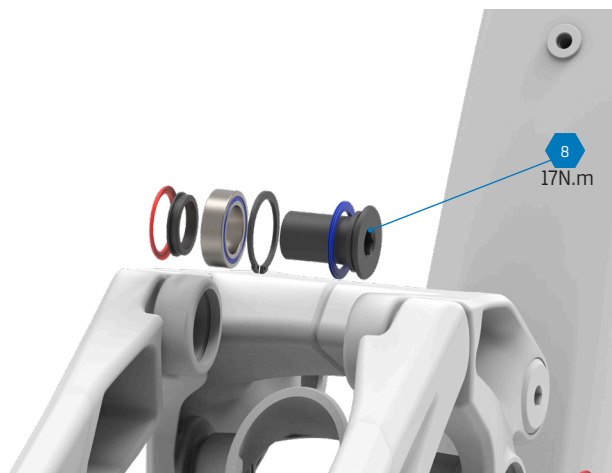


 Use Loctite 243 on the threads.
Pro Tip: Instead of applying the threadlocker to the bolt, you can apply it directly to the internal thread of the bicycle frame. This prevents contaminating other components with threadlocker when inserting the bolt.

 Use assembly grease to assemble the components.

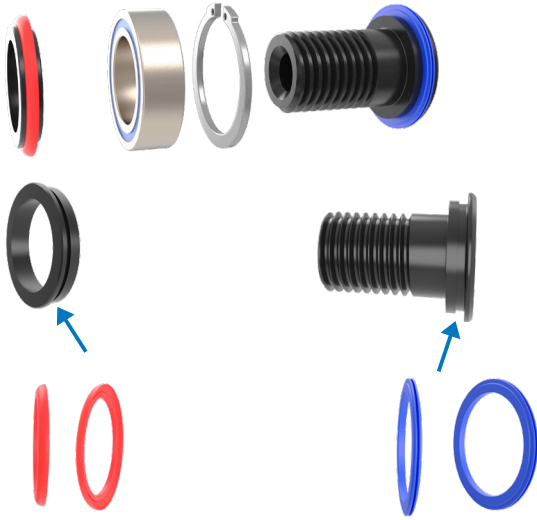


More information: See section "8. RUBBER SEALS" in this guide.



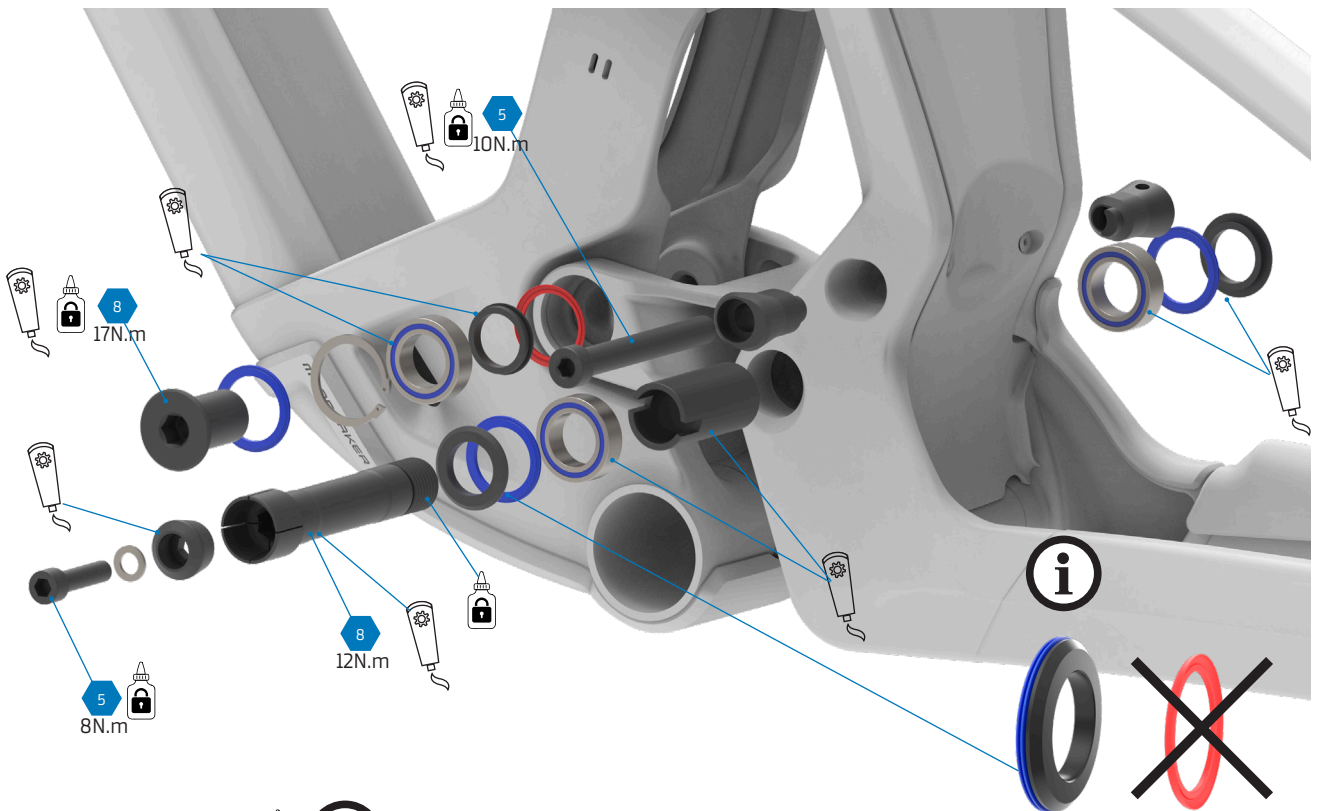


5. RUBBER SEALS





Pay attention to the position and shape of the rubber seals. Colours red and blue are used for illustration purposes, but the actual rubber seals are black.

6. LOWER LINK

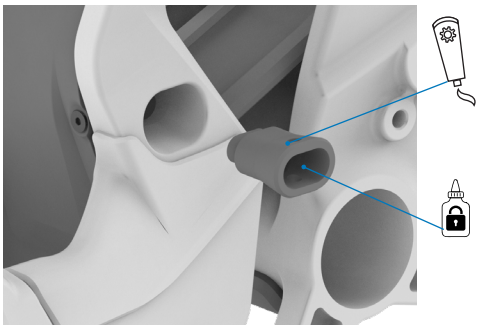
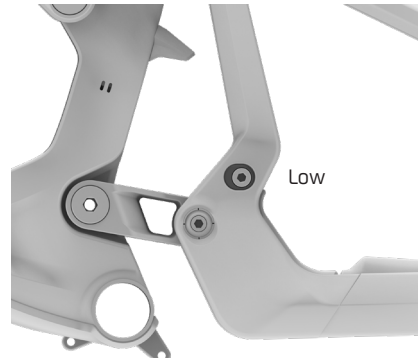
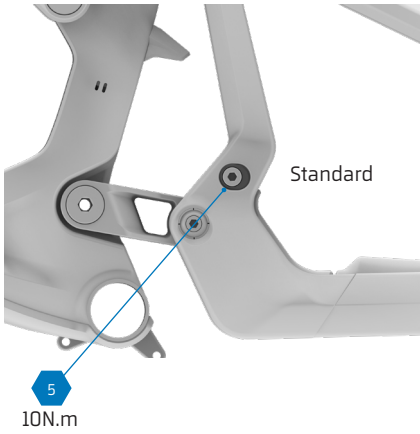


  Use Loctite 243 on the threads.

  Use assembly grease to assemble the components.

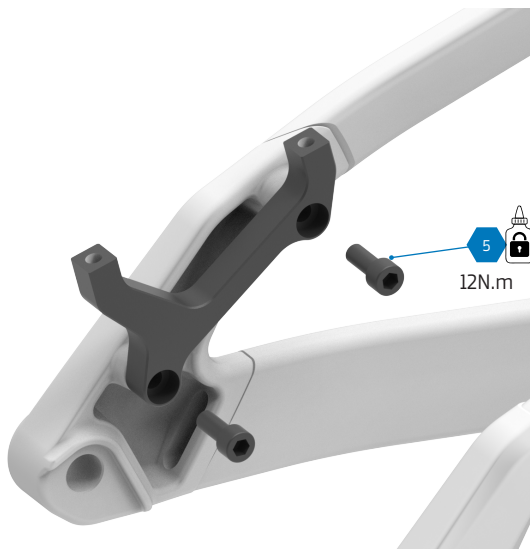


7. SHOCK MOUNT FLIP CHIP



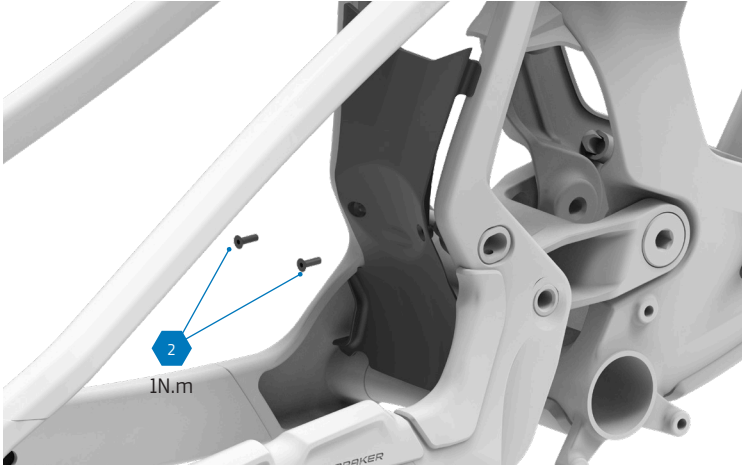
Use Loctite 243 on the threads, and assembly grease on the outer surfaces of the flip chip.

8. BRAKE MOUNT ADAPTER

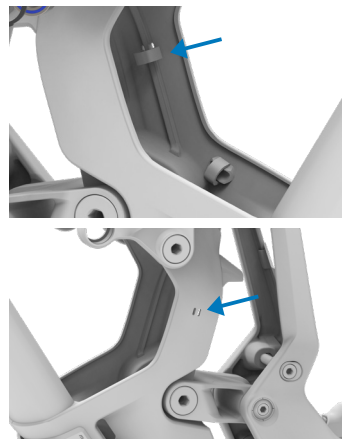
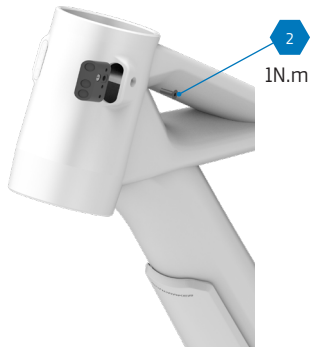




9. FENDERS

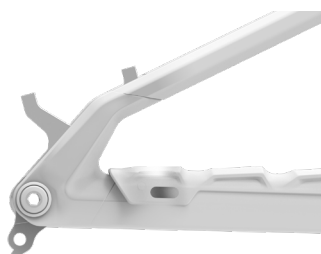


10. INTERNAL CABLE ROUTING



The frame features openings to pass a zip tie through and secure the dropper post cable.

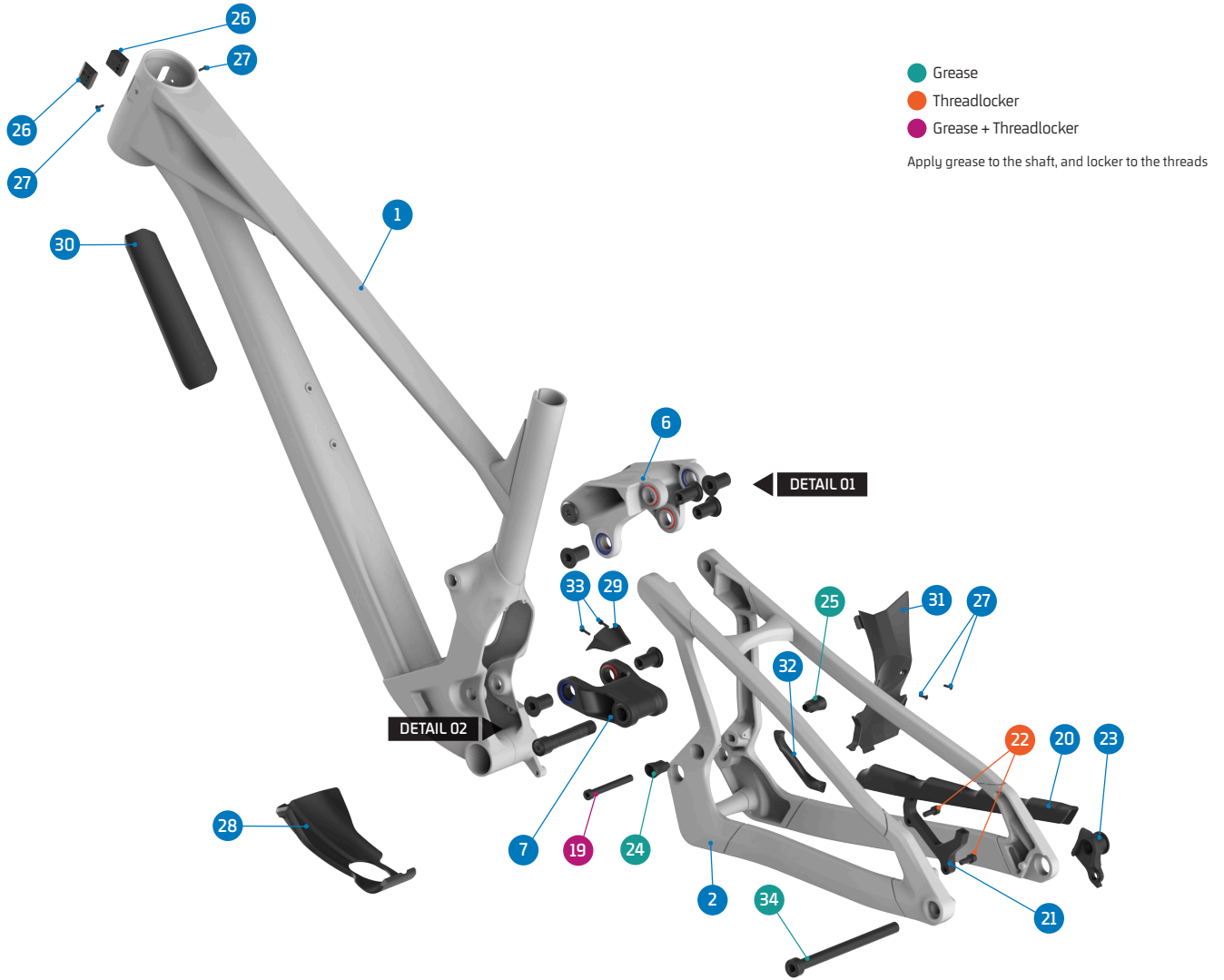
11. SHIFT CABLE



Behind the chainstay protector is the cable entry for the rear derailleurs. The rubber of the protector can be pierced at the mark to route the cable.



12. SPARE PARTS



● Grease
● Threadlocker
● Grease + Threadlocker
 Apply grease to the shaft, and locker to the threads

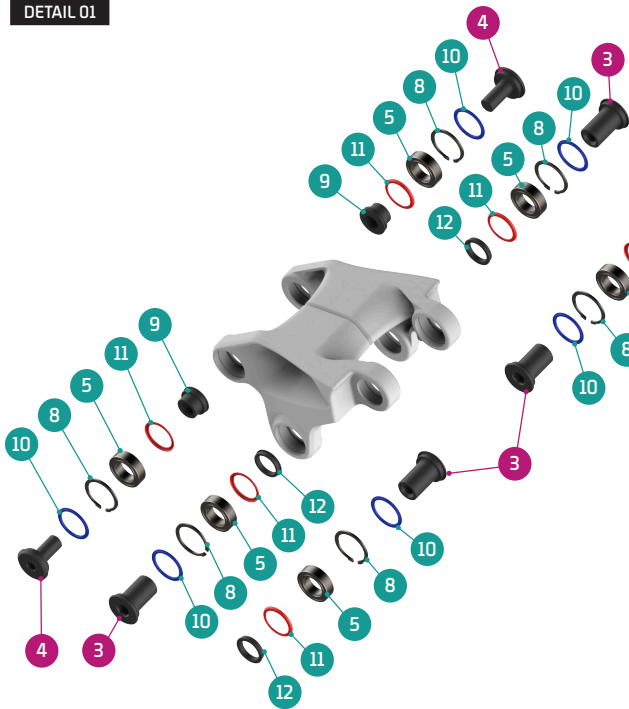
ITEM No.	DESCRIPTION	QTY.	PART NUMBER	TORQUE
1	FRAME	1		
2	REAR TRIANGLE	1		
3	PIVOT AXLE, M15	6	SET 3 & 4	17Nm
4	SHOCK BOLT	2	SET 2	8Nm
5	BEARING, 24x15x7	10	SET 1 / 099.00113	
6	UPPER LINK	1	Refer to B2B web for color options	
7	LOWER LINK	1	099.26092	
8	C-RING	8	SET 2, 3 & 4	
9	SPACER, 10x17x6	2	SET 2	12Nm
10	PIVOT SEAL EXTERNAL	10	SET 2, 3, 4 & 7	
11	PIVOT SEAL INTERNAL	8	SET 2, 3, 4 & 7	
12	PIVOT WASHER	6	SET 3 & 4	
13	PIVOT AXLE, 86L	1	SET 4	8Nm
14	SPACER, 38L	1	SET 4	
15	WASHER, 6x10x1	1	SET 4	10Nm
16	TAPER NUT	1	SET 4	
17	SCREW BOLT, M6x25	1	SET 4	

ITEM No.	DESCRIPTION	QTY.	PART NUMBER	TORQUE
18	SPACER, LOWER	2	SET 4	12Nm
19	SHOCK BOLT, 65L	1	SET 2/099.25038	
20	CHAINSTAY PROTECTOR	1	099.25016	
21	DISC MOUNT	1	SET 5	
22	SCREW BOLT, M6x15	2	SET 5	1Nm
23	HANGER	1	SRAM UDH	
24	SHOCK FLIPCHIP LEFT	1	099.26093	
25	SHOCK FLIPCHIP RIGHT	1	099.26094	
26	CABLE GUIDE HEAD SET 3 CABLES	2	SET 6	2Nm
27	SCREW BOLT, M3x10	4	SET 6	
28	BOTTOM BRACKET PROTECTOR	1	099.26095	
29	FT SHOCK FENDER	1	099.26096	
30	DOWN TUBE PROTECTOR	1	099.26080	
31	REAR TRIANGLE FENDER	1	099.26097	
32	YOKE PROTECTOR	1	099.26098	
33	SCREW BOLT, M3x10	2	099.12116	
34	REAR AXLE	1	112.90027	

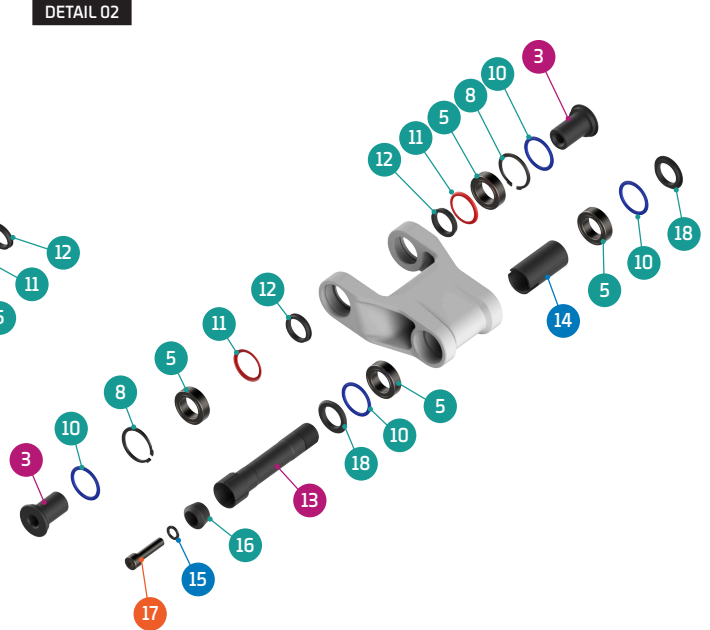


12. SPARE PARTS

DETAIL 01

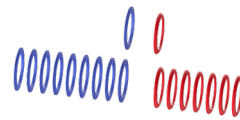


DETAIL 02



SET 7

SEALS KIT



SET 6

CABLE GUIDE KIT



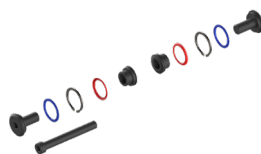
SET 1

ZERO BEARING KIT 25



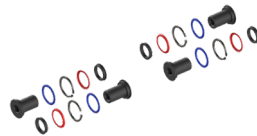
SET 2

SHOCK HARDWARE KIT 24



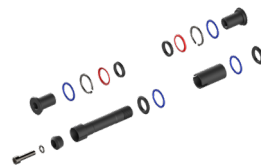
SET 3

UPPER LINK KIT 34



SET 4

LOWER LINK KIT 40



SET 5

DISC ADAPTOR KIT



PART NUMBER	DESCRIPTION	COMPONENTS
099.22100	SET 1: ZERO BEARING KIT 25	BEARING 3802-2RS, 24x15x7 (x10)
099.26202	SET 2: SHOCK HARDWARE KIT 24	PIVOT SEAL INTERNAL (x2) / PIVOT SEAL EXTERNAL (x2) / C-RING (x2) / SPACER, 10x17x6 (x2) / SHOCK BOLT (x2) / SHOCK BOLT, 65 (x1)
099.26300	SET 3: UPPER LINK KIT 34	PIVOT WASHER (x4) / PIVOT SEAL INTERNAL (x4) / PIVOT SEAL EXTERNAL (x4) / PIVOT AXLE, M15 (x4) / C-RING (x4)
099.26402	SET 4: LOWER LINK KIT 40	PIVOT WASHER (x2) / PIVOT SEAL INTERNAL (x2) / PIVOT SEAL EXTERNAL (x4) / PIVOT AXLE, M15 (x2) / C-RING (x2) / SCPACER, 38 (x1) / SCPACER LOWER (x1) / PIVOT AXLE, 86 (x1) / WASHER, 6x10x1 (x1) / TUPPER NUT (x1) / SCREW BOLT, M6x25 (x2)
099.25018	SET 5: DISC ADAPTOR KIT	DISC ADAPTOR (x1) / SCREW BOLT, M6x15 (x2)
099.25013	SET 6: CABLE GUIDE KIT	CABLE GUIDE, 3 CABLES (x1) / SCREW BOTL M2.5X5 (x1) / SCREW BOLT M3X10 (x1)
099.26062	SET 7: SEALS KIT	PIVOT SEAL INTERNAL (x8) / PIVOT SEAL EXTERNAL (x10)



13. KINEMATICS

The Anark's kinematics are derived from the Summum racing prototype platform. This allows us to equip it with a highly efficient suspension system, whose foundation was developed and optimized using telemetry in the demanding racing environment.

Anark leverage ratio shows a 25% progression rate with a 205x65mm rear shock, ideal for the application with coil spring rear shocks.

Anark Anti-squat at sag sits at sag is around 98%, ideal number for its longer travel, capable, plush and efficient rear suspension.

Anark Anti-rise at sag is around 99,7% , close to 100% for the most ideal and the most independent action of the rear brake with rear suspension performance.

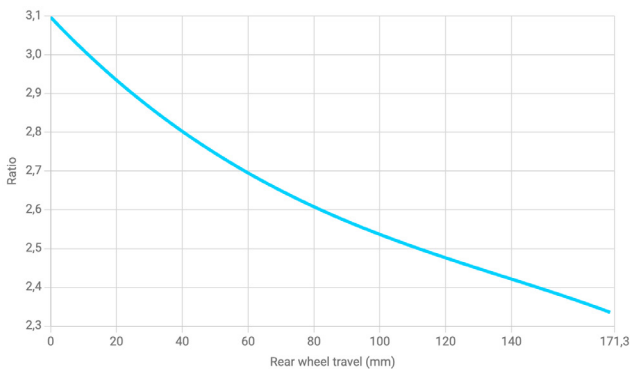
Recommended springs for the rear shock:

RockShox
S 350 lb/in, M 400 lb/in, ML 450 lb/in, L 500 lb/in and XL 500 lb/in

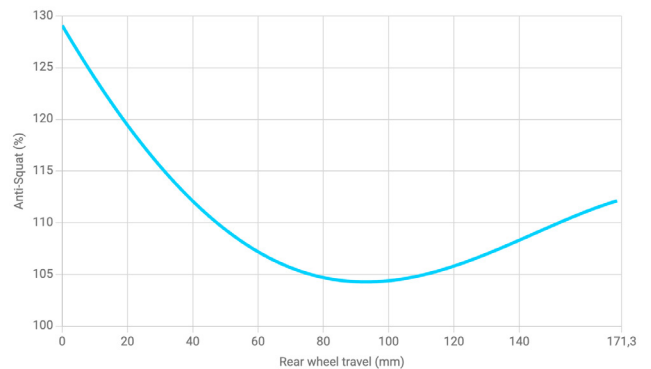
Fox
S 350 lb/in, M 400 lb/in, ML 450 lb/in, L 500 lb/in and XL 500 lb/in

Öhlins
S 343 lb/in, M 411 lb/in, ML 457 lb/in, L 502 lb/in and XL 502 lb/in

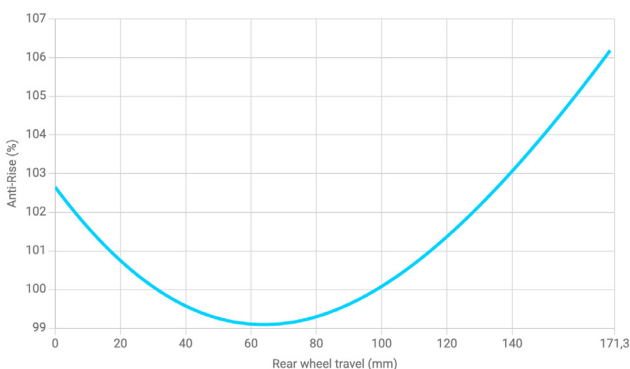
ANARK **LEVERAGE RATIO**



ANARK **ANTI-SQUAT**



ANARK **ANTI-RISE**





All information and pictures on this document is provided for information purposes only and does not constitute a legal contract between Mondraker and any person or entity. Specifications, geometries or any other technical information published is subject to change without prior notice.

© © All trademarks and models are property of Blue Factory Team, S.L.U. and are protected by current laws and applicable international agreements.

ANLEITUNGEN UND DOKUMENTE





SICHERHEITS- UND ALLGEMEINE HINWEISE

Bitte beachten Sie, dass in diesem technischen Leitfaden die folgenden drei Symbole erscheinen können. Sie weisen jeweils auf die folgenden Vorsichtsmaßnahmen hin:

WARNUNG:

Die Nichtbeachtung dieser Hinweise oder die Durchführung unsicherer Praktiken kann zu schweren Verletzungen oder sogar zum Tod führen. Die Arbeiten sind technisch anspruchsvoll und können bei fehlerhafter Ausführung zu Schäden am Fahrrad oder zum Erlöschen der Garantie führen.

VORSICHT:

Die Nichtbeachtung dieser Hinweise oder die Durchführung unsicherer Praktiken kann zu leichten Verletzungen führen. Die Arbeiten sind technisch anspruchsvoll und können bei fehlerhafter Ausführung zu Schäden am Fahrrad oder zum Erlöschen der Garantie führen.

INFORMATION

Informationen, die für eine ordnungsgemäße Ausführung der Arbeit wichtig sind und daher mögliche Schäden an Ihrem Fahrrad oder den Verlust der Garantie verhindern. Hier besteht jedoch kein Risiko für Personen.

WICHTIGE HINWEISE

- Die Verwendung von nicht originalen Ersatzteilen kann zu Schäden, Fehlfunktionen und Unfällen mit schweren Folgen führen.
- Bitte beachten Sie, dass für einige der in diesem Handbuch beschriebenen Arbeitsschritte Kenntnisse erforderlich sind, die über die Kompetenz eines durchschnittlichen Fahrradfahrers hinausgehen. Falls Sie nicht qualifiziert sind, diese Schritte auszuführen, bringen Sie Ihr Fahrrad zur Wartung und zum Austauschen von Bauteilen zu einem von Mondraker autorisierten technischen Kundendienst. Der falsche Einbau von Ersatzteilen kann zu Fehlfunktionen, Unfällen, Verletzungen und zum Erlöschen der Garantie führen.

REINIGUNG UND PFLEGE

- Nach einem Ausbau der Teile wird empfohlen, die wiederzuverwendenden Komponenten zu reinigen, zu fetten und (falls erforderlich) mit Schraubensicherung zu versehen.

SYMBOL-LEGENDE



Mittelfeste Schraubensicherung. Loctite 243.

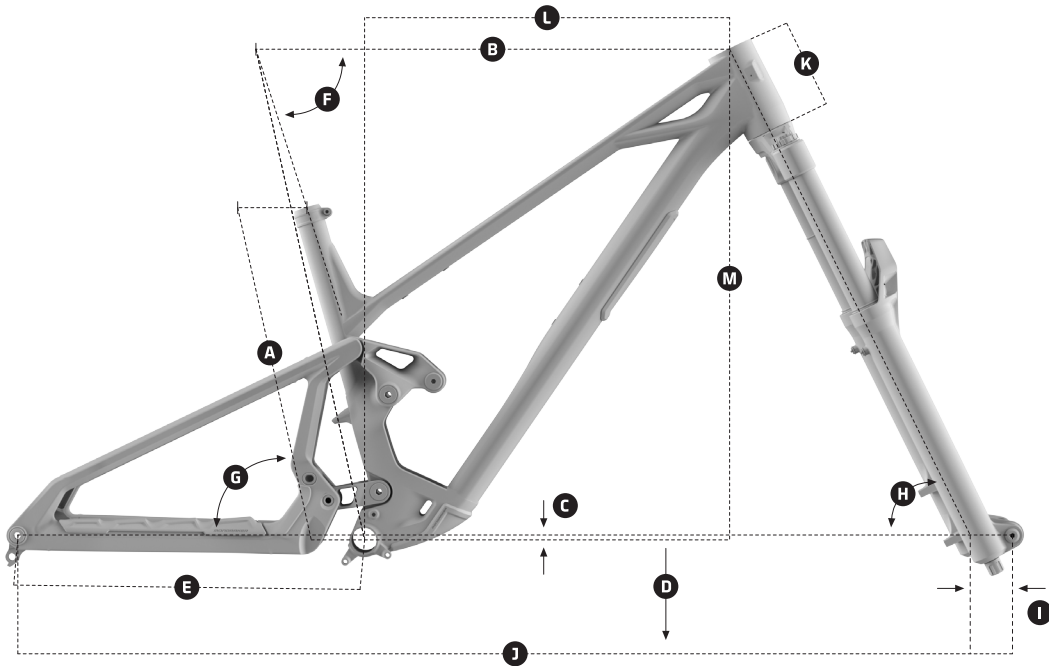


Synthetische Montagepaste.



Spezielle Carbon Montagepaste.

1. GEOMETRIE



ANARK

RAHMENHÖHE	S [STD / LOW]	M [STD / LOW]	ML [STD / LOW]	L [STD / LOW]	XL [STD / LOW]
A Sitzrohlänge	380 mm	410 mm	435 mm	460 mm	490 mm
B Oberrohrlänge	583 mm / 584 mm	603 mm / 604 mm	625 mm / 626 mm	647 mm / 648 mm	669 mm / 670 mm
C Innenlagerabsenkung	-10 mm / -15 mm	-10 mm / -15 mm	-10 mm / -15 mm	-10 mm / -15 mm	-10 mm / -15 mm
D Innenlagerhöhe	346 mm / 341 mm	346 mm / 341 mm	346 mm / 341 mm	346 mm / 341 mm	346 mm / 341 mm
E Kettenstrebenlänge	445 mm / 446 mm	445 mm / 446 mm	445 mm / 446 mm	445 mm / 446 mm	445 mm / 446 mm
F Sitzwinkel	74.00° / 73.65°	74.00° / 73.65°	74.00° / 73.65°	74.00° / 73.65°	74.00° / 73.65°
G Sitzwinkel (effektiv)	77.50° / 77.15°	77.50° / 77.15°	77.50° / 77.15°	77.50° / 77.15°	77.50° / 77.15°
H Lenkwinkel	63.50° / 63.15°	63.50° / 63.15°	63.50° / 63.15°	63.50° / 63.15°	63.50° / 63.15°
I Gabel Offset	44 mm / 44 mm	44 mm / 44 mm	44 mm / 44 mm	44 mm / 44 mm	44 mm / 44 mm
J Radstand	1241 mm	1261 mm	1285 mm	1310 mm	1334 mm
K Steuerrohrlänge	110 mm	110 mm	110 mm	110 mm	110 mm
L Reach	440 mm / 436 mm	460 mm / 456 mm	480 mm / 476 mm	500 mm / 496 mm	520 mm / 516 mm
M Stack	644 mm / 647 mm	644 mm / 647 mm	653 mm / 656 mm	662 mm / 665 mm	671 mm / 674 mm

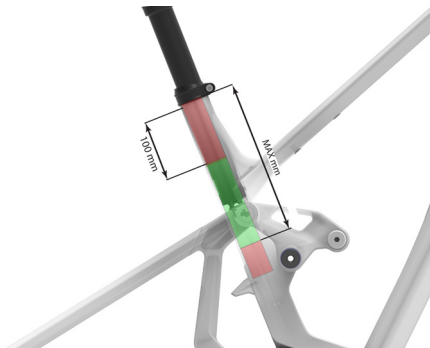
DÄMPFER FLIP-CHIP VERSTELLUNG +/-5mm Tretlagerhöhe, 0,35° Winkel



2. RAHMENSPEZIFIKATIONEN

RAHMENGRÖSSEN	S / M / ML / L / XL
VORDERRADGRÖSSE	29"
NABE VORN	110 mm x 15 mm (BOOST)
HINTERRADGRÖSSE	27,5"
NABE HINTEN	148 mm x 12 mm
HINTERACHSE	REAR AXLE, 12x148 P1.0 L180
INNENLAGER	BSA 73 mm
FEDERWEG	170 mm
SCHOCKABSORBER	205 x 65 mm TRUNNION, 30 x 8 mm
FEDERGABEL	180 mm
DURCHMESSER SATTELSTÜTZE	31.6 mm / 36.9 mm
KETTENLINIE	55 mm
STEUERSTAZ	Onoff custom ZS56/ZS56, 1-1/8", 1.2"
KETTENBLATT MAX	32T
BREMSE HINTEN	POST MOUNT CUSTOM ADAPTER, DIRECT 200
MAXIMAL KOMPATIBLE REIFENGRÖSSE	27'5 x 2.5

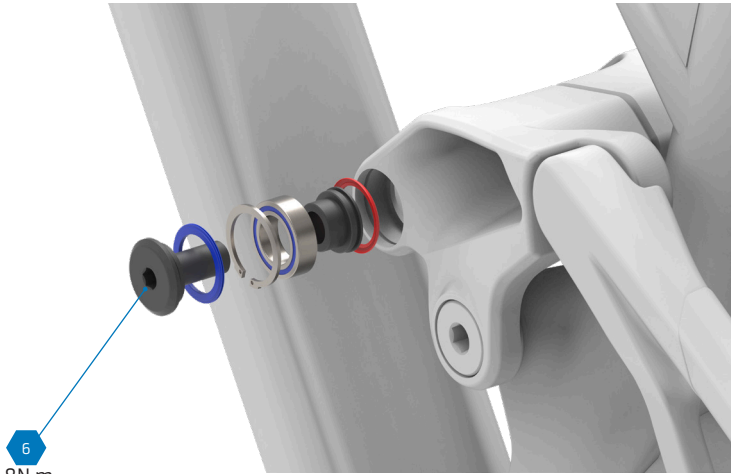
3. EINSTECKTIEFE DER SATTELSTÜTZE





RAHMENGRÖSSE	MIN. (mm)	MAX. (mm)
XL	100	190
L	100	210
ML	100	230
M	100	260
S	100	280

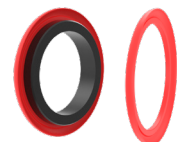
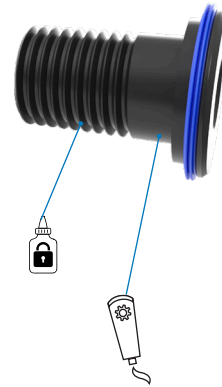
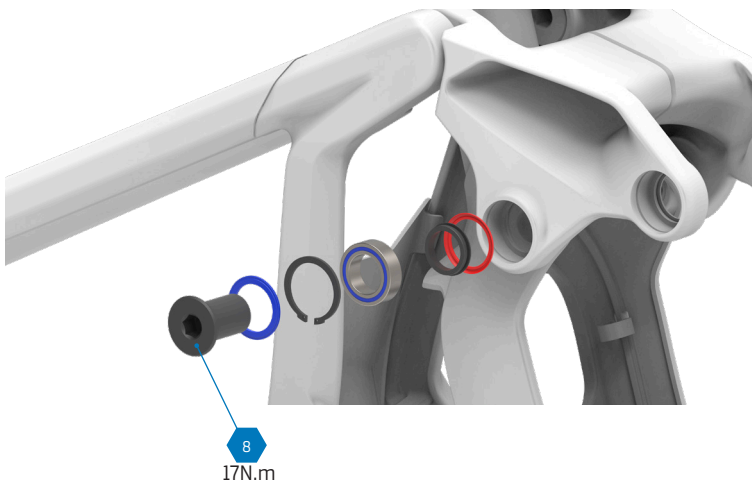


4. OBERER UMLENKHEBEL

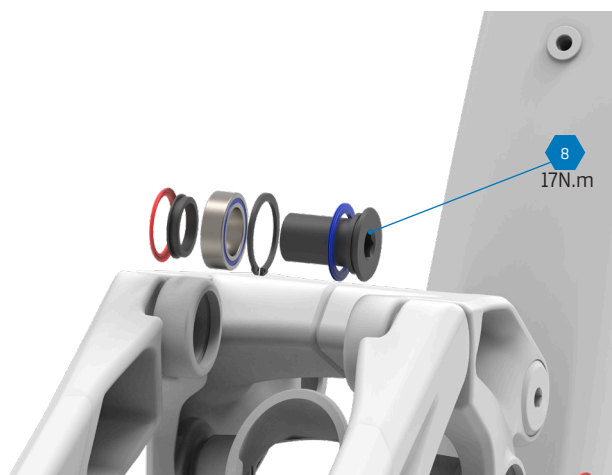


 Verwenden Sie Loctite 243 für das Gewinde.
Pro-Tipp: Anstatt die Schraubensicherung auf die Schraube aufzutragen, können Sie diese auch direkt in das Innengewinde des Fahrradrahmens geben. So vermeiden Sie, dass andere Komponenten beim Einsetzen der Schraube mit der Schraubensicherung verunreinigt werden.

 Verwenden Sie Montagefett für den Zusammenbau der Komponenten.

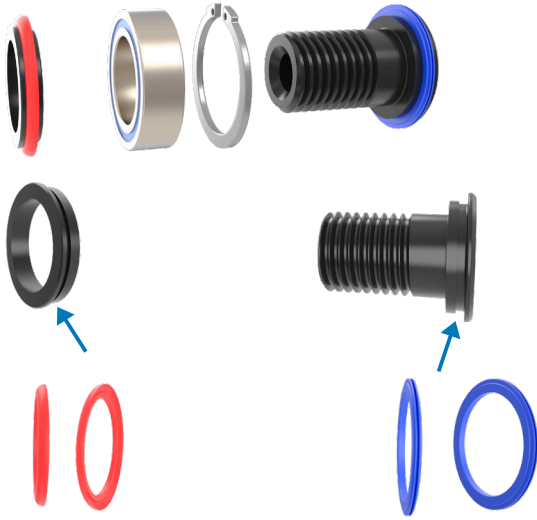


Weitere Informationen: Siehe Abschnitt „8. GUMMIDICHTUNGEN“ in dieser Anleitung.



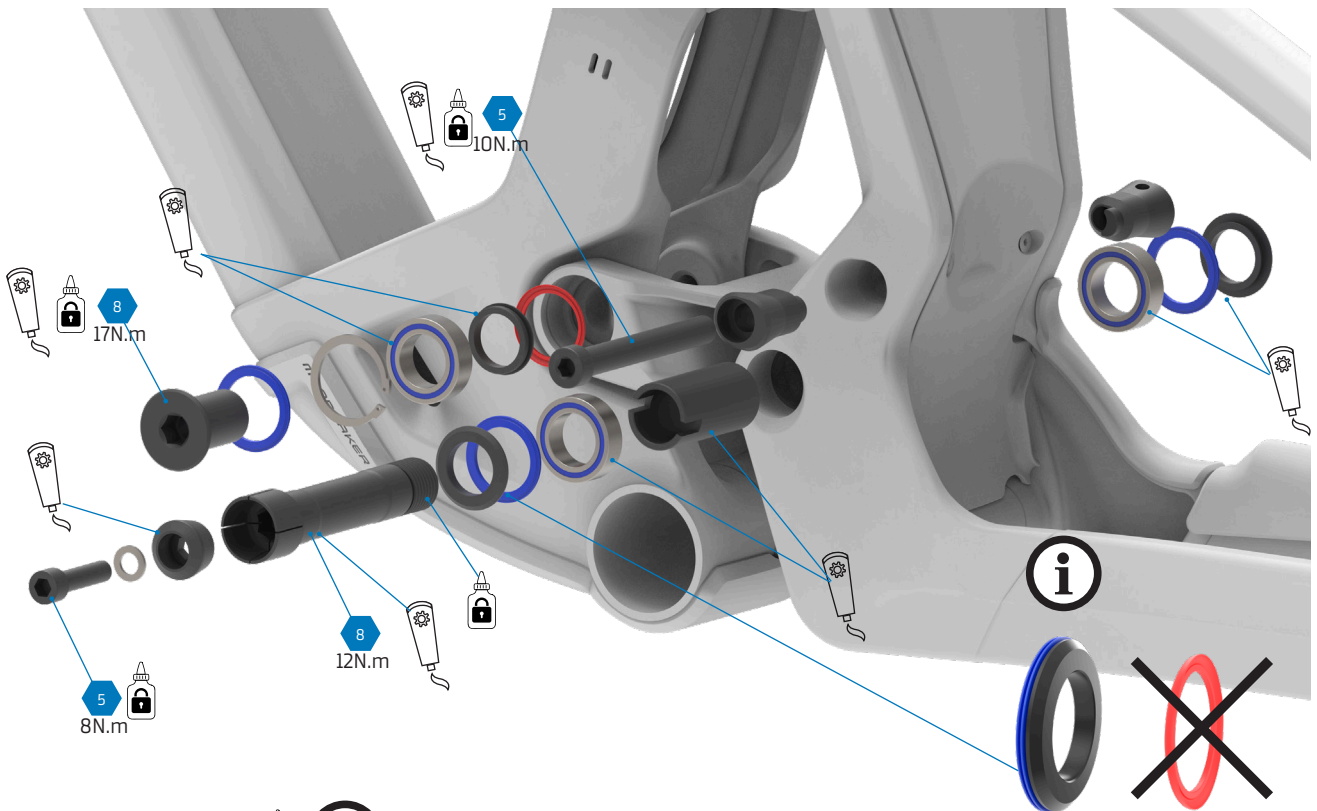


5. GUMMIDICHTUNGEN



Achten Sie auf die Position und Form der Gummidichtungen. Zur besseren Unterscheidung wurden die Farben Rot und Blau verwendet, in der Realität sind die Gummidichtungen jedoch schwarz.

6. UNTERER UMLENKHEBE



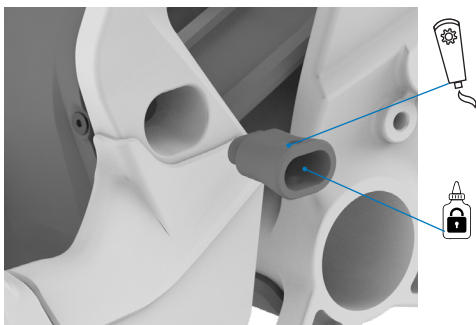
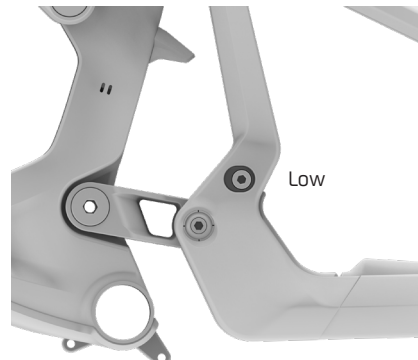
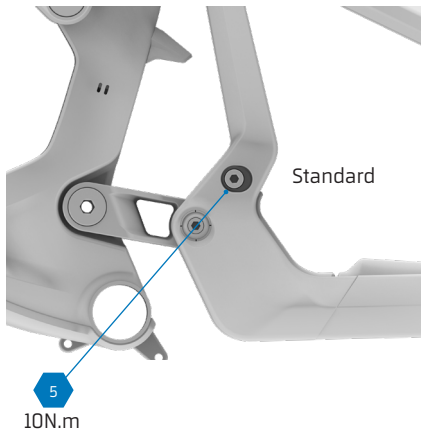
Verwenden Sie Loctite 243 für das Gewinde.



Verwenden Sie Montagefett für den Zusammenbau der Komponenten.

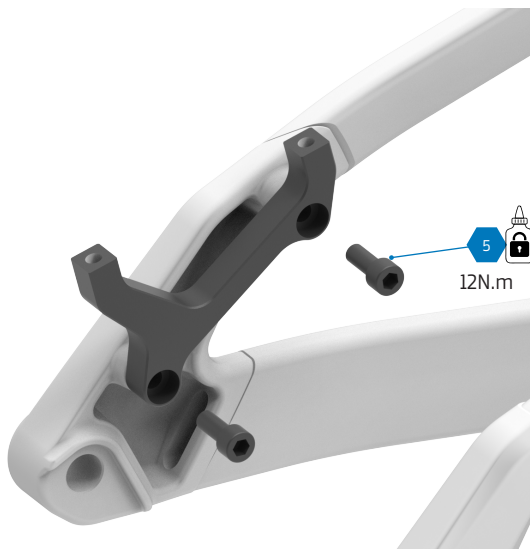


7. FLIP-CHIP DER DÄMPFERBEFESTIGUNG



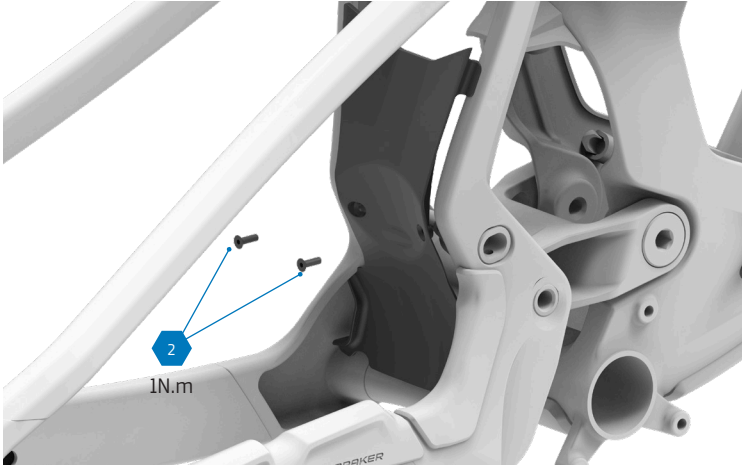
Verwenden Sie Loctite 243 für das Gewinde und Montagefett für die Außenflächen des Flip-Chips.

8. BREMSADAPTER

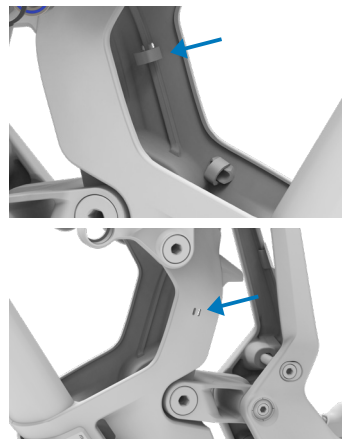
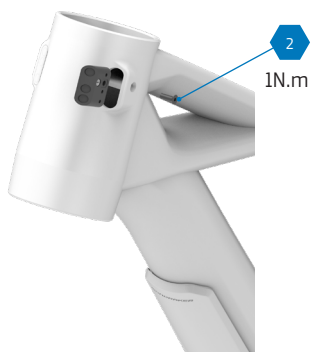




9. FENDERS

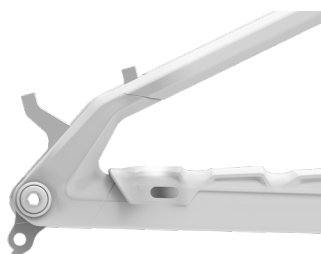


10. INTERNE ZUGVERLEGUNG



Der Rahmen verfügt über Öffnungen, um einen Kabelbinder hindurchzuführen und den Zug der Teleskopsattelstütze zu befestigen.

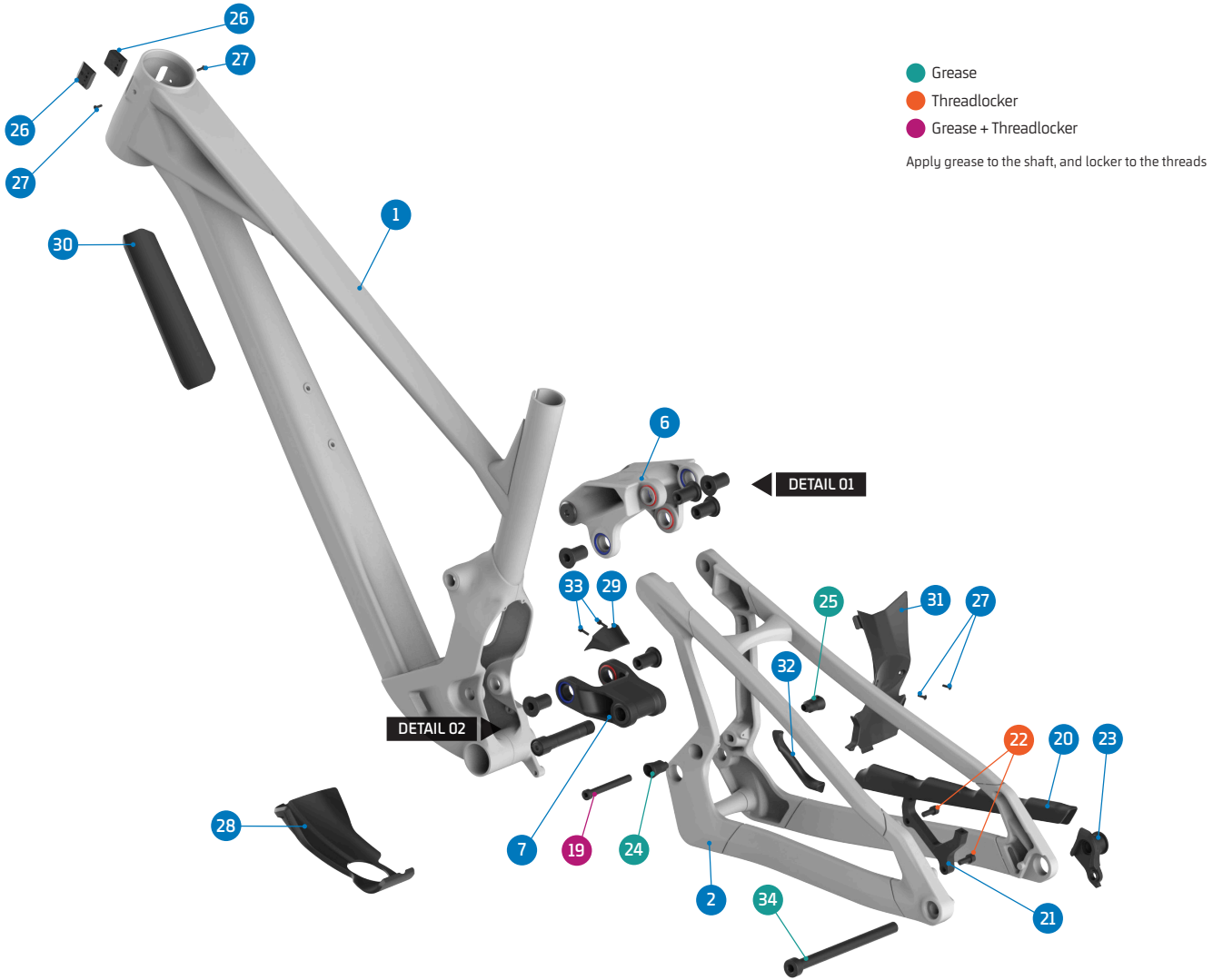
11. SCHALTZUG



Hinter dem Kettenstrebenschutz befindet sich der Kabeleingang für das Schaltwerk. Der Gummi des Schutzes kann an der Markierung durchstoßen werden, um den Zug hindurchzuführen.



12. SPARE PARTS



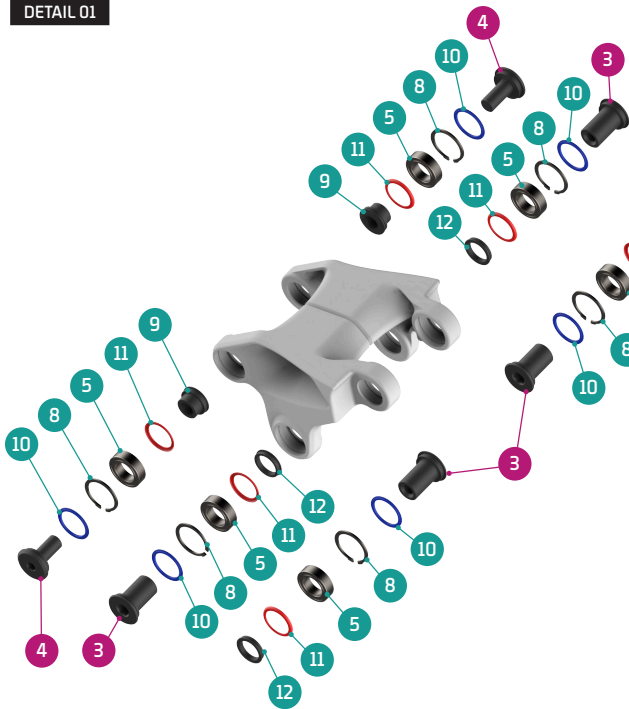
ITEM No.	DESCRIPTION	QTY.	PART NUMBER	TORQUE
1	FRAME	1		
2	REAR TRIANGLE	1		
3	PIVOT AXLE, M15	6	SET 3 & 4	17Nm
4	SHOCK BOLT	2	SET 2	8Nm
5	BEARING, 24x15x7	10	SET 1 / 099.00113	
6	UPPER LINK	1	Refer to B2B web for color options	
7	LOWER LINK	1	099.26092	
8	C-RING	8	SET 2, 3 & 4	
9	SPACER, 10x17x6	2	SET 2	12Nm
10	PIVOT SEAL EXTERNAL	10	SET 2, 3, 4 & 7	
11	PIVOT SEAL INTERNAL	8	SET 2, 3, 4 & 7	
12	PIVOT WASHER	6	SET 3 & 4	
13	PIVOT AXLE, 86L	1	SET 4	8Nm
14	SPACER, 38L	1	SET 4	
15	WASHER, 6x10x1	1	SET 4	10Nm
16	TAPER NUT	1	SET 4	
17	SCREW BOLT, M6x25	1	SET 4	

ITEM No.	DESCRIPTION	QTY.	PART NUMBER	TORQUE
18	SPACER, LOWER	2	SET 4	12Nm
19	SHOCK BOLT, 65L	1	SET 2/099.25038	
20	CHAINSTAY PROTECTOR	1	099.25016	
21	DISC MOUNT	1	SET 5	
22	SCREW BOLT, M6x15	2	SET 5	1Nm
23	HANGER	1	SRAM UDH	
24	SHOCK FLIPCHIP LEFT	1	099.26093	
25	SHOCK FLIPCHIP RIGHT	1	099.26094	
26	CABLE GUIDE HEAD SET 3 CABLES	2	SET 6	2Nm
27	SCREW BOLT, M3x10	4	SET 6	
28	BOTTOM BRACKET PROTECTOR	1	099.26095	
29	FT SHOCK FENDER	1	099.26096	
30	DOWN TUBE PROTECTOR	1	099.26080	
31	REAR TRIANGLE FENDER	1	099.26097	
32	YOKE PROTECTOR	1	099.26098	
33	SCREW BOLT, M3x10	2	099.12116	
34	REAR AXLE	1	112.90027	

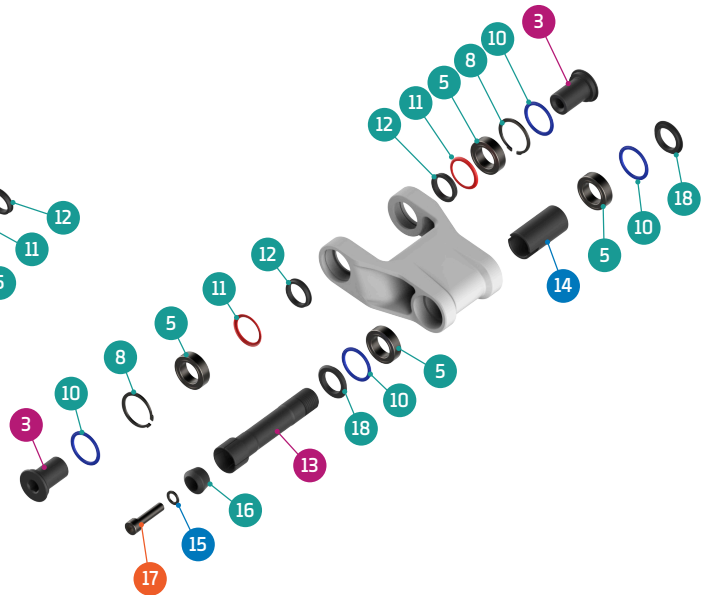


12. SPARE PARTS

DETAIL 01



DETAIL 02



SET 7

SEALS KIT



SET 6

CABLE GUIDE KIT



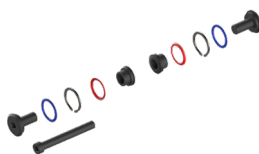
SET 1

ZERO BEARING KIT 25



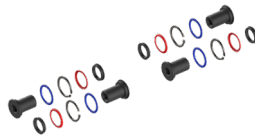
SET 2

SHOCK HARDWARE KIT 24



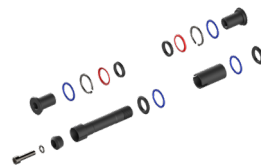
SET 3

UPPER LINK KIT 34



SET 4

LOWER LINK KIT 40



SET 5

DISC ADAPTOR KIT



PART NUMBER	DESCRIPTION	COMPONENTS
099.22100	SET 1: ZERO BEARING KIT 25	BEARING 3802-2RS, 24x15x7 (x10)
099.26202	SET 2: SHOCK HARDWARE KIT 24	PIVOT SEAL INTERNAL (x2) / PIVOT SEAL EXTERNAL (x2) / C-RING (x2) / SPACER, 10x17x6 (x2) / SHOCK BOLT (x2) / SHOCK BOLT, 65 (x1)
099.26300	SET 3: UPPER LINK KIT 34	PIVOT WASHER (x4) / PIVOT SEAL INTERNAL (x4) / PIVOT SEAL EXTERNAL (x4) / PIVOT AXLE, M15 (x4) / C-RING (x4)
099.26402	SET 4: LOWER LINK KIT 40	PIVOT WASHER (x2) / PIVOT SEAL INTERNAL (x2) / PIVOT SEAL EXTERNAL (x4) / PIVOT AXLE, M15 (x2) / C-RING (x2) / SCPACER, 38 (x1) / SCPACER LOWER (x1) / PIVOT AXLE, 86 (x1) / WASHER, 6x10x1 (x1) / TUPPER NUT (x1) / SCREW BOLT, M6x25 (x2)
099.25018	SET 5: DISC ADAPTOR KIT	DISC ADAPTOR (x1) / SCREW BOLT, M6x15 (x2)
099.25013	SET 6: CABLE GUIDE KIT	CABLE GUIDE, 3 CABLES (x1) / SCREW BOTL M2.5X5 (x1) / SCREW BOLT M3X10 (x1)
099.26062	SET 7: SEALS KIT	PIVOT SEAL INTERNAL (x8) / PIVOT SEAL EXTERNAL (x10)



13. KINEMATIK

Die Kinematik des Anark leitet sich von der Plattform des Summum-Wettbewerbsprototyps ab. Dies ermöglicht es uns, das Bike mit einem hocheffizienten Federungssystem auszustatten, dessen Grundlage mittels Telemetrie im anspruchsvollen Rennumfeld entwickelt und optimiert wurde.

Das Übersetzungsverhältnis (Leverage Ratio) des Anark weist eine Progression von 25 % mit einem 205x65-mm-Dämpfer auf, was ideal für die Verwendung von Stahlfederdämpfern ist.

Der Anti-Squat-Wert im Sag liegt bei etwa 98 % – ein idealer Wert für eine längere, leistungsfähige, feinfühligere und effiziente Hinterradfederung.

Der Anti-Rise-Wert im Sag beträgt ca. 99,7 % und liegt damit nahe an den 100 % für ein optimales und völlig unabhängiges Verhalten der Hinterradbremse gegenüber der Federungsperformance.

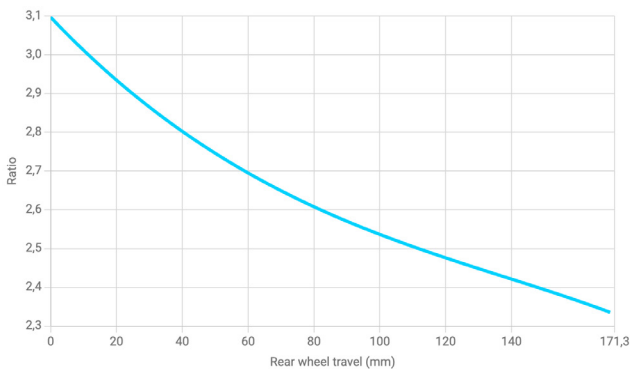
Empfohlene Federn für den Hinterbaudämpfer:

RockShox
S 350 lb/in, M 400 lb/in, ML 450 lb/in, L 500 lb/in und XL 500 lb/in

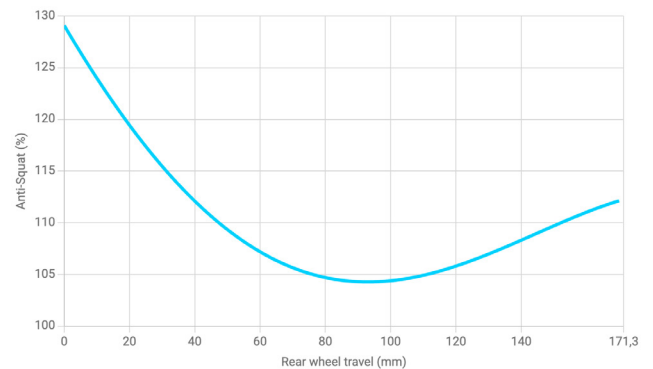
Fox
S 350 lb/in, M 400 lb/in, ML 450 lb/in, L 500 lb/in und XL 500 lb/in

Öhlins
S 343 lb/in, M 411 lb/in, ML 457 lb/in, L 502 lb/in und XL 502 lb/in

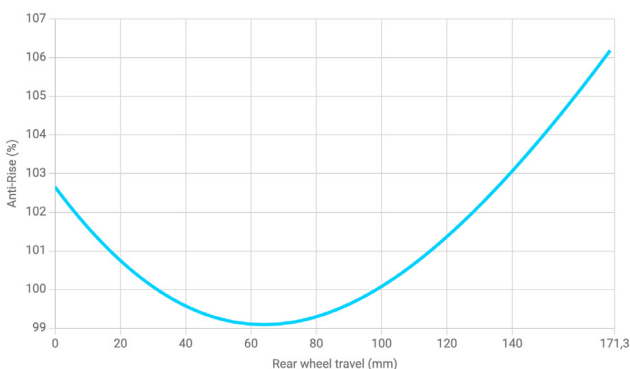
ANARK **LEVERAGE RATIO**



ANARK **ANTI-SQUAT**



ANARK **ANTI-RISE**





Alle Informationen und Bilder in diesem Dokument dienen nur zu Informationszwecken und stellen keinen rechtlichen Vertrag zwischen Mondraker und einer natürlichen oder juristischen Person dar. Spezifikationen, Geometrien und andere veröffentlichte technische Informationen können ohne vorherige Ankündigung geändert werden.

© © Alle Marken und Modelle sind Eigentum von Blue Factory Team, S.L.U. und durch geltende Gesetze und anwendbare internationale Übereinkommen geschützt.

MANUELS ET DOCUMENTS





CONSIGNES GÉNÉRALES ET DE SÉCURITÉ

Les 3 icônes suivantes peuvent apparaître dans ce guide technique. Chacune d'elles indique que les précautions indiquées doivent être prises :

AVERTISSEMENT :

Le non-respect des instructions ou une utilisation inappropriée du vélo peuvent causer des blessures graves, voire entraîner la mort. Ces opérations impliquent des difficultés techniques et, si elles ne sont pas effectuées correctement, elles pourraient endommager votre vélo ou entraîner l'annulation de la garantie.

ATTENTION :

Ne pas suivre les instructions ou utiliser le vélo de manière inappropriée peut provoquer des blessures légères. Ces tâches impliquent une difficulté technique et, si elles ne sont pas effectuées correctement, elles pourraient provoquer des dommages sur votre vélo ou entraîner l'annulation de la garantie.

INFORMATIONS

Informations indispensables à la réalisation correcte de cette tâche en évitant de causer des dommages au vélo ou de perdre la garantie, mais qui ne présentent aucun risque pour les personnes.

AUTRES CONSIDÉRATIONS

- L'utilisation de pièces de rechange non originales peut entraîner des dommages, des dysfonctionnements et des accidents aux conséquences graves..
- Pour effectuer certaines des opérations décrites dans ce manuel, des qualifications supérieures à celles de l'utilisateur de vélo moyen sont nécessaires. Si vous ne pouvez pas suivre l'une de ces étapes, apportez votre vélo auprès d'un revendeur Mondraker agréé pour effectuer l'entretien et le remplacement de ses composants. L'installation incorrecte de pièces de rechange peut entraîner des dysfonctionnements, des accidents, des blessures et l'annulation de la garantie.

NETTOYAGE ET ENTRETIEN

- Une fois les pièces démontées, il est recommandé de nettoyer, de graisser et de mettre du frein filet (si nécessaire) sur les composants que vous comptez réutiliser.

LÉGENDE DES SYMBOLES



Frein filet de niveau moyen. Loctite 243.

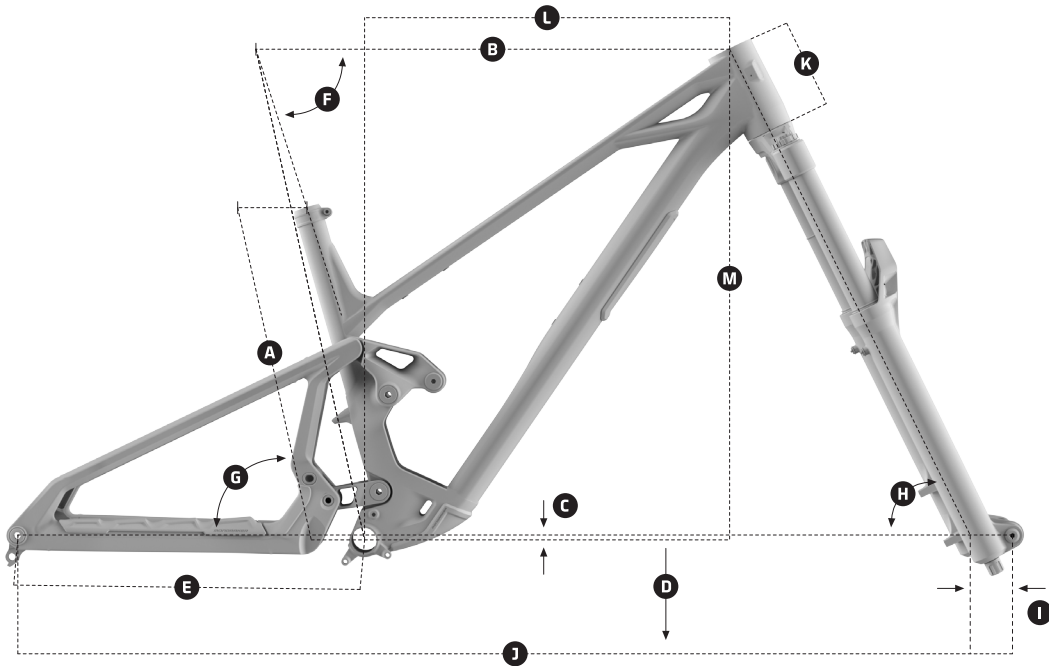


Graisse synthétique de qualité pour montage.



Graisse spéciale de friction pour carbone.

1. GÉOMÉTRIE



ANARK

TAILLE DU CADRE	S [STD / LOW]	M [STD / LOW]	ML [STD / LOW]	L [STD / LOW]	XL [STD / LOW]
A Longueur du tube de selle	380 mm	410 mm	435 mm	460 mm	490 mm
B Longueur du tube supérieur	583 mm / 584 mm	603 mm / 604 mm	625 mm / 626 mm	647 mm / 648 mm	669 mm / 670 mm
C Différence axe boîtier/axe moyeu	-10 mm / -15 mm	-10 mm / -15 mm	-10 mm / -15 mm	-10 mm / -15 mm	-10 mm / -15 mm
D Hauteur de pédalier	346 mm / 341 mm	346 mm / 341 mm	346 mm / 341 mm	346 mm / 341 mm	346 mm / 341 mm
E Longueur des bases	445 mm / 446 mm	445 mm / 446 mm	445 mm / 446 mm	445 mm / 446 mm	445 mm / 446 mm
F Angle de tube de selle	74.00° / 73.65°	74.00° / 73.65°	74.00° / 73.65°	74.00° / 73.65°	74.00° / 73.65°
G Angle de tube de selle effectif	77.50° / 77.15°	77.50° / 77.15°	77.50° / 77.15°	77.50° / 77.15°	77.50° / 77.15°
H Angle du tube de direction	63.50° / 63.15°	63.50° / 63.15°	63.50° / 63.15°	63.50° / 63.15°	63.50° / 63.15°
I Déport de fourche	44 mm / 44 mm	44 mm / 44 mm	44 mm / 44 mm	44 mm / 44 mm	44 mm / 44 mm
J Empattement	1241 mm	1261 mm	1285 mm	1310 mm	1334 mm
K Longueur du tube de direction	110 mm	110 mm	110 mm	110 mm	110 mm
L Reach	440 mm / 436 mm	460 mm / 456 mm	480 mm / 476 mm	500 mm / 496 mm	520 mm / 516 mm
M Stack	644 mm / 647 mm	644 mm / 647 mm	653 mm / 656 mm	662 mm / 665 mm	671 mm / 674 mm

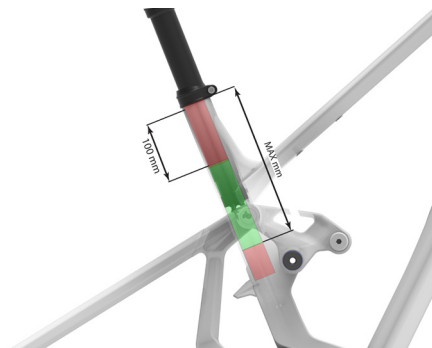
RÉGLAGE FLIP CHIP AMORTISSEUR +/-5mm hauteur de boîtier, angles 0,35°



2. SPÉCIFICATIONS TECHNIQUES DU CADRE

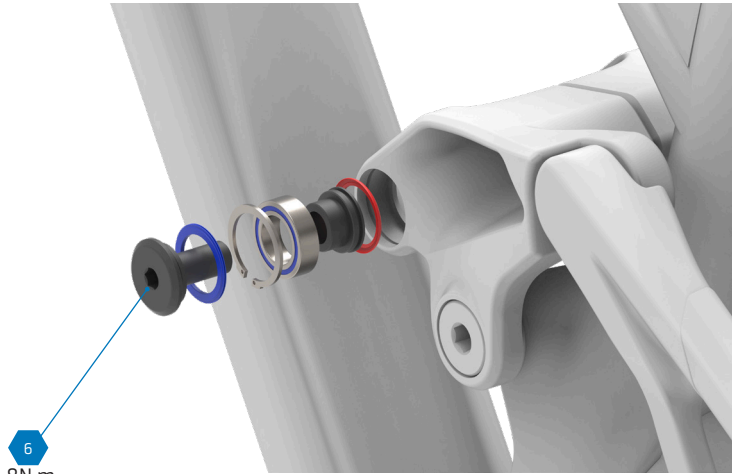
TAILLE DE CADRE	S / M / ML / L / XL
TAILLE ROUE AVANT (pouces)	29"
AXE AVANT	110 mm x 15 mm (BOOST)
TAILLE ROUE ARRIÈRE (pouces)	27,5"
AXE ARRIÈRE	148 mm x 12 mm
ESSIEU ARRIÈRE	REAR AXLE, 12x148 P1.0 L180
BOÎTIER DE PÉDALIER	BSA 73 mm
DÉBATTEMENT ARRIÈRE	170 mm
AMORTISSEUR ARRIÈRE	205 x 65 mm TRUNNION, 30 x 8 mm
DÉBATTEMENT AVANT	180 mm
DIAMÈTRE DE LA TIGE DE SELLE	31.6 mm / 36.9 mm
LIGNE DE CHAÎNE DIRECTION	55 mm
JEU DE DIRECTION	Onoff custom ZS56/ZS56, 1-1/8", 1.2"
NOMBRE DE DENTS MAXIMAL (PLATEAU)	32T
FREIN ARRIÈRE	POST MOUNT CUSTOM ADAPTER, DIRECT 200
DÉGAGEMENT MAXIMAL PNEUS	27'5 x 2.5


3. PROFONDEUR D'INSERTION DE TIGE




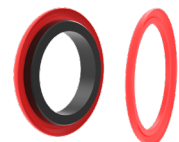
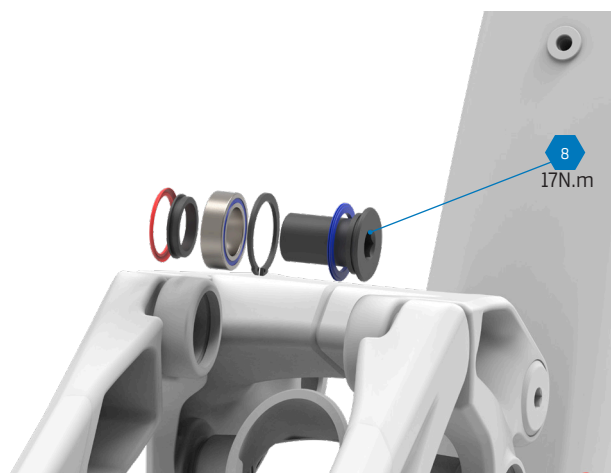
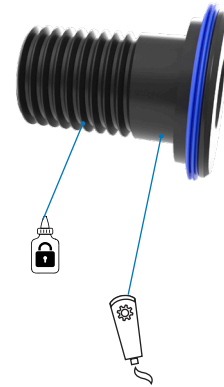
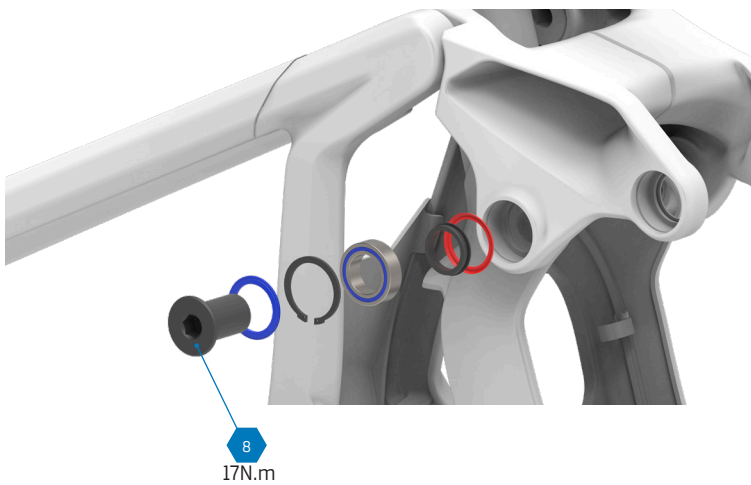
TAILLE CADRE	MIN. (mm)	MAX. (mm)
XL	100	190
L	100	210
ML	100	230
M	100	260
S	100	280

4. BIELLETTE SUPÉRIEURE



 Utilisez de la Loctite 243 pour le filetage.
Astuce de Pro : Au lieu d'appliquer le frein filet sur la vis, vous pouvez le mettre directement dans le filetage interne du cadre du vélo. Cela évite de contaminer les autres composants avec le frein filet lors de l'insertion de la vis.

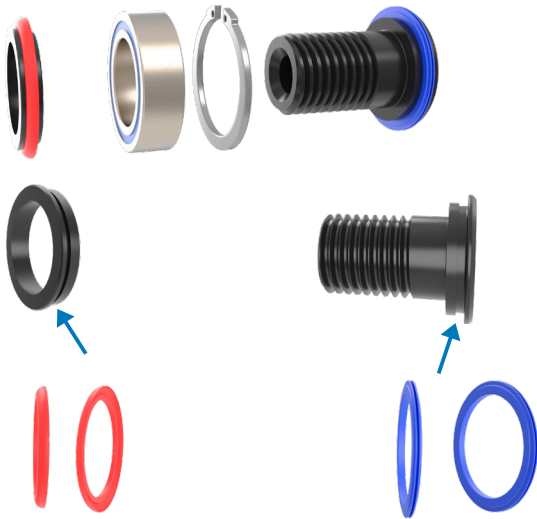
 Utilisez de la graisse de montage pour assembler les composants.



Plus d'informations : Consultez la section « 8. JOINTS EN CAOUTCHOUC » de ce guide.

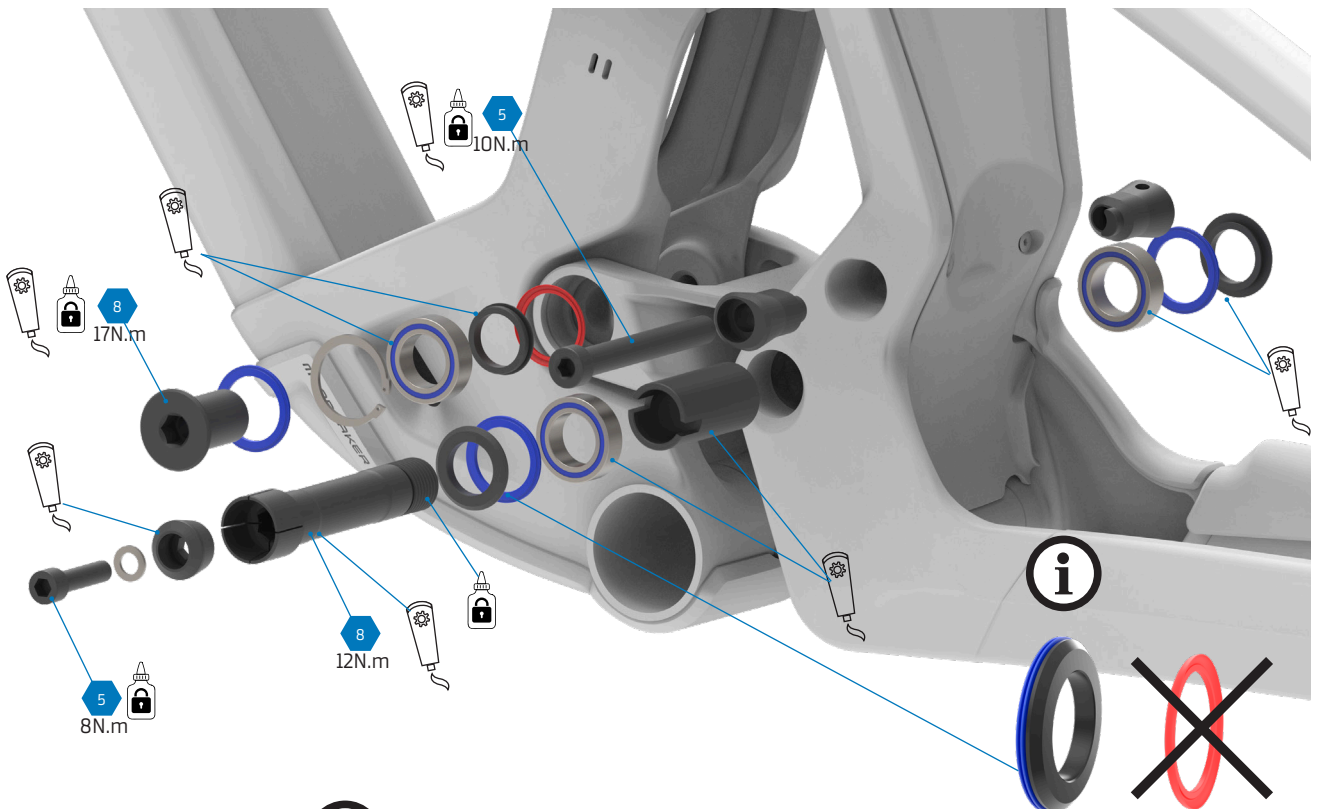


5. JOINTS EN CAOUTCHOUC



Faites attention à la position et à la forme des joints en caoutchouc. Les couleurs rouge et bleue ont été utilisées pour les différencier, mais en réalité, les joints en caoutchouc sont noirs.

6. BIELLETTE INFÉRIURE



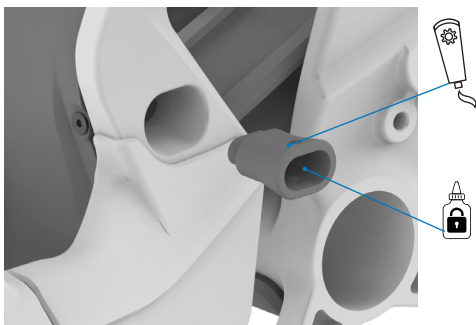
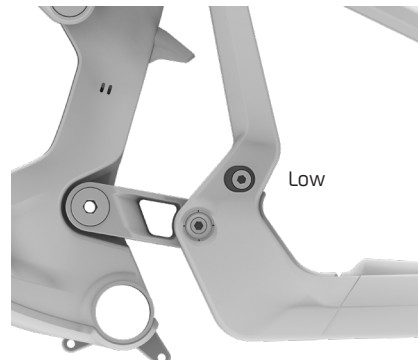
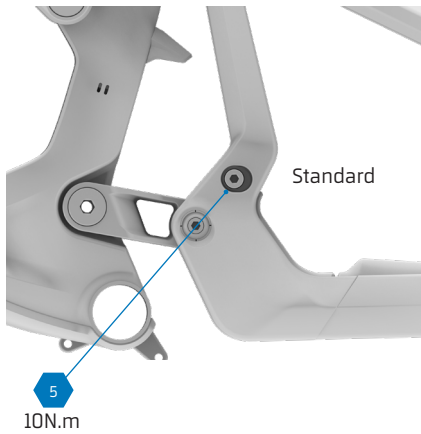
Utilisez de la Loctite 243 pour le filetage.



Utilisez de la graisse de montage pour assembler les composants.

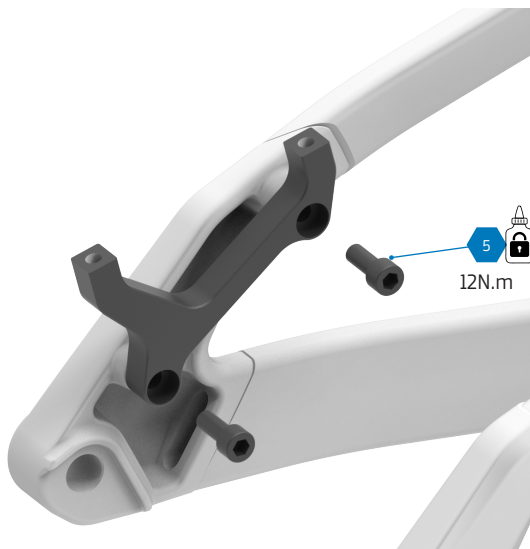


7. FLIP CHIP DE FIXATION DE L'AMORTISSEUR



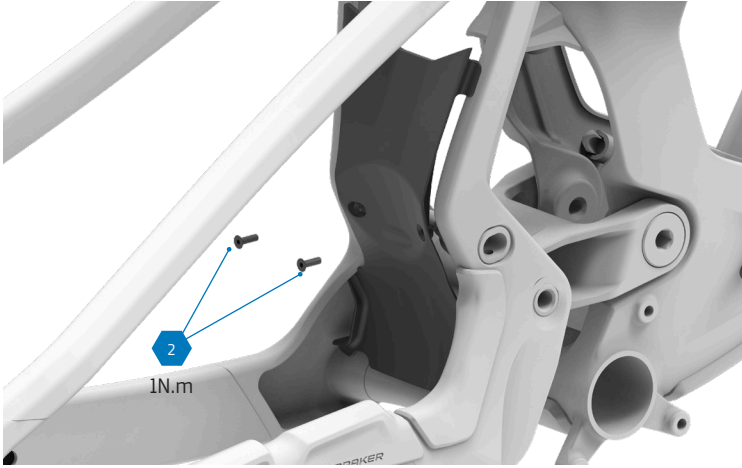
Utilisez de la Loctite 243 pour le filetage, et de la graisse de montage pour les surfaces externes du flip chip.

8. ADAPTATEUR DE FREIN

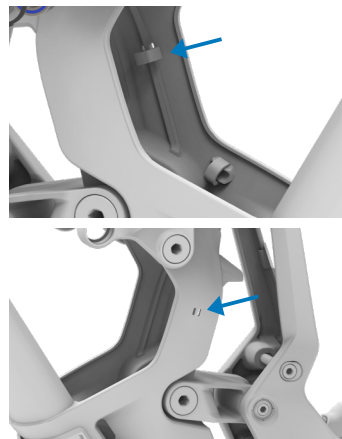
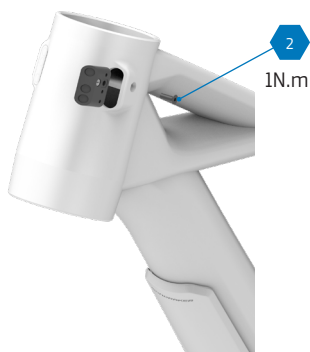




9. DÉFLECTEURS

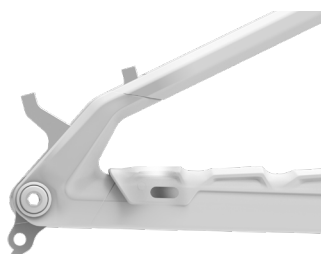


10. PASSAGE INTERNE DES CÂBLES



Le cadre dispose d'ouvertures pour faire passer un collier de serrage et maintenir le câble de la tige de selle télescopique.

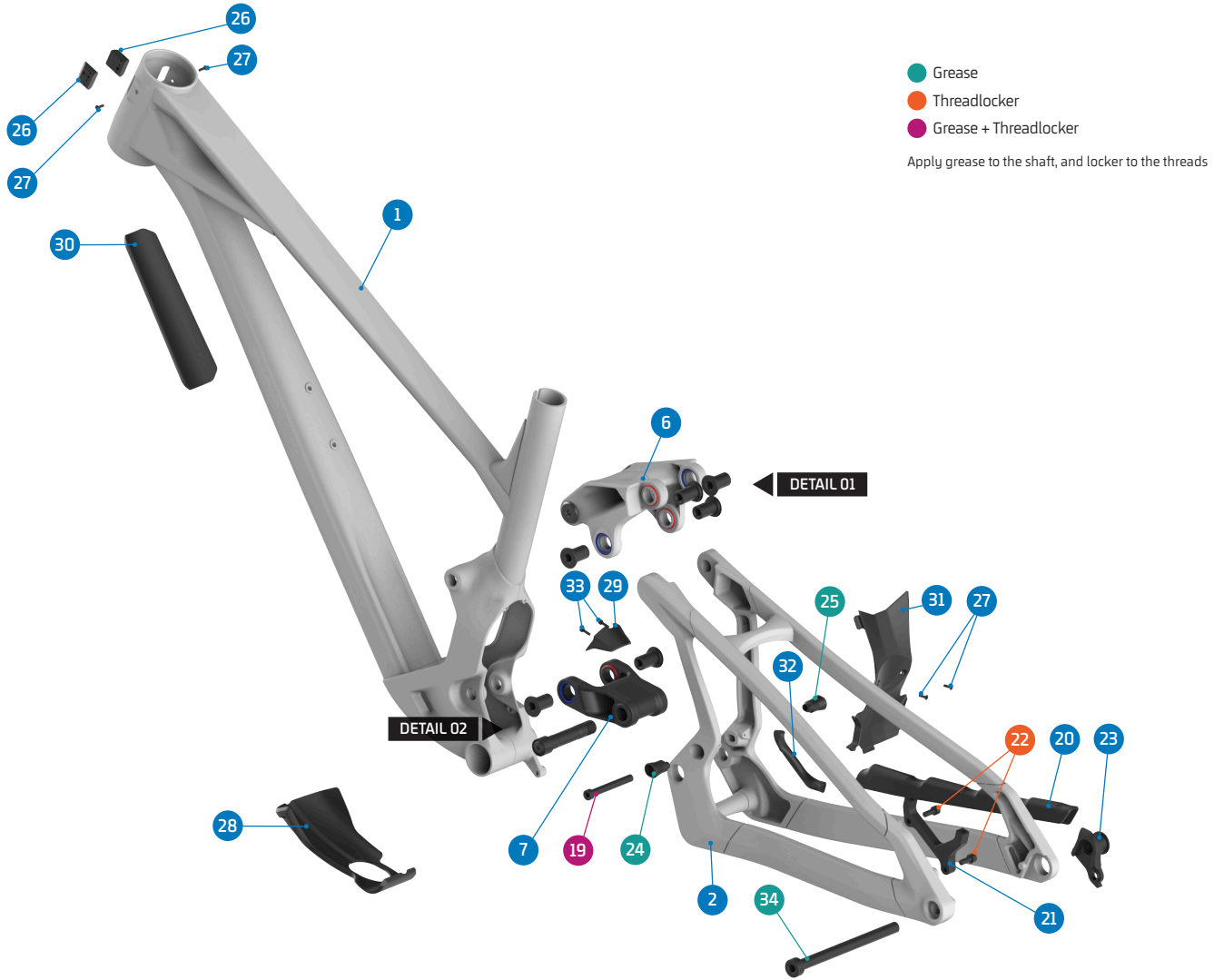
11. CÂBLE DE DÉRAILLEUR



Derrière le protège-base se trouve l'entrée de câble pour le dérailleur arrière. Le caoutchouc de la protection peut être percé au niveau du repère pour y faire passer le câble.



12. SPARE PARTS



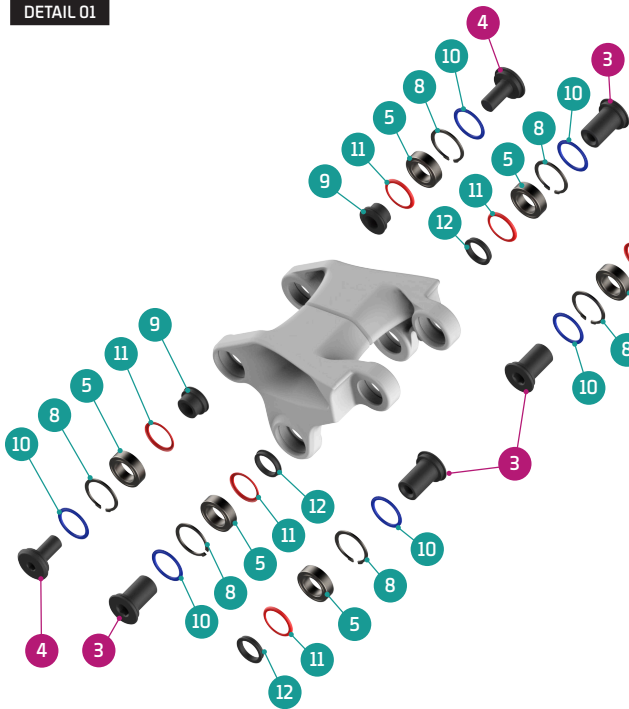
ITEM No.	DESCRIPTION	QTY.	PART NUMBER	TORQUE
1	FRAME	1		
2	REAR TRIANGLE	1		
3	PIVOT AXLE, M15	6	SET 3 & 4	17Nm
4	SHOCK BOLT	2	SET 2	8Nm
5	BEARING, 24x15x7	10	SET 1 / 099.00113	
6	UPPER LINK	1	Refer to B2B web for color options	
7	LOWER LINK	1	099.26092	
8	C-RING	8	SET 2, 3 & 4	
9	SPACER, 10x17x6	2	SET 2	12Nm
10	PIVOT SEAL EXTERNAL	10	SET 2, 3, 4 & 7	
11	PIVOT SEAL INTERNAL	8	SET 2, 3, 4 & 7	
12	PIVOT WASHER	6	SET 3 & 4	
13	PIVOT AXLE, 86L	1	SET 4	8Nm
14	SPACER, 38L	1	SET 4	
15	WASHER, 6x10x1	1	SET 4	10Nm
16	TAPER NUT	1	SET 4	
17	SCREW BOLT, M6x25	1	SET 4	

ITEM No.	DESCRIPTION	QTY.	PART NUMBER	TORQUE
18	SPACER, LOWER	2	SET 4	12Nm
19	SHOCK BOLT, 65L	1	SET 2/099.25038	
20	CHAINSTAY PROTECTOR	1	099.25016	
21	DISC MOUNT	1	SET 5	
22	SCREW BOLT, M6x15	2	SET 5	1Nm
23	HANGER	1	SRAM UDH	
24	SHOCK FLIPCHIP LEFT	1	099.26093	
25	SHOCK FLIPCHIP RIGHT	1	099.26094	
26	CABLE GUIDE HEAD SET 3 CABLES	2	SET 6	2Nm
27	SCREW BOLT, M3x10	4	SET 6	
28	BOTTOM BRACKET PROTECTOR	1	099.26095	
29	FT SHOCK FENDER	1	099.26096	
30	DOWN TUBE PROTECTOR	1	099.26080	
31	REAR TRIANGLE FENDER	1	099.26097	
32	YOKE PROTECTOR	1	099.26098	
33	SCREW BOLT, M3x10	2	099.12116	
34	REAR AXLE	1	112.90027	

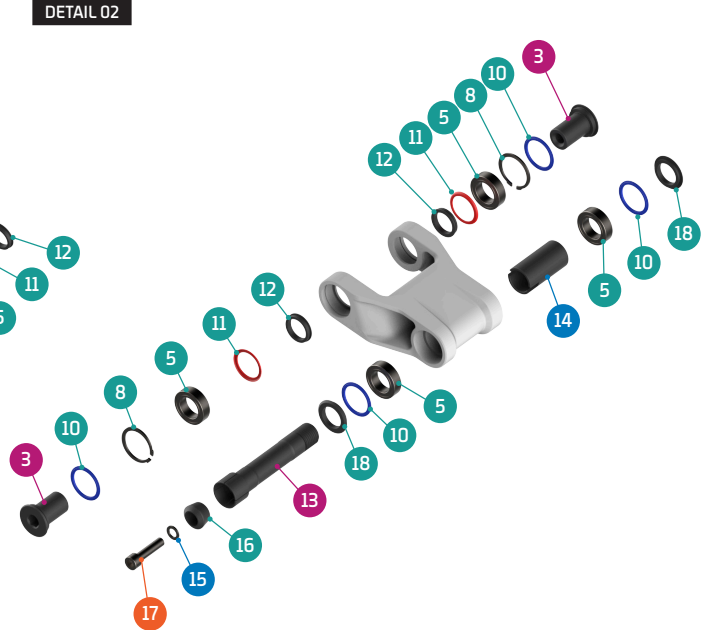


12. SPARE PARTS

DETAIL 01



DETAIL 02



SET 7

SEALS KIT



SET 6

CABLE GUIDE KIT



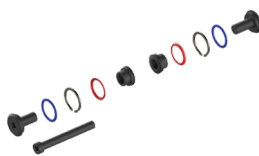
SET 1

ZERO BEARING KIT 25



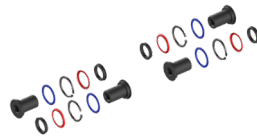
SET 2

SHOCK HARDWARE KIT 24



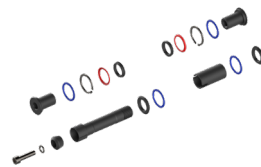
SET 3

UPPER LINK KIT 34



SET 4

LOWER LINK KIT 40



SET 5

DISC ADAPTOR KIT



PART NUMBER	DESCRIPTION	COMPONENTS
099.22100	SET 1: ZERO BEARING KIT 25	BEARING 3802-2RS, 24x15x7 (x10)
099.26202	SET 2: SHOCK HARDWARE KIT 24	PIVOT SEAL INTERNAL (x2) / PIVOT SEAL EXTERNAL (x2) / C-RING (x2) / SPACER, 10x17x6 (x2) / SHOCK BOLT (x2) / SHOCK BOLT, 65 (x1)
099.26300	SET 3: UPPER LINK KIT 34	PIVOT WASHER (x4) / PIVOT SEAL INTERNAL (x4) / PIVOT SEAL EXTERNAL (x4) / PIVOT AXLE, M15 (x4) / C-RING (x4)
099.26402	SET 4: LOWER LINK KIT 40	PIVOT WASHER (x2) / PIVOT SEAL INTERNAL (x2) / PIVOT SEAL EXTERNAL (x4) / PIVOT AXLE, M15 (x2) / C-RING (x2) / SCPACER, 38 (x1) / SCPACER LOWER (x1) / PIVOT AXLE, 86 (x1) / WASHER, 6x10x1 (x1) / TUPPER NUT (x1) / SCREW BOLT, M6x25 (x2)
099.25018	SET 5: DISC ADAPTOR KIT	DISC ADAPTOR (x1) / SCREW BOLT, M6x15 (x2)
099.25013	SET 6: CABLE GUIDE KIT	CABLE GUIDE, 3 CABLES (x1) / SCREW BOTL M2.5X5 (x1) / SCREW BOLT M3X10 (x1)
099.26062	SET 7: SEALS KIT	PIVOT SEAL INTERNAL (x8) / PIVOT SEAL EXTERNAL (x10)



13. CINÉMATIQUE

La cinématique de l'Anark dérive de la plateforme du prototype de compétition Summum. Cela nous permet de l'équiper d'un système de suspension d'une efficacité maximale, dont la base a été développée et optimisée par télémétrie dans l'environnement exigeant des courses.

Le ratio de levier (leverage ratio) de l'Anark offre une progressivité de 25 % avec un amortisseur de 205x65 mm, idéal pour l'utilisation d'amortisseurs à ressort hélicoïdal.

L'anti-squat au point de sag se situe autour de 98 %, une valeur idéale pour une suspension arrière à plus grand débattement, performante, onctueuse et efficace.

L'anti-rise au point de sag est d'environ 99,7 %, proche des 100 % pour obtenir un comportement idéal et une indépendance maximale du frein arrière par rapport au fonctionnement de la suspension.

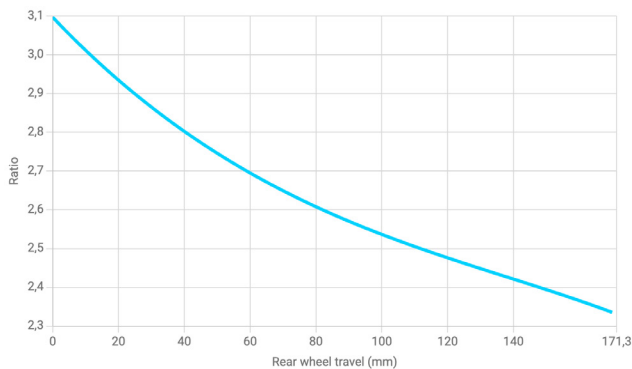
Ressorts recommandés pour l'amortisseur arrière :

RockShox
S 350 lb/in, M 400 lb/in, ML 450 lb/in, L 500 lb/in et XL 500 lb/in

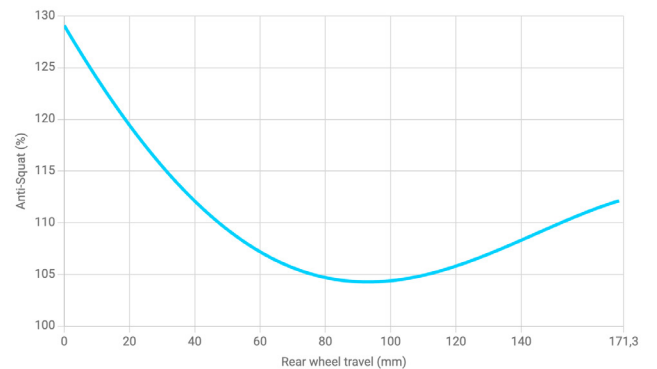
Fox
S 350 lb/in, M 400 lb/in, ML 450 lb/in, L 500 lb/in et XL 500 lb/in

Öhlins
S 343 lb/in, M 411 lb/in, ML 457 lb/in, L 502 lb/in et XL 502 lb/in

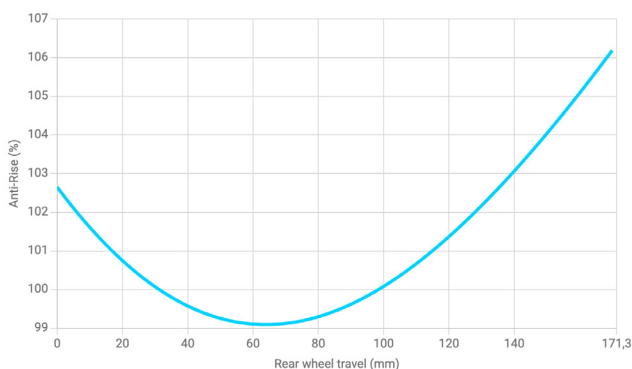
ANARK LEVERAGE RATIO



ANARK ANTI-SQUAT



ANARK ANTI-RISE





Toutes les informations et les photos figurant sur ce document sont fournies à titre informatif uniquement et ne constituent pas un contrat juridique entre Mondraker et toute personne ou organisme. Les spécifications, les géométries ou toute autre information technique publiée sont susceptibles de changer sans préavis.

© © Toutes les marques et tous les modèles sont la propriété de Blue Factory Team, S.L.U. et sont protégés par les lois en vigueur et les accords internationaux applicables.

MANUALI E DOCUMENTI





ISTRUZIONI GENERALI DI SICUREZZA

In questo manuale tecnico vengono utilizzati i seguenti 3 simboli. Questi simboli servono per prestare attenzione alle seguenti precauzioni:

PERICOLO:

Non seguire le indicazioni o utilizzare la bicicletta in modo improprio poiché potrebbero causare lesioni gravi o letali. Queste mansioni comportano difficoltà tecniche e, se sono eseguite male, potrebbero danneggiare la bicicletta o comportare l'annullamento della garanzia.

ATTENZIONE!

Non seguire le indicazioni o utilizzare la bicicletta in modo improprio può causare lesioni lievi. Queste mansioni comportano difficoltà tecniche e, se sono eseguite male, potrebbero danneggiare la bicicletta o comportare l'annullamento della garanzia.

INFORMAZIONI

Informazioni indispensabili per una corretta esecuzione dei procedimenti per evitare eventuali danni della bicicletta o perdita della garanzia, ma che non comportano alcun rischio per la persona.

ALTRE CONSIDERAZIONI

- L'uso di ricambi non originali può causare danni, malfunzionamenti e incidenti che possono portare a gravi conseguenze.
- Per eseguire i passaggi descritti in questo manuale, sono richieste competenze che vanno ben oltre le conoscenze di un'utilizzatore medio di bicicletta. Nel caso in cui non si è qualificati per seguire una delle seguenti indicazioni, si prega di portare la bicicletta presso un servizio tecnico autorizzato Mondraker per la manutenzione e la sostituzione dei suoi componenti. L'installazione errata dei pezzi di ricambio può causare malfunzionamenti, incidenti, lesioni e l'annullamento della garanzia.

PULIZIA E CURA

- Non appena i pezzi sono stati smontati, si consiglia di pulire, ingrassare e mettere il frenafili (se necessario) sui componenti che verranno riutilizzati.

LEGENDA DEI SIMBOLI



Fissatore per filettature di grado medio. Loctite 243.



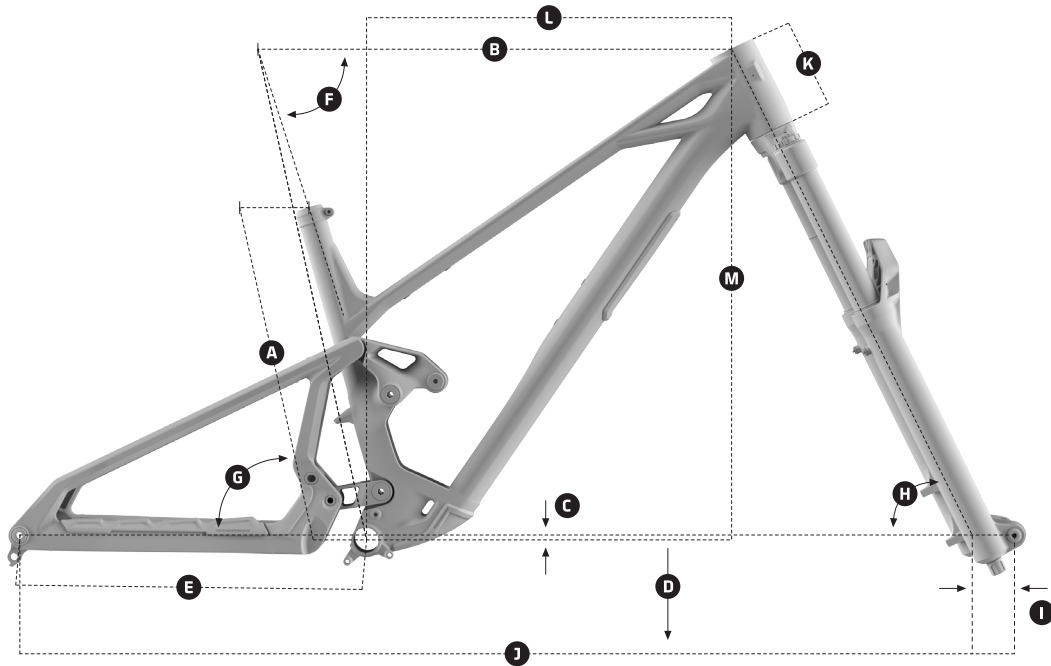
Grasso sintetico di qualità per il montaggio.



Grasso speciale carbonio per creare attriti.



1. GEOMETRIA



ANARK

DIMENSIONE DEL TELAIO	S [STD / LOW]	M [STD / LOW]	ML [STD / LOW]	L [STD / LOW]	XL [STD / LOW]
A Lunghezza Piantone	380 mm	410 mm	435 mm	460 mm	490 mm
B Lunghezza Tubo Orizz.	583 mm / 584 mm	603 mm / 604 mm	625 mm / 626 mm	647 mm / 648 mm	669 mm / 670 mm
C BB Drop	-10 mm / -15 mm	-10 mm / -15 mm	-10 mm / -15 mm	-10 mm / -15 mm	-10 mm / -15 mm
D Altezza movimento centrale	346 mm / 341 mm	346 mm / 341 mm	346 mm / 341 mm	346 mm / 341 mm	346 mm / 341 mm
E Lunghezza Batticatena	445 mm / 446 mm	445 mm / 446 mm	445 mm / 446 mm	445 mm / 446 mm	445 mm / 446 mm
F Angolo tubo sella	74.00° / 73.65°	74.00° / 73.65°	74.00° / 73.65°	74.00° / 73.65°	74.00° / 73.65°
G Angolo Sella	77.50° / 77.15°	77.50° / 77.15°	77.50° / 77.15°	77.50° / 77.15°	77.50° / 77.15°
H Angolo Sterzo	63.50° / 63.15°	63.50° / 63.15°	63.50° / 63.15°	63.50° / 63.15°	63.50° / 63.15°
I Offset Forcella / Rake	44 mm / 44 mm	44 mm / 44 mm	44 mm / 44 mm	44 mm / 44 mm	44 mm / 44 mm
J Interasse	1241 mm	1261 mm	1285 mm	1310 mm	1334 mm
K Lunghezza Tubo Sterzo	110 mm	110 mm	110 mm	110 mm	110 mm
L Reach	440 mm / 436 mm	460 mm / 456 mm	480 mm / 476 mm	500 mm / 496 mm	520 mm / 516 mm
M Stack	644 mm / 647 mm	644 mm / 647 mm	653 mm / 656 mm	662 mm / 665 mm	671 mm / 674 mm

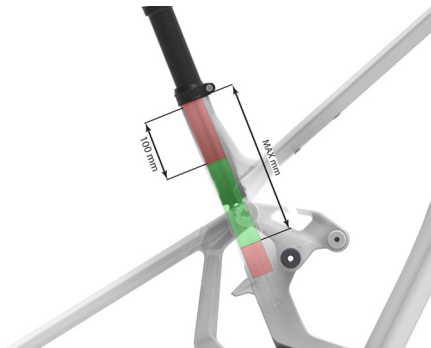
REGOLAZIONE FLIP CHIP AMMORTIZZATORE +/-5mm altezza movimento centrale, angoli 0,35°



2. SPECIFICHE DEL TELAIO DELLA BICICLETTA

TAGLIE TELAIO	S / M / ML / L / XL
DIMENSIONE RUOTA ANTERIORE	29"
MOZZO ANTERIORE	110 mm x 15 mm (BOOST)
DIMENSIONE RUOTA POSTERIORE	27,5"
MOZZO POSTERIORE	148 mm x 12 mm
ASSE POSTERIORE	REAR AXLE, 12x148 P1.0 L180
MOVIMENTO CENTRALE	BSA 73 mm
ESCURSIONE POSTERIORE	170 mm
AMMORTIZZATORI POSTERIORI	205 x 65 mm TRUNNION, 30 x 8 mm
ESCURSIONE ANTERIORE	180 mm
DIAMETRO REGGISELLA	31.6 mm / 36.9 mm
LINEA CATENA	55 mm
STERZO	Onoff custom ZS56/ZS56, 1-1/8", 1.2"
DIMENSIONE CORONA MASSIMA	32T
FRENO POSTERIORE	POST MOUNT CUSTOM ADAPTER, DIRECT 200
DIMENSIONE MASSIMA RUOTA COMPATIBILE	27'5 x 2.5

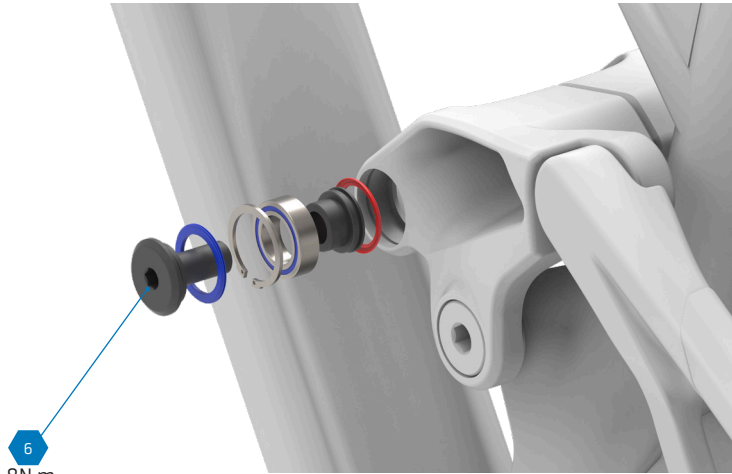
3. PROFONDITÀ INSERIMENTO REGGISELLA





TAGLIA TELAIO	MIN. (mm)	MAX. (mm)
XL	100	190
L	100	210
ML	100	230
M	100	260
S	100	280

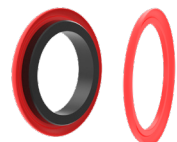
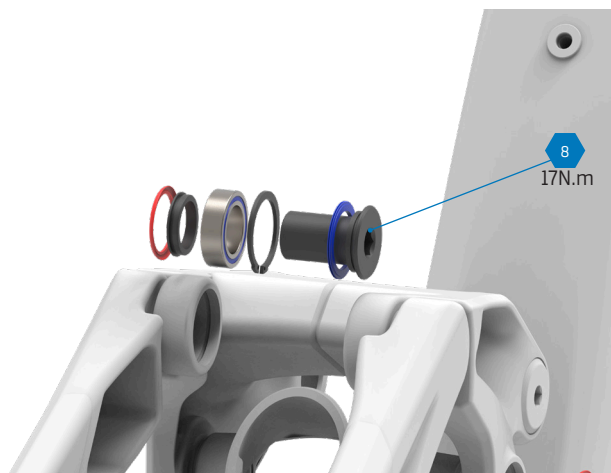
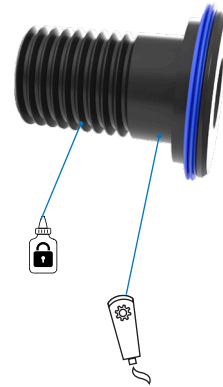
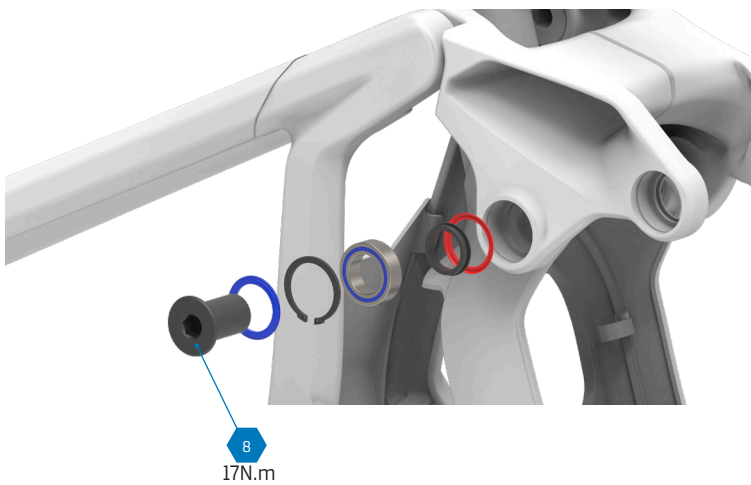


4. LINK SUPERIORE



 Utilizzare Loctite 243 per la filettatura.
Consiglio da Pro: Invece di applicare il frenafiletti sulla vite, puoi metterlo direttamente nella filettatura interna del telaio della bicicletta. In questo modo si evita di contaminare gli altri componenti con il frenafiletti durante l'inserimento della vite.

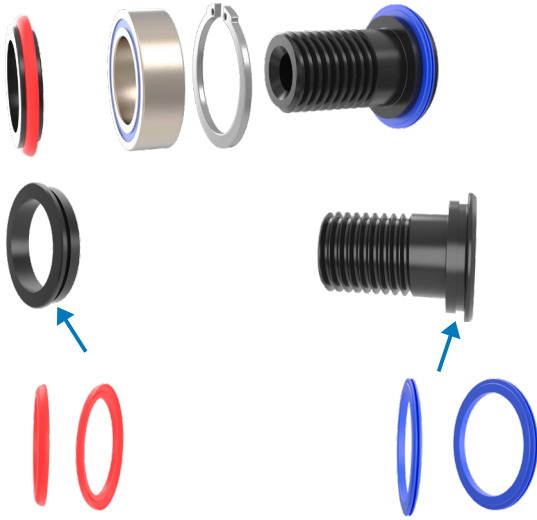
 Utilizzare grasso di montaggio per assemblare i componenti.



Maggiori informazioni: Consulta la sezione "8. GUARNIZIONI IN GOMMA" di questa guida.

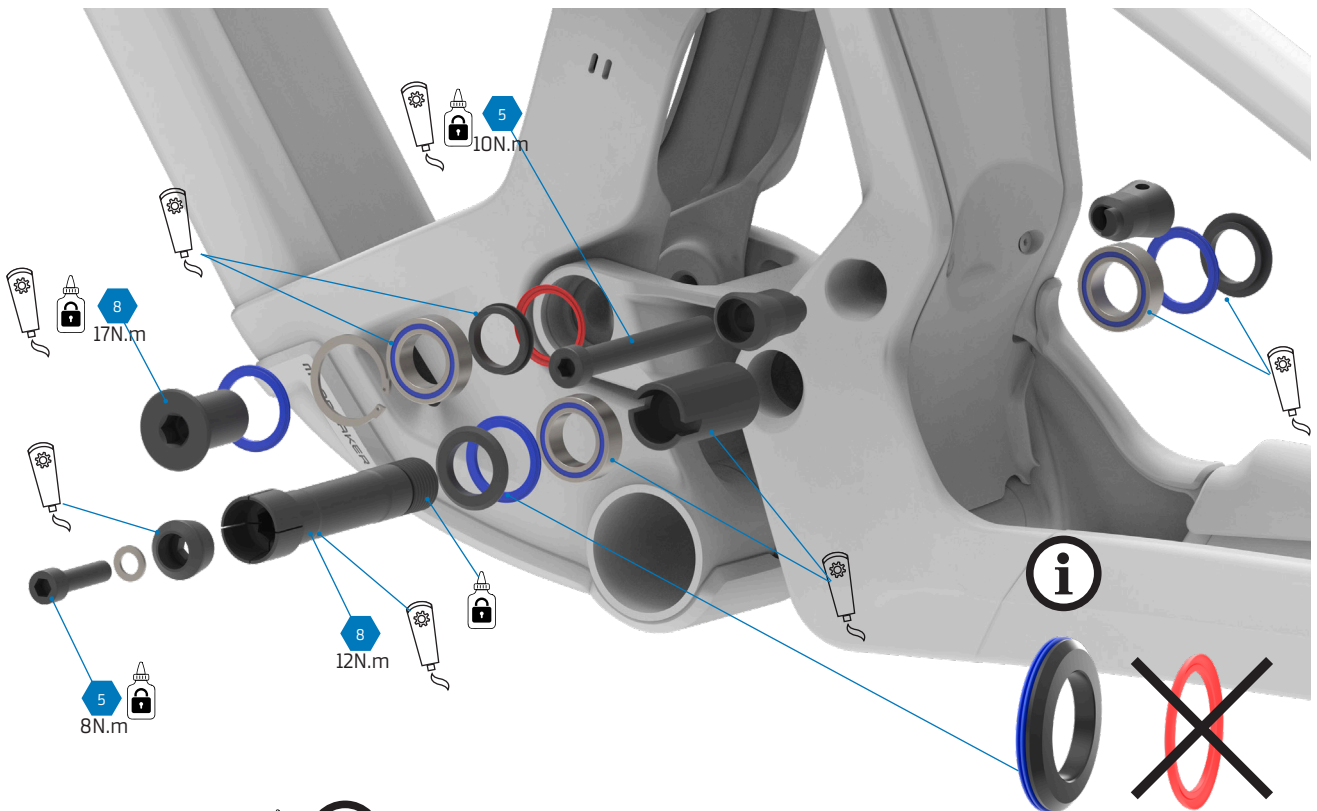


5. GUARNIZIONI IN GOMMA



Presti attenzione alla posizione e alla forma delle guarnizioni in gomma. Sono stati utilizzati i colori rosso e blu per differenziarli, ma in realtà le guarnizioni in gomma sono nere.

6. LINK INFERIORE



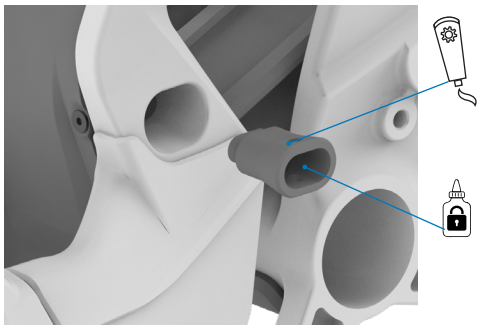
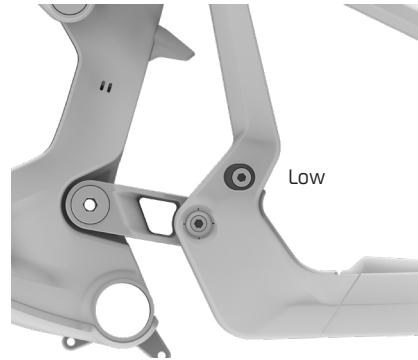
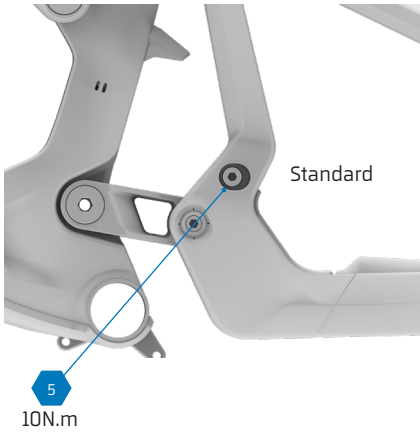
Utilizzare Loctite 243 per la filettatura.



Utilizzare grasso di montaggio per assemblare i componenti.

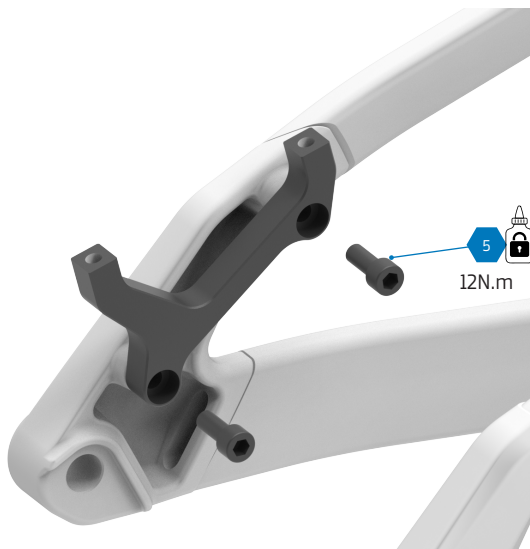


7. FLIP CHIP DEL PERNO DELL'AMMORTIZZATORE



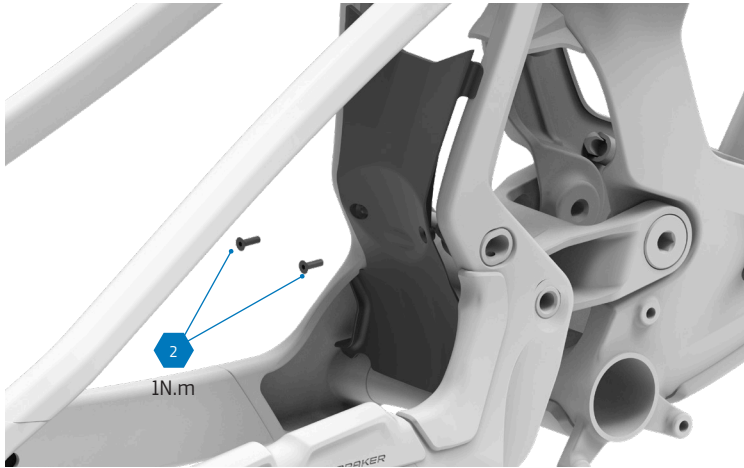
Utilizzare Loctite 243 per la filettatura e grasso di montaggio per le superfici esterne del flip chip.

8. ADATTATORE FRENO

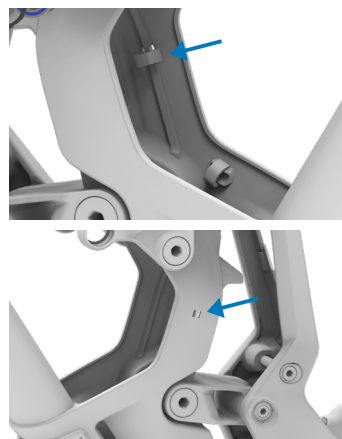
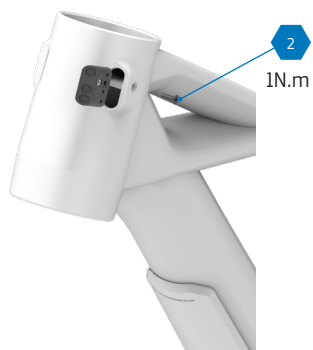




9. DEFLETTORI

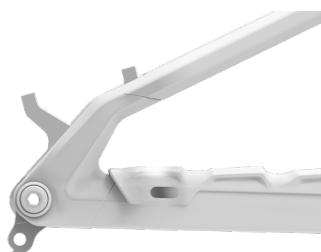


10. PASSAGGIO CAVI INTERNO



Il telaio presenta delle aperture per far passare una fascetta e fissare il cavo del reggisella telescopico.

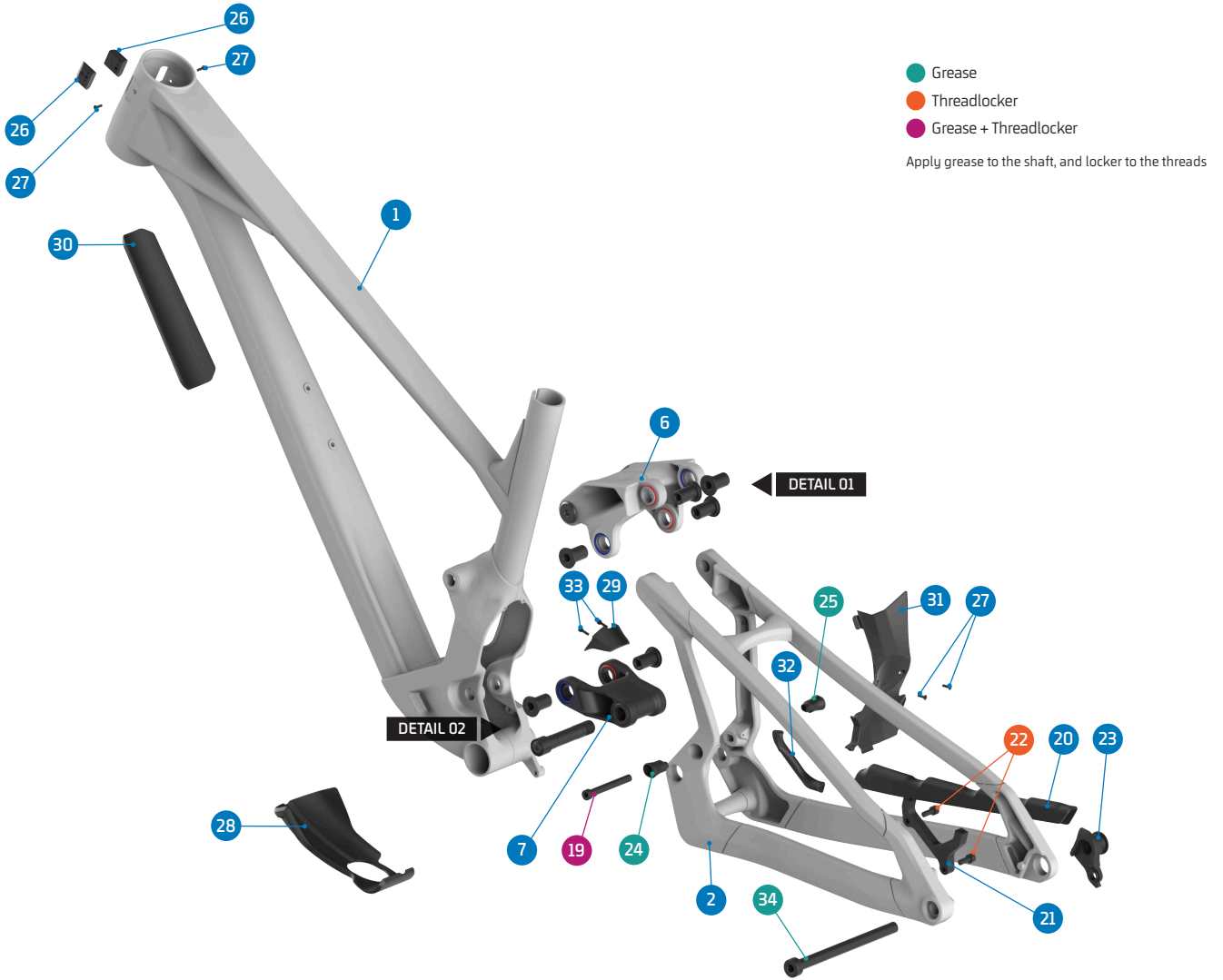
11. CAVO DEL CAMBIO



Dietro il batticatena si trova l'ingresso del cavo per il deragliatore posteriore. È possibile forare la gomma della protezione in corrispondenza del segno per far passare il cavo.



12. SPARE PARTS



ITEM No.	DESCRIPTION	QTY.	PART NUMBER	TORQUE
1	FRAME	1		
2	REAR TRIANGLE	1		
3	PIVOT AXLE, M15	6	SET 3 & 4	17Nm
4	SHOCK BOLT	2	SET 2	8Nm
5	BEARING, 24x15x7	10	SET 1 / 099.00113	
6	UPPER LINK	1	Refer to B2B web for color options	
7	LOWER LINK	1	099.26092	
8	C-RING	8	SET 2, 3 & 4	
9	SPACER, 10x17x6	2	SET 2	12Nm
10	PIVOT SEAL EXTERNAL	10	SET 2, 3, 4 & 7	
11	PIVOT SEAL INTERNAL	8	SET 2, 3, 4 & 7	
12	PIVOT WASHER	6	SET 3 & 4	
13	PIVOT AXLE, 86L	1	SET 4	8Nm
14	SPACER, 38L	1	SET 4	
15	WASHER, 6x10x1	1	SET 4	10Nm
16	TAPER NUT	1	SET 4	
17	SCREW BOLT, M6x25	1	SET 4	

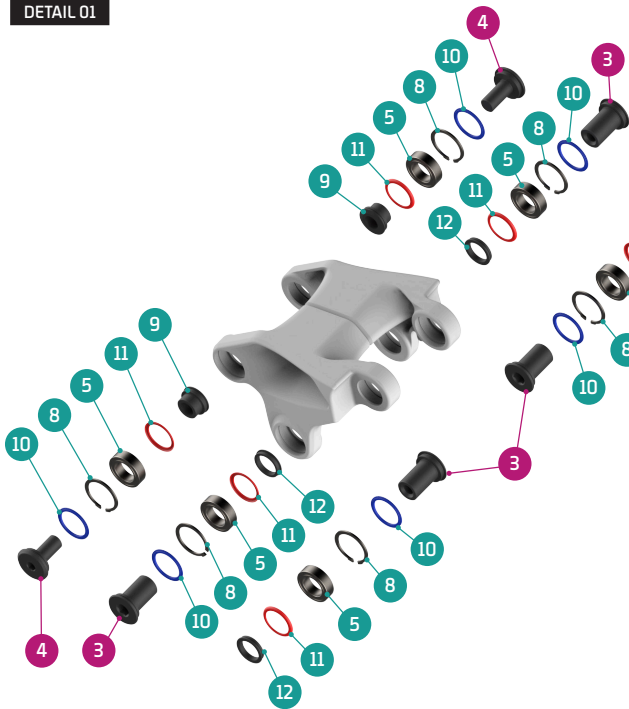
ITEM No.	DESCRIPTION	QTY.	PART NUMBER	TORQUE
18	SPACER, LOWER	2	SET 4	12Nm
19	SHOCK BOLT, 65L	1	SET 2/099.25038	
20	CHAINSTAY PROTECTOR	1	099.25016	
21	DISC MOUNT	1	SET 5	
22	SCREW BOLT, M6x15	2	SET 5	1Nm
23	HANGER	1	SRAM UDH	
24	SHOCK FLIPCHIP LEFT	1	099.26093	
25	SHOCK FLIPCHIP RIGHT	1	099.26094	
26	CABLE GUIDE HEAD SET 3 CABLES	2	SET 6	2Nm
27	SCREW BOLT, M3x10	4	SET 6	
28	BOTTOM BRACKET PROTECTOR	1	099.26095	
29	FT SHOCK FENDER	1	099.26096	
30	DOWN TUBE PROTECTOR	1	099.26080	
31	REAR TRIANGLE FENDER	1	099.26097	
32	YOKE PROTECTOR	1	099.26098	
33	SCREW BOLT, M3x10	2	099.12116	
34	REAR AXLE	1	112.90027	



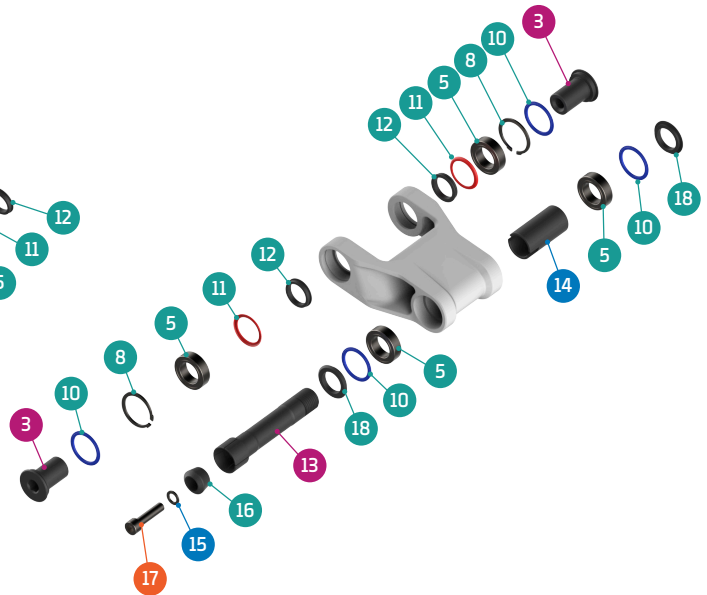
12. SPARE PARTS



DETAIL 01



DETAIL 02



SET 7

SEALS KIT



SET 6

CABLE GUIDE KIT



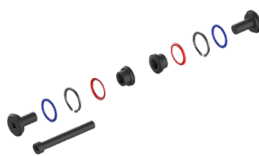
SET 1

ZERO BEARING KIT 25



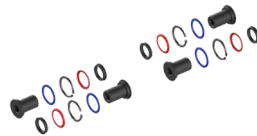
SET 2

SHOCK HARDWARE KIT 24



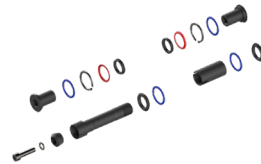
SET 3

UPPER LINK KIT 34



SET 4

LOWER LINK KIT 40



SET 5

DISC ADAPTOR KIT



PART NUMBER	DESCRIPTION	COMPONENTS
099.22100	SET 1: ZERO BEARING KIT 25	BEARING 3802-2RS, 24x15x7 (x10)
099.26202	SET 2: SHOCK HARDWARE KIT 24	PIVOT SEAL INTERNAL (x2) / PIVOT SEAL EXTERNAL (x2) / C-RING (x2) / SPACER, 10x17x6 (x2) / SHOCK BOLT (x2) / SHOCK BOLT, 65 (x1)
099.26300	SET 3: UPPER LINK KIT 34	PIVOT WASHER (x4) / PIVOT SEAL INTERNAL (x4) / PIVOT SEAL EXTERNAL (x4) / PIVOT AXLE, M15 (x4) / C-RING (x4)
099.26402	SET 4: LOWER LINK KIT 40	PIVOT WASHER (x2) / PIVOT SEAL INTERNAL (x2) / PIVOT SEAL EXTERNAL (x4) / PIVOT AXLE, M15 (x2) / C-RING (x2) / SCPACER, 38 (x1) / SCPACER LOWER (x1) / PIVOT AXLE, 86 (x1) / WASHER, 6x10x1 (x1) / TUPPER NUT (x1) / SCREW BOLT, M6x25 (x2)
099.25018	SET 5: DISC ADAPTOR KIT	DISC ADAPTOR (x1) / SCREW BOLT, M6x15 (x2)
099.25013	SET 6: CABLE GUIDE KIT	CABLE GUIDE, 3 CABLES (x1) / SCREW BOTL M2.5X5 (x1) / SCREW BOLT M3X10 (x1)
099.26062	SET 7: SEALS KIT	PIVOT SEAL INTERNAL (x8) / PIVOT SEAL EXTERNAL (x10)



13. CINEMATICA

La cinematica della Anark deriva dalla piattaforma del prototipo da competizione Summum. Questo ci permette di equipaggiarla con un sistema di sospensione di massima efficienza, la cui base è stata sviluppata e ottimizzata mediante telemetria nell'esigente ambiente delle gare.

Il leverage ratio (rapporto di leva) della Anark mostra una progressione del 25% con un ammortizzatore da 205x65 mm, ideale per l'utilizzo con ammortizzatori a molla.

L'anti-squat in zona di sag si attesta intorno al 98%, un valore ideale per una sospensione posteriore con maggiore escursione, capace, sensibile ed efficiente.

L'anti-rise in zona di sag è di circa il 99,7%, vicino al 100% per ottenere il comportamento ideale e la massima indipendenza del freno posteriore rispetto all'azione della sospensione.

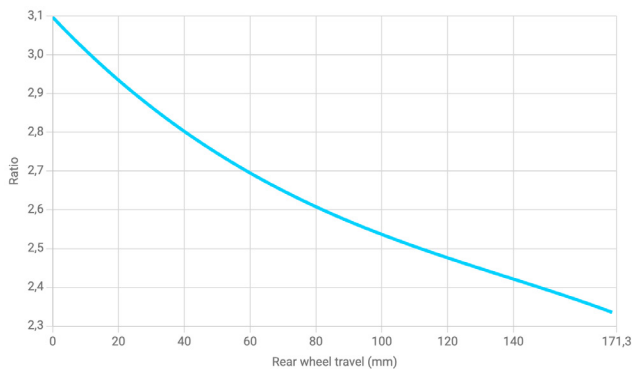
Molle consigliate per l'ammortizzatore posteriore:

RockShox
S 350 lb/in, M 400 lb/in, ML 450 lb/in, L 500 lb/in e XL 500 lb/in

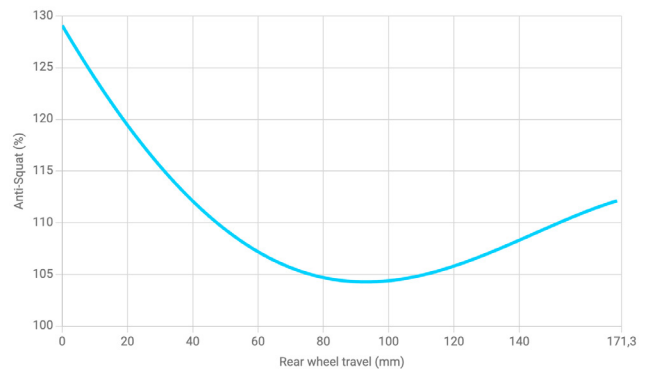
Fox
S 350 lb/in, M 400 lb/in, ML 450 lb/in, L 500 lb/in e XL 500 lb/in

Öhlins
S 343 lb/in, M 411 lb/in, ML 457 lb/in, L 502 lb/in e XL 502 lb/in

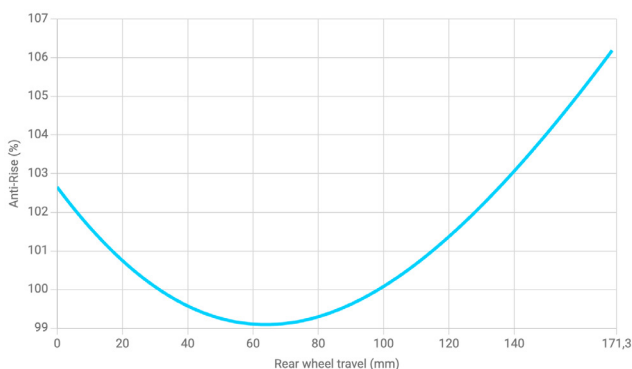
ANARK **LEVERAGE RATIO**



ANARK **ANTI-SQUAT**



ANARK **ANTI-RISE**





Tutte le informazioni e le immagini contenute in questo documento sono fornite esclusivamente a titolo informativo e non costituiscono un contratto legale tra MONDRAKER e qualsiasi persona o entità. Le specifiche, le geometrie o qualsiasi altra informazione tecnica qui pubblicata sono soggette a modifiche senza preavviso.

© ® Tutti i marchi e modelli sono di proprietà di Blue Factory team, S.L.U. e sono protetti dalle leggi vigenti e dagli accordi internazionali applicabili.

MANUALES Y DOCUMENTOS





INSTRUCCIONES GENERALES Y DE SEGURIDAD

En esta guía técnica pueden aparecer los 3 iconos siguientes. Cada uno de ellos indica que deben tomarse las siguientes precauciones:

ADVERTENCIA:

No seguir las indicaciones o usar la bicicleta de forma inadecuada puede ocasionar graves lesiones o incluso la muerte. Estas tareas entrañan dificultad técnica y, si no se realizan de forma adecuada, podrían causar daños a tu bicicleta o dar lugar a la anulación de la garantía.

CUIDADO:

No seguir las indicaciones o usar la bicicleta de forma inadecuada puede ocasionar lesiones leves. Estas tareas entrañan dificultad técnica y, si no se realizan de forma adecuada, podrían causar daños a tu bicicleta o dar lugar a la anulación de la garantía.

INFORMACIÓN

Información imprescindible para realizar esta tarea correctamente y, así, evitar que se cause cualquier daño a la bicicleta o se pierda la garantía, pero que no supone ningún riesgo para las personas.

OTRAS CONSIDERACIONES

- El uso de piezas de repuesto no originales puede ocasionar daños, fallos de funcionamiento y accidentes que pueden tener graves consecuencias.
- Para realizar algunos de los pasos descritos en este manual se requieren habilidades superiores a las del usuario medio de bicicleta. En caso de no poder seguir alguno de estos pasos, lleva tu bicicleta a un servicio técnico autorizado Mondraker para el mantenimiento y sustitución de sus componentes. La instalación incorrecta de piezas de repuesto puede ocasionar fallos de funcionamiento, accidentes, lesiones y la anulación de la garantía.

LIMPIEZA Y CUIDADO

- Una vez desmontadas las piezas, se recomienda limpiar, engrasar y poner fijador de roscas (en caso necesario) en los componentes que se vayan a reutilizar.

LEYENDA DE SÍMBOLOS



Fijador de roscas grado medio. Loctite 243.

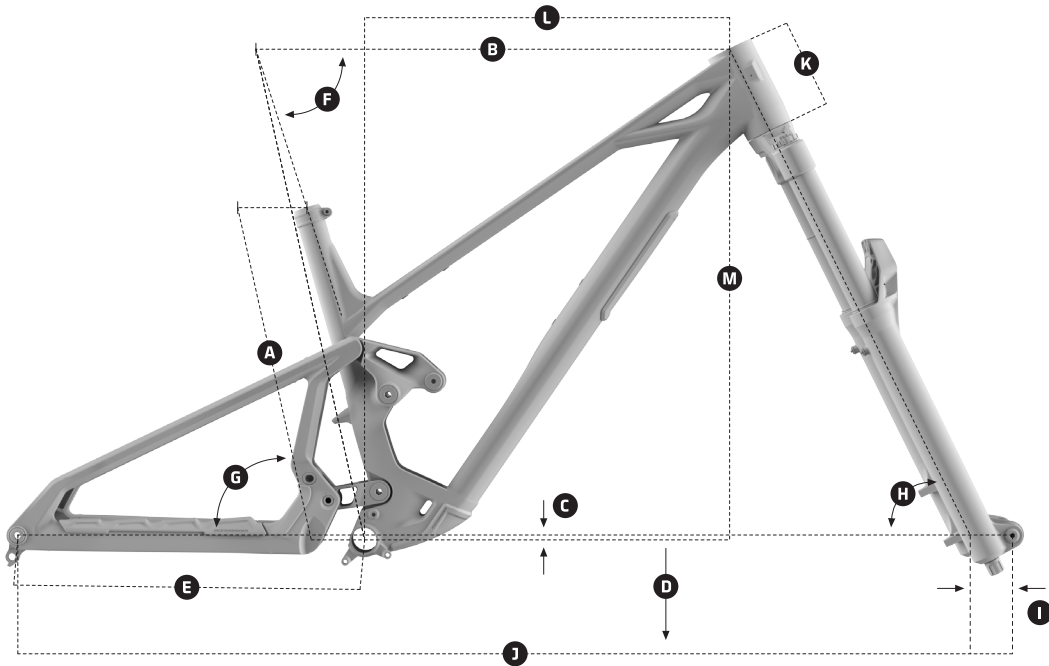


Grasa sintética de calidad para montaje.



Grasa especial de fricción para carbono.

1. GEOMETRÍA



ANARK

TALLA DE CUADRO	S [STD / LOW]	M [STD / LOW]	ML [STD / LOW]	L [STD / LOW]	XL [STD / LOW]
A Longitud tubo sillín	380 mm	410 mm	435 mm	460 mm	490 mm
B Longitud tubo superior	583 mm / 584 mm	603 mm / 604 mm	625 mm / 626 mm	647 mm / 648 mm	669 mm / 670 mm
C Caída eje pedalier	-10 mm / -15 mm	-10 mm / -15 mm	-10 mm / -15 mm	-10 mm / -15 mm	-10 mm / -15 mm
D Altura eje pedalier	346 mm / 341 mm	346 mm / 341 mm	346 mm / 341 mm	346 mm / 341 mm	346 mm / 341 mm
E Longitud vainas	445 mm / 446 mm	445 mm / 446 mm	445 mm / 446 mm	445 mm / 446 mm	445 mm / 446 mm
F Ángulo tubo sillín real	74.00° / 73.65°	74.00° / 73.65°	74.00° / 73.65°	74.00° / 73.65°	74.00° / 73.65°
G Ángulo tubo sillín efectivo	77.50° / 77.15°	77.50° / 77.15°	77.50° / 77.15°	77.50° / 77.15°	77.50° / 77.15°
H Ángulo dirección	63.50° / 63.15°	63.50° / 63.15°	63.50° / 63.15°	63.50° / 63.15°	63.50° / 63.15°
I Offset de la horquilla	44 mm / 44 mm	44 mm / 44 mm	44 mm / 44 mm	44 mm / 44 mm	44 mm / 44 mm
J Distancia entre ejes	1241 mm	1261 mm	1285 mm	1310 mm	1334 mm
K Longitud pipa	110 mm	110 mm	110 mm	110 mm	110 mm
L Reach	440 mm / 436 mm	460 mm / 456 mm	480 mm / 476 mm	500 mm / 496 mm	520 mm / 516 mm
M Stack	644 mm / 647 mm	644 mm / 647 mm	653 mm / 656 mm	662 mm / 665 mm	671 mm / 674 mm

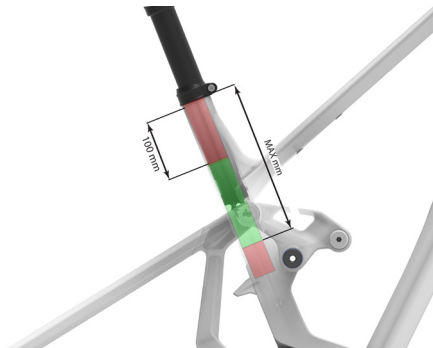
SHOCK FLIP CHIP +/-5mm altura pedalier, 0,35° dirección



2. ESPECIFICACIONES TÉCNICAS DEL CUADRO

TALLAS DE CUADRO	S / M / ML / L / XL
TAMAÑO RUEDA DELANTERA	29"
BUJE DELANTERO	110 mm x 15 mm (BOOST)
TAMAÑO RUEDA TRASERA	27,5"
BUJE TRASERO	148 mm x 12 mm
EJE TRASERO	REAR AXLE, 12x148 P1.0 L180
EJE PEDALIER	BSA 73 mm
RECORRIDO TRASERO	170 mm
AMORTIGUADOR TRASERO	205 x 65 mm TRUNNION, 30 x 8 mm
RECORRIDO DE HORQUILLA	180 mm
DIÁMETRO DE TIJA	31.6 mm / 36.9 mm
LÍNEA DE CADENA	55 mm
DIRECCIÓN	Onoff custom ZS56/ZS56, 1-1/8", 1.2"
TAMAÑO MÁXIMO DE PLATO	32T
FRENO TRASERO	POST MOUNT CUSTOM ADAPTER, DIRECT 200
TAMAÑO MÁXIMO DE RUEDA	27'5 x 2.5

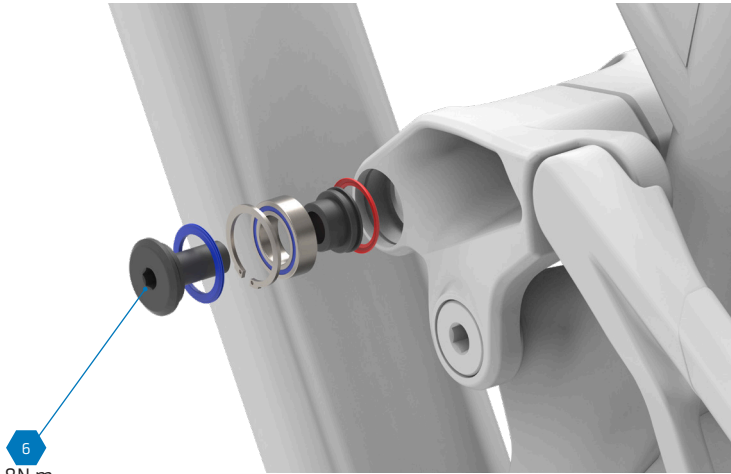
3. LONGITUD DE INSERCIÓN DE TIJA



TALLA CUADRO	MIN. (mm)	MAX. (mm)
XL	100	190
L	100	210
ML	100	230
M	100	260
S	100	280



4. BIELETA SUPERIOR

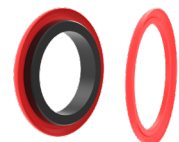
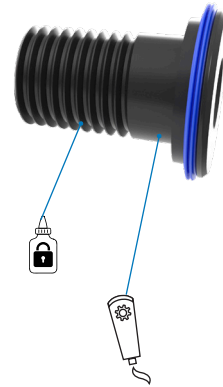
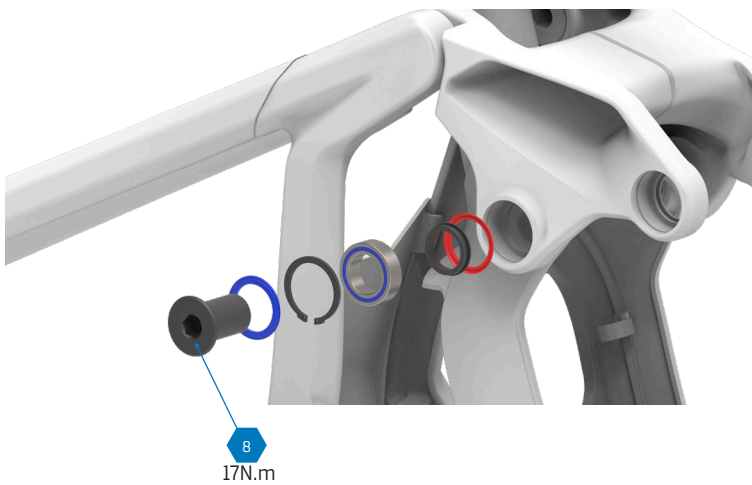


Utilice Loctite 243.

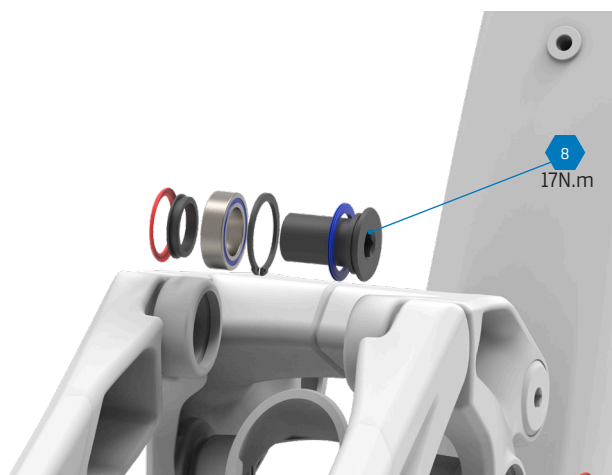
Consejo para Pro: en vez de poner el fijador de roscas en el tornillo, puedes ponerlo en la rosca hembra del cuadro de la bicicleta. Así evitas contaminar con fijador el resto de componentes al insertar el tornillo.



Utilice grasa de montaje para ensamblar las piezas.

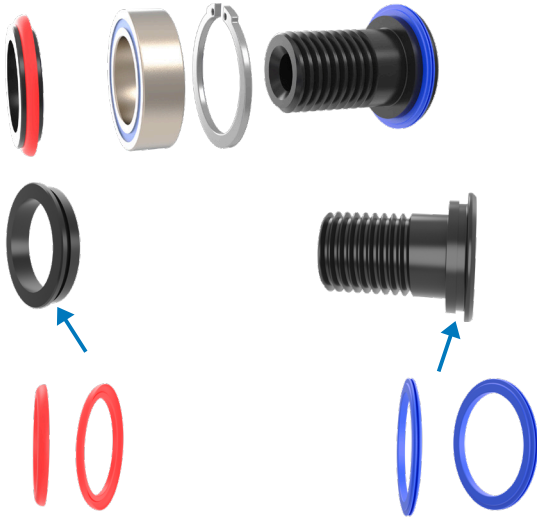


Más información: Revisa apartado "8. Sellos de Goma" de esta guía.



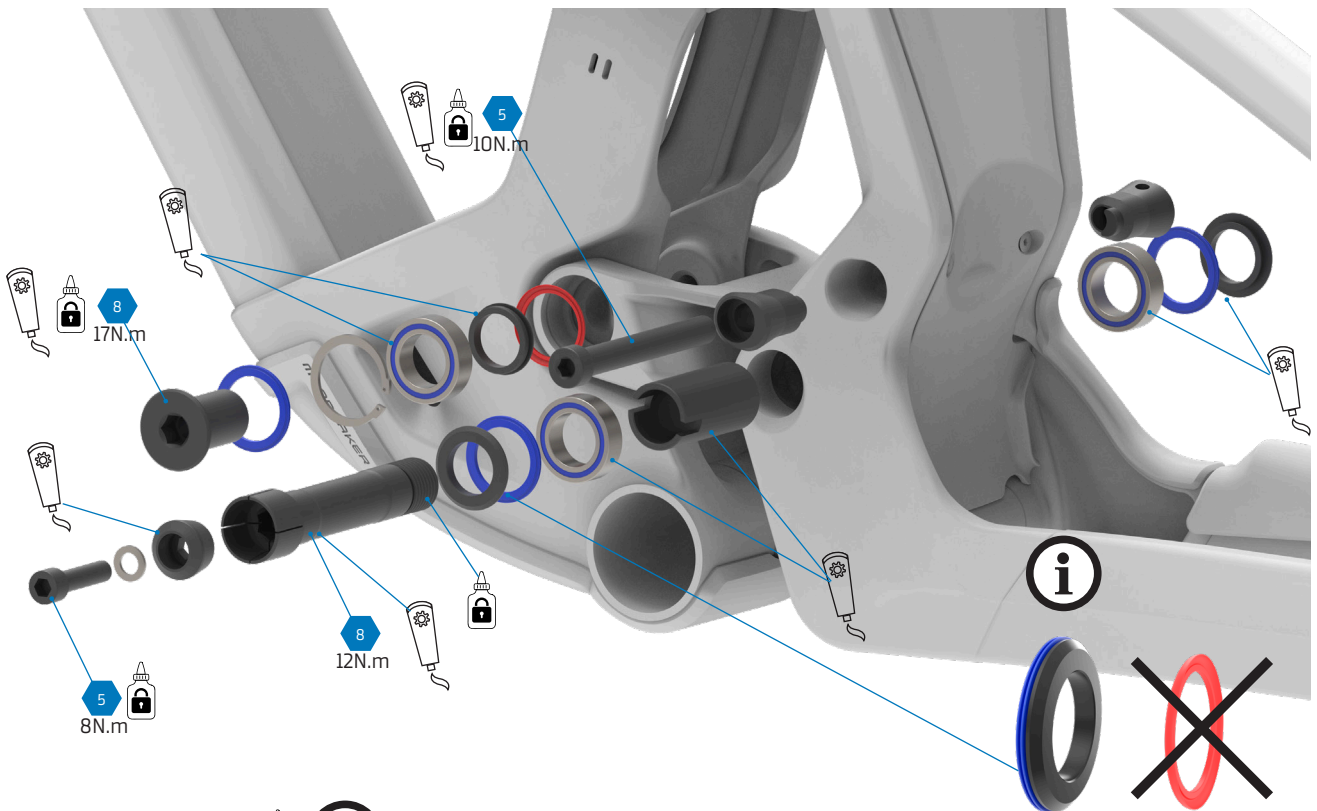


5. SELLOS DE GOMA





Preste atención a la posición y forma de los sellos de goma. Se han utilizado colores rojo y azul para diferenciarlos pero en realidad, los sellos son de goma de color negro.

6. BIELETA INFERIOR

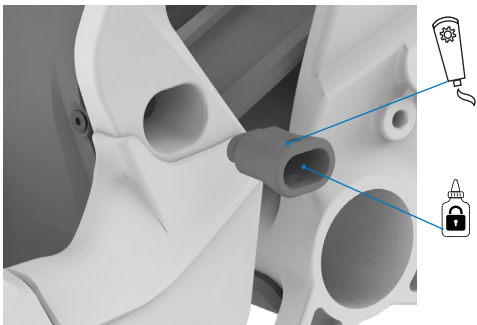
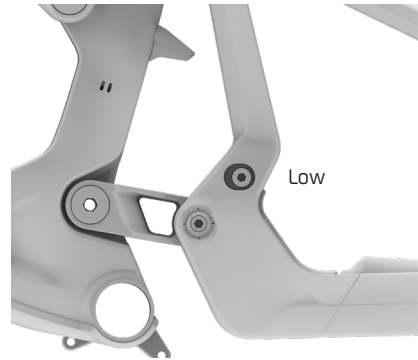
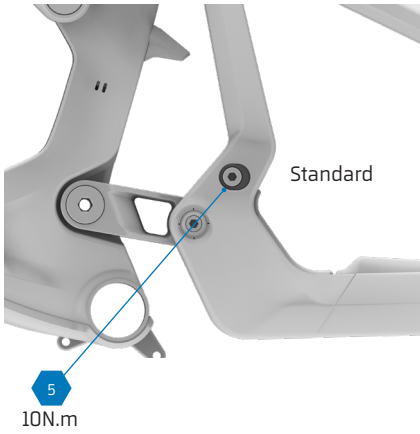


  Utilice Loctite 243.

  Utilice grasa de montaje para ensamblar las piezas.

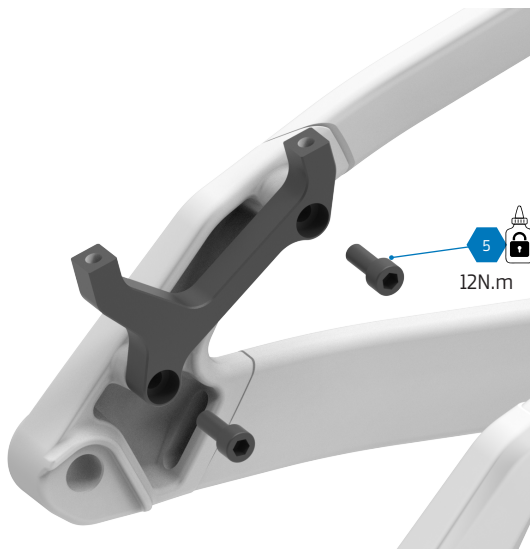


7. FLIP CHIP DEL TORNILLO DEL AMORTIGUADOR



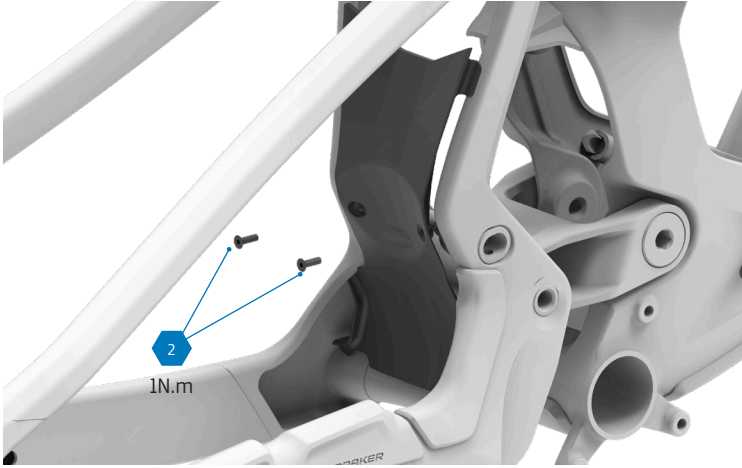
Utilice Loctite 243 para la rosca y grasa de montaje para las zonas externas del flip chip.

8. ADAPTADOR DEL FRENO

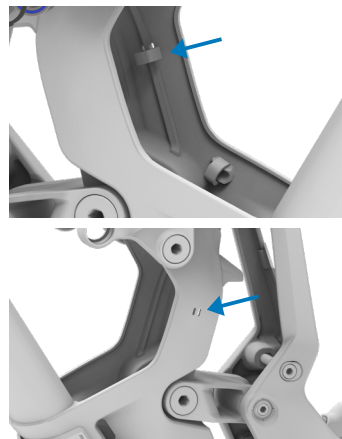
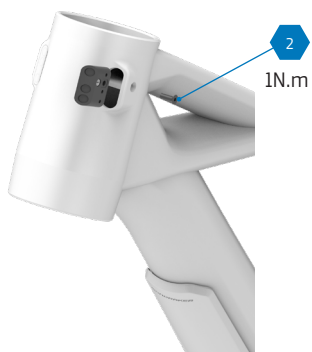




9. PROTECTORES

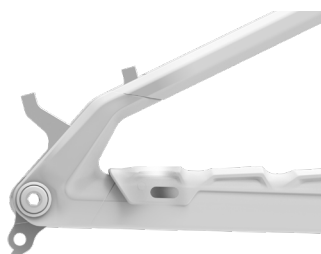


10. CABLEADO INTERNO



El cuadro tiene unas aperturas para pasar una brida y sujetar el cable de la tija telescópica.

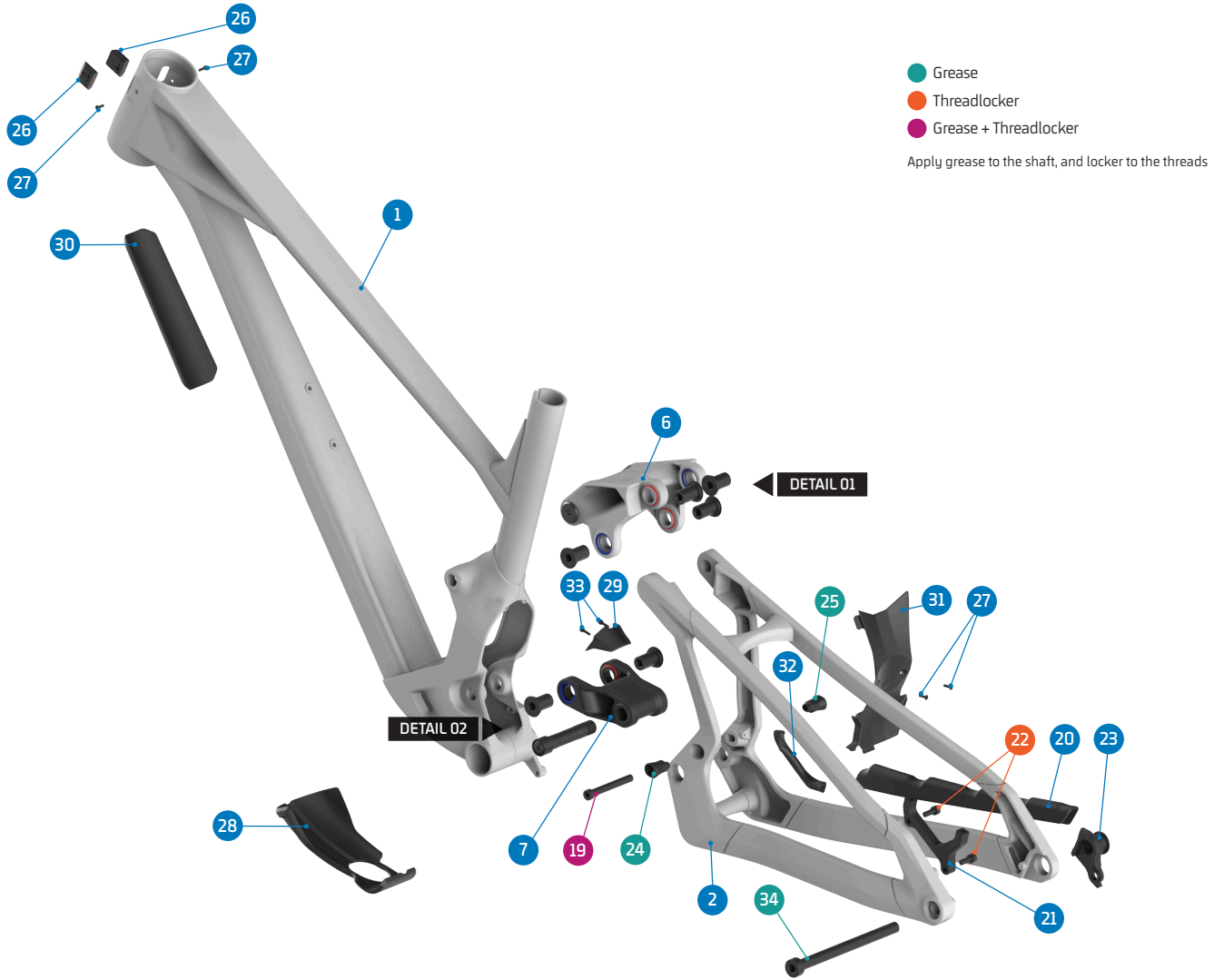
11. CABLE DEL CAMBIO



Behind the chainstay protector is the cable entry for the rear derailleurs. The rubber of the protector can be pierced at the mark to route the cable.



12. SPARE PARTS



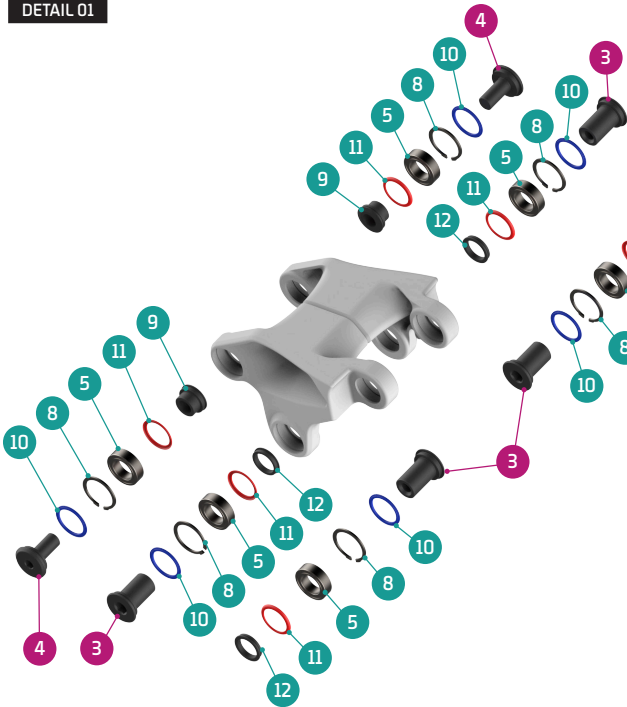
ITEM No.	DESCRIPTION	QTY.	PART NUMBER	TORQUE
1	FRAME	1		
2	REAR TRIANGLE	1		
3	PIVOT AXLE, M15	6	SET 3 & 4	17Nm
4	SHOCK BOLT	2	SET 2	8Nm
5	BEARING, 24x15x7	10	SET 1 / 099.00113	
6	UPPER LINK	1	Refer to B2B web for color options	
7	LOWER LINK	1	099.26092	
8	C-RING	8	SET 2, 3 & 4	
9	SPACER, 10x17x6	2	SET 2	12Nm
10	PIVOT SEAL EXTERNAL	10	SET 2, 3, 4 & 7	
11	PIVOT SEAL INTERNAL	8	SET 2, 3, 4 & 7	
12	PIVOT WASHER	6	SET 3 & 4	
13	PIVOT AXLE, 86L	1	SET 4	8Nm
14	SPACER, 38L	1	SET 4	
15	WASHER, 6x10x1	1	SET 4	10Nm
16	TAPER NUT	1	SET 4	
17	SCREW BOLT, M6x25	1	SET 4	

ITEM No.	DESCRIPTION	QTY.	PART NUMBER	TORQUE
18	SPACER, LOWER	2	SET 4	12Nm
19	SHOCK BOLT, 65L	1	SET 2/099.25038	
20	CHAINSTAY PROTECTOR	1	099.25016	
21	DISC MOUNT	1	SET 5	
22	SCREW BOLT, M6x15	2	SET 5	1Nm
23	HANGER	1	SRAM UDH	
24	SHOCK FLIPCHIP LEFT	1	099.26093	
25	SHOCK FLIPCHIP RIGHT	1	099.26094	
26	CABLE GUIDE HEAD SET 3 CABLES	2	SET 6	2Nm
27	SCREW BOLT, M3x10	4	SET 6	
28	BOTTOM BRACKET PROTECTOR	1	099.26095	
29	FT SHOCK FENDER	1	099.26096	
30	DOWN TUBE PROTECTOR	1	099.26080	
31	REAR TRIANGLE FENDER	1	099.26097	
32	YOKE PROTECTOR	1	099.26098	
33	SCREW BOLT, M3x10	2	099.12116	
34	REAR AXLE	1	112.90027	

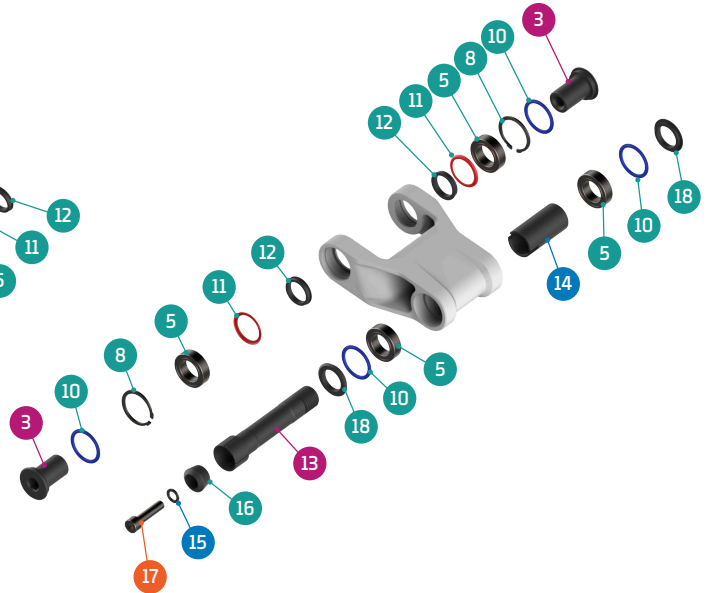


12. SPARE PARTS

DETAIL 01



DETAIL 02



SET 7

SEALS KIT



SET 6

CABLE GUIDE KIT



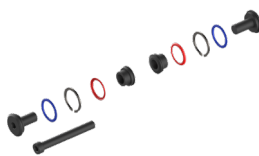
SET 1

ZERO BEARING KIT 25



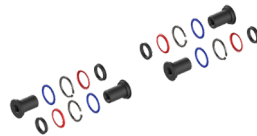
SET 2

SHOCK HARDWARE KIT 24



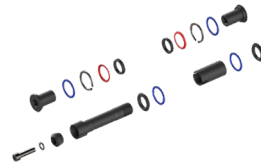
SET 3

UPPER LINK KIT 34



SET 4

LOWER LINK KIT 40



SET 5

DISC ADAPTOR KIT



PART NUMBER	DESCRIPTION	COMPONENTS
099.22100	SET 1: ZERO BEARING KIT 25	BEARING 3802-2RS, 24x15x7 (x10)
099.26202	SET 2: SHOCK HARDWARE KIT 24	PIVOT SEAL INTERNAL (x2) / PIVOT SEAL EXTERNAL (x2) / C-RING (x2) / SPACER, 10x17x6 (x2) / SHOCK BOLT (x2) / SHOCK BOLT, 65 (x1)
099.26300	SET 3: UPPER LINK KIT 34	PIVOT WASHER (x4) / PIVOT SEAL INTERNAL (x4) / PIVOT SEAL EXTERNAL (x4) / PIVOT AXLE, M15 (x4) / C-RING (x4)
099.26402	SET 4: LOWER LINK KIT 40	PIVOT WASHER (x2) / PIVOT SEAL INTERNAL (x2) / PIVOT SEAL EXTERNAL (x4) / PIVOT AXLE, M15 (x2) / C-RING (x2) / SCPACER, 38 (x1) / SCPACER LOWER (x1) / PIVOT AXLE, 86 (x1) / WASHER, 6x10x1 (x1) / TUPPER NUT (x1) / SCREW BOLT, M6x25 (x2)
099.25018	SET 5: DISC ADAPTOR KIT	DISC ADAPTOR (x1) / SCREW BOLT, M6x15 (x2)
099.25013	SET 6: CABLE GUIDE KIT	CABLE GUIDE, 3 CABLES (x1) / SCREW BOTL M2.5X5 (x1) / SCREW BOLT M3X10 (x1)
099.26062	SET 7: SEALS KIT	PIVOT SEAL INTERNAL (x8) / PIVOT SEAL EXTERNAL (x10)



13. CINEMÁTICA

La cinemática de la Anark deriva de la plataforma del prototipo Summum de competición. Esto nos permite equiparla con un sistema de suspensión de máxima eficiencia, cuya base fue desarrollada y optimizada mediante telemetría en el exigente entorno de las carreras.

El leverage ratio (relación de palanca) de la Anark muestra una progresividad del 25 % con un amortiguador de 205x65 mm, ideal para el uso de amortiguadores traseros de muelle.

El anti-squat en el punto de sag se sitúa en torno al 98 %, una cifra ideal para una suspensión trasera de mayor recorrido, capaz, absorbente y eficiente.

El anti-rise en el punto de sag es de aproximadamente el 99,7 %, un valor cercano al 100 % para lograr el comportamiento ideal y la máxima independencia del freno trasero respecto al funcionamiento de la suspensión.

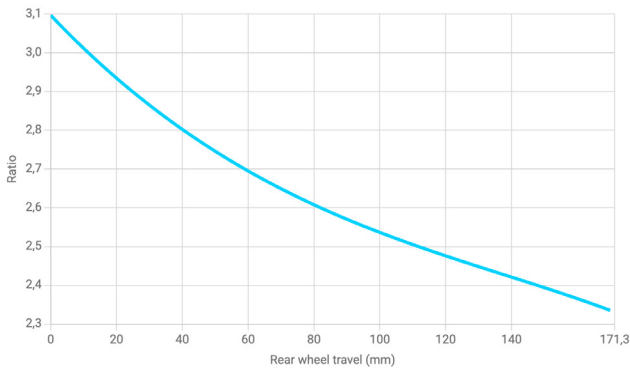
Muelles recomendados para el amortiguador trasero:

RockShox
S 350 lb/in, M 400 lb/in, ML 450 lb/in, L 500 lb/in y XL 500 lb/in

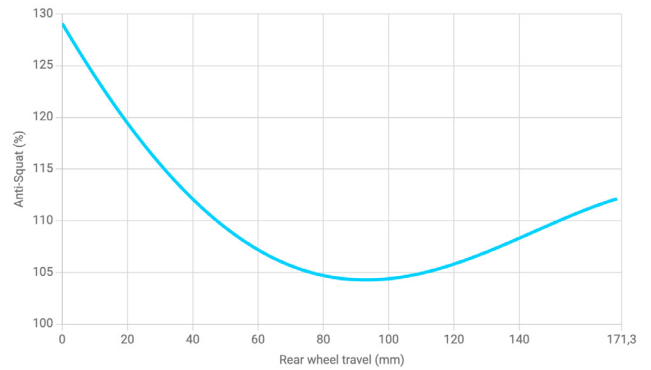
Fox
S 350 lb/in, M 400 lb/in, ML 450 lb/in, L 500 lb/in y XL 500 lb/in

Öhlins
S 343 lb/in, M 411 lb/in, ML 457 lb/in, L 502 lb/in y XL 502 lb/in

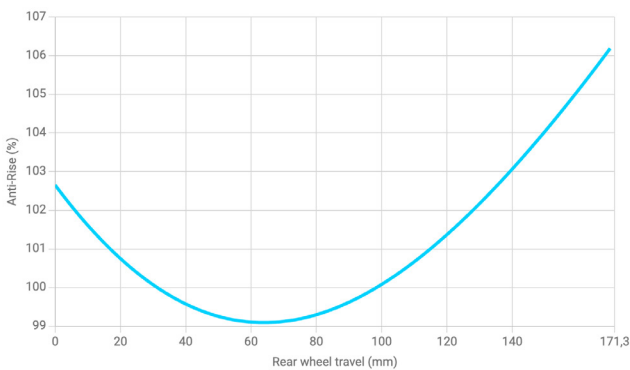
ANARK **LEVERAGE RATIO**



ANARK **ANTI-SQUAT**



ANARK **ANTI-RISE**





Toda la información e imágenes que contiene este documento se proporcionan, únicamente, a título informativo y no constituyen un contrato legal entre Mondraker y ninguna persona ni entidad. Las especificaciones, geometrías o cualquier otra información técnica aquí publicada están sujetas a cambios sin necesidad de previo aviso.

© © Todas las marcas y modelos son propiedad de Blue Factory Team, S.L.U. y cuentan con la protección de las leyes vigentes y los acuerdos internacionales de aplicación.