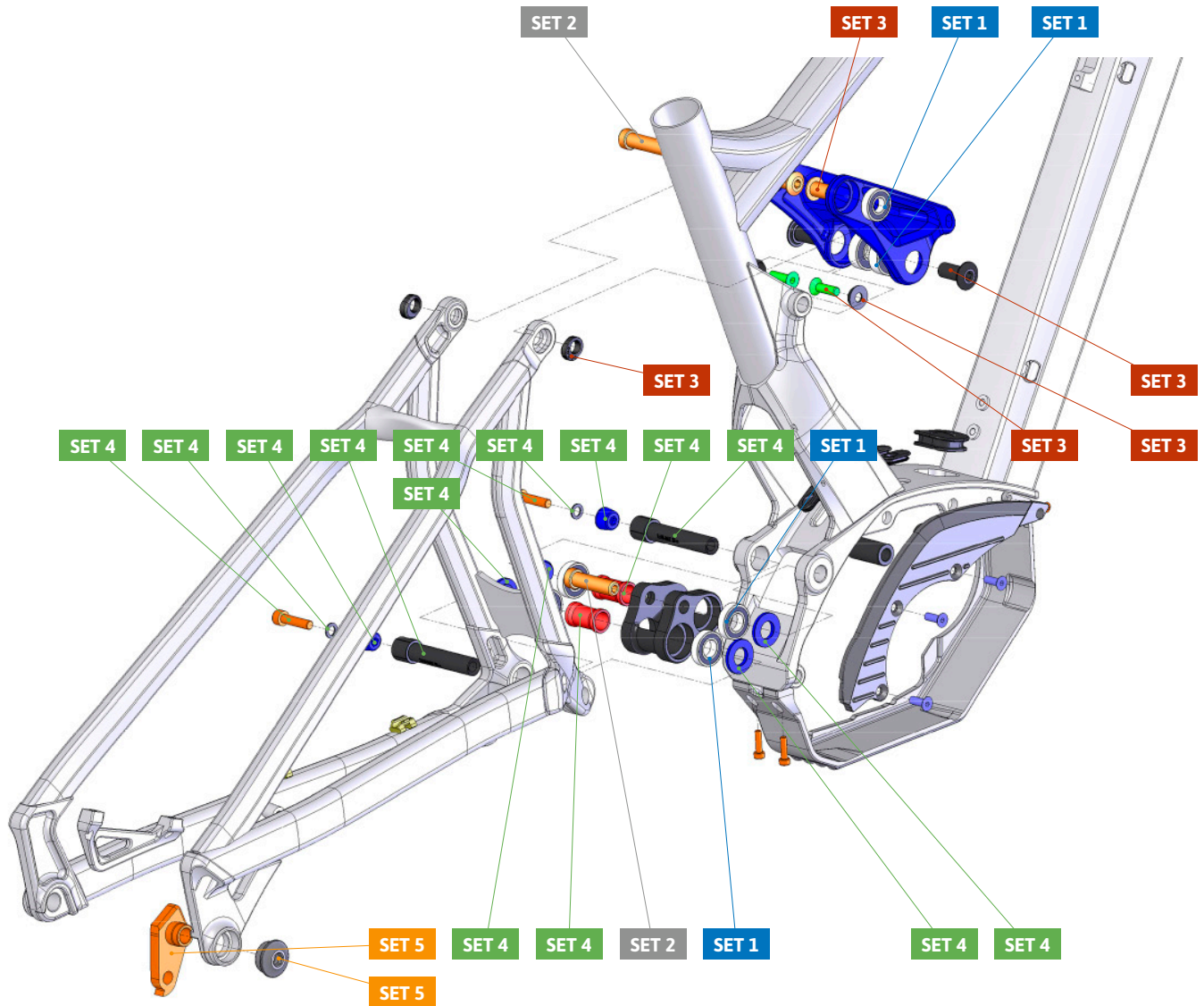


● Grease
● Sealant
● Grease + Sealant
 Apply grease to the shaft,
 and sealant to the threads

ITEM No.	DESCRIPTION	QTY.	PART NUMBER	TORQUE
1	LOWER LINK	1		
2	UPPER LINK, LEFT	1		
3	UPPER LINK, RIGHT	1		
4	BEARING, 6901v-2RS	4	SET 1	
5	SPACER, 27mm	2	SET 4	
6	SPACER, 3mm	4	SET 4	
7	PIVOT AXLE, 70.5mm	2	SET 4	8Nm
8	TAPER NUT	2	SET 4	
9	SPACER	2	SET 4	
10	SCREW BOLT M6X25	2	SET 4	10Nm
11	BEARING, 6000-RS	2	SET 1	
12	BEARING, 6900-RS	2	SET 1	
13	PIVOT AXLE	2	SET 3	5Nm
14	AXLE NUT	2	SET 3	

ITEM No.	DESCRIPTION	QTY.	PART NUMBER	TORQUE
15	SLEEVE BOLT	2	099.12104	8Nm
16	HANGER M067	1	SET 5	
17	HANGER NUT	1	SET 5	4Nm
18	MOTOR COVER	1	099.16013	
19	SCREW BOLT M4X10	2		3Nm
20	SCREW BOLT	2		4Nm
21	LINK AXLE	2	SET 3	10Nm
22	BEARING CAP	2	SET 3	
23	SCREW BOLT	2	SET 3	
24	CABLE RUBBER	1	989.13010	
25	SPACER	4		
26	CABLE COVER	2	099.16014	
27	RIGHT SIDE COVER	1	099.16017	
28	SCREW BOLT	3		3Nm



PART NUMBER	DESCRIPTION	COMPONENTS
099.16111	SET 1: ZERO BEARING KIT 12	BEARING 6900-RS (INT. 10mm. EXT 22mm) (x2) / BEARING 6000-2RS (INT. 10mm. EXT 26mm) (x2) / BEARING 6901V-2RS (INT. 12mm. EXT 24mm) (x4)
099.12002	SET 2: SHOCK HARDWARE ZERO 1	BOLT M10x36 (x2)
099.16112	SET 3: UPPER LINK KIT 18	PIVOT AXLE M10x15 (x2) / AXLE NUT M10x5,75 (x2) / LINK AXLE (x2) / BEARING CAP (x2) / M6x20L-M SCREW BOLT (x2)
099.16113	SET 4: LOWER LINK KIT 18	SPACER D16xD12x27 (x2) / SPACER D23.5xD12x3mm (x4) / PIVOT AXLE M12X70.5mm (x2) / SPACER D10XD6X1mm (x2) / TAPER NUT 10.5mm (x2) M6x25L-P-S SCREW BOLT (x2)
099.00054	SET 5: HANGER M067 + NUT	HANGER M067 (x1) / HANGER NUT (x1)