

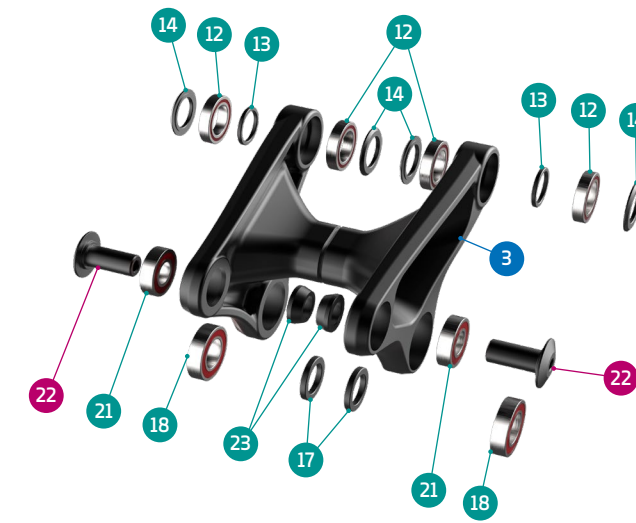
- Grease
- Threadlocker
- Grease + Threadlocker

Apply grease to the shaft, and locker to the threads

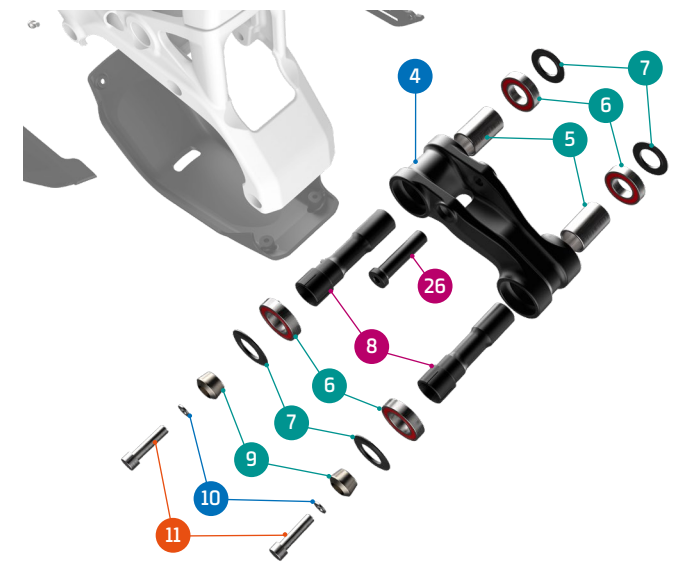
ITEM No.	DESCRIPTION	QTY.	PART NUMBER	TORQUE
1	FRONT TRIANGLE	1		
2	REAR TRIANGLE	1		
3	UPPER LINK	1	099.20039	
4	LOWER LINK	1	099.20040	
5	SPACER, 17x22x30L	2	SET 4	
6	BEARING, 30x17x7	4	SET 1	
7	SPACER, 15x27x2	4	SET 4	
8	MAIN PIVOT AXLE, 17X60	2	SET 4	12Nm
9	TAPER NUT	2	SET 4	
10	SPACER	2	SET 4	
11	SCREW BOLT	2	SET 4	10Nm
12	BEARING, 24X15X5	4	SET 1	
13	SPACER, 15x19x2t	2	SET 3	
14	SPACER, 15x24x2	4	SET 3	
15	PIVOT AXLE, 26MM	2	SET 3	
16	PIVOT AXLE, M12	2	SET 3	12Nm
17	SPACER, 15x22x3	2	SET 3	
18	BEARING, 28x15x7	2	SET 1	
19	M8 THREAD AXLE	1	SET 3	
20	LINK AXLE	2	SET 3	11Nm
21	BEARING, 10x22x6	2	SET 1	

ITEM No.	DESCRIPTION	QTY.	PART NUMBER	TORQUE
22	SHOCK BOLT	2	SET 2	8Nm
23	SPACER, 10x17x6	2	SET 2	
24	HANGER	1	SET 5	
25	HANGER NUT	1	SET 5	4Nm
26	SHOCK BOLT	1	SET 2	16Nm
27	CABLE RUBBER	1	989.13010	
28	LOWER MOTOR COVER	2	099.20028	
29	BATTERY BRACKET	2	SET 7	
30	BATTERY BRACKET	2	SET 7	
31	CABLE GUIDE	2	SET 6	
32	SCREW BOLT M3x8	2	SET 6	3Nm
33	RUBBER COVER	1	099.20030	
34	MOTOR BOLTS T40x18	4	099.20031	40Nm
35	SCREW BOLT M5x20	4	SET 7	5Nm
36	SCREW BOLT M4x10	4	099.15032	4Nm
37	MOTOR SPACER	2	099.20032	
38	MOTOR BOLTS T40x36	2	099.20033	40Nm
39	MOTOR COVER BOLT	1	099.20034	
40	LEFT MOTOR COVER	1	099.20028L	
41	RIGHT MOTOR COVER	1	099.20028R	

DETAIL 01



DETAIL 02



SET 1	SET 2	SET 3	SET 4	SET 5
ZERO BEARING KIT 20	SHOCK HARDWARE KIT 13	UPPER LINK KIT 26	LOWER LINK KIT 24	HANGER M068 + NUT

PART NUMBER	DESCRIPTION	COMPONENTS
099.20101	SET 1: ZERO BEARING KIT 20	BEARING 6903V-2RS, 30x17x7 (x4) / BEARING 6802V-2RS, 24x15x5 (x4) / BEARING 6902V-2RS, 28x15x7 (x2) / BEARING 6900V-2RS, 10x22x6 (x2)
099.20201	SET 2: SHOCK HARDWARE KIT 13	SHOCK BOLT (x2) / SPACER, 10x17x6 (x2) / SHOCK BOLT (x1)
099.20301	SET 3: UPPER LINK KIT 26	SPACER, 15x19x2t (x2) / SPACER, 15x24x2 (x4) / M8 THREAD AXLE (x1) / LINK AXLE (x2) / PIVOT AXLE, 26MM (x2) / PIVOT AXLE, M12 (x2) / SPACER, 15x22x3 (x2)
099.20401	SET 4: LOWER LINK KIT 24	TAPER NUT (x2) / SPACER (x2) / SCREW BOLT (x2) / SPACER, 15x27x2 (x4) / MAIN PIVOT AXLE, 17X60 (x2) / SPACER, 17x22x30L (x2)
099.00055	SET 5: HANGER M068 + NUT	HANGER (x1), HANGER NUT (x1)
099.19010	SET 6: CABLE GUIDE KIT 3	CABLE GUIDE (x1) / SCREW BOLT (x1)
099.20029	SET 7: BATTERY BRACKET KIT 1	BATTERY BRACKET (x1) / BATTERY BRACKET (x1) / SCREW BOLT (x2)
112.90022	REAR AXLE	12X148 P1.75 L180
099.20017	CHAINSTAY PROTECTOR	
124.20401	ROTOR MAGNET SPEED SENSOR SHIMANO	
099.20056	YOKE PROTECTOR	
099.20086	SPONGE MOTOR PROTECTOR	
099.20064	THREADED RUBBER PIN	
099.20066	CHARGING PORT RUBBER BAND	
099.20065	CHARGING PORT COVER	
124.20218	BATTERY RUBBER PLUG COVER	
099.21012	LOWER SHOCK BOLT - STEEL	
099.20072	CHAINGUIDE	
099.21015	CHAINGUIDE SPACER	
124.20217	EXTERNAL BATTERY KIT 360WH	