

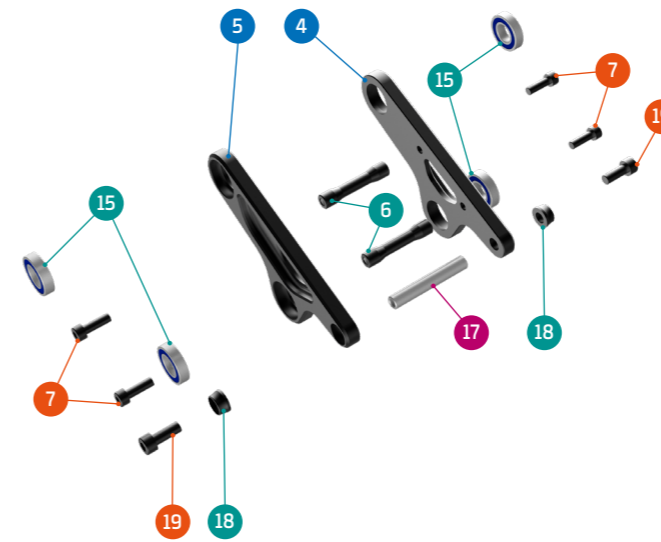
- Grease
- Threadlocker
- Grease + Threadlocker

Apply grease to the shaft, and locker to the threads

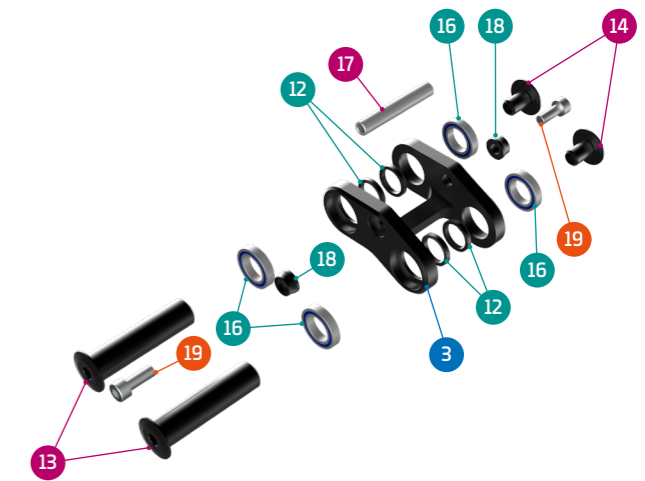
| ITEM No. | DESCRIPTION        | QTY. | PART NUMBER | TORQUE |
|----------|--------------------|------|-------------|--------|
| 1        | FRONT TRIANGLE     | 1    |             |        |
| 2        | REAR TRIANGLE      | 1    |             |        |
| 3        | LOWER LINK         | 1    | 099.21037   |        |
| 4        | LEFT UPPER LINK    | 1    | 099.21035   |        |
| 5        | RIGHT UPPER LINK   | 1    | 099.21036   |        |
| 6        | SPACER             | 2    | SET 3       |        |
| 7        | SCREW BOLT M5X16MM | 4    | SET 3       | 6Nm    |
| 8        | NUT                | 2    | SET 3       |        |
| 9        | PIVOT AXLE M12     | 2    | SET 3       | 12Nm   |
| 10       | SHOCK BOLT         | 2    | SET 3       | 12Nm   |
| 11       | SPACER             | 2    | SET 3       |        |

| ITEM No. | DESCRIPTION      | QTY. | PART NUMBER | TORQUE |
|----------|------------------|------|-------------|--------|
| 12       | SPACER           | 4    | SET 4       |        |
| 13       | MAIN AXLE 15X60  | 2    | SET 4       | 12Nm   |
| 14       | SCREW BOLT M10   | 2    | SET 4       | 12Nm   |
| 15       | BEARING, 28X12X7 | 4    | SET 1       |        |
| 16       | BEARING, 24X15X5 | 4    | SET 1       |        |
| 17       | SHOCK AXLE       | 2    | SET 2       |        |
| 18       | SPACER           | 4    | SET 2       |        |
| 19       | SHOCK BOLT       | 4    | SET 2       | 8Nm    |
| 20       | CABLE RUBBER     | 2    | 099.21022   |        |
| 21       | HANGER           | 1    | SET 5       |        |
| 22       | HANGER BOLT      | 1    | SET 5       | 3Nm    |

DETAIL 01



DETAIL 02



| SET 1               | SET 2                 | SET 3             | SET 4             | SET 5       |
|---------------------|-----------------------|-------------------|-------------------|-------------|
| ZERO BEARING KIT 24 | SHOCK HARDWARE KIT 15 | UPPER LINK KIT 29 | LOWER LINK KIT 27 | HANGER M073 |
|                     |                       |                   |                   |             |

| PART NUMBER | DESCRIPTION                  | COMPONENTS  |
|-------------|------------------------------|---|
| 099.21101   | SET 1: ZERO BEARING KIT 24   | BEARING 6901V-2RS, 28X12X7 (x4) / BEARING 6802V-2RS, 24X15X5 (x4)                                     |
| 099.21201   | SET 2: SHOCK HARDWARE KIT 15 | SHOCK AXLE (x2) / SPACER (x4) / SHOCK BOLT (x4)   |
| 099.21301   | SET 3: UPPER LINK KIT        | SPACER (x2) / SCREW BOLT M5X16MM (x4) / NUT (x2) / PIVOT AXLE M12 (x2) / BOLT AXLE (x2) / SPACER (x2) |
| 099.21401   | SET 4: LOWER LINK KIT        | SPACER (x4) / MAIN AXLE 15X60 (x2) / SCREW BOLT M10 (x2)  |
| 099.00061   | SET 5: HANGER M073           | HANGER (x1) / HANGER BOLT (x1)  |